

## Product datasheet

# Anti-TMEM2 antibody ab272644

6 Images

### Overview

<b>Product name</b>	Anti-TMEM2 antibody
<b>Description</b>	Rabbit polyclonal to TMEM2
<b>Host species</b>	Rabbit
<b>Tested applications</b>	<b>Suitable for:</b> ICC/IF, WB, IHC-P
<b>Species reactivity</b>	<b>Reacts with:</b> Human
<b>Immunogen</b>	Recombinant fragment corresponding to Human TMEM2 aa 1-100. Database link: <a href="#">Q9UHN6</a> <a href="#">Run BLAST with</a> <a href="#">Run BLAST with</a>
<b>Positive control</b>	WB: A549 cells. IHC-P: Human placenta, Fallopian tube and small intestine tissue. IF: U-2 OS cells.
<b>General notes</b>	<p>The Life Science industry has been in the grips of a reproducibility crisis for a number of years. Abcam is leading the way in addressing this with our range of recombinant monoclonal antibodies and knockout edited cell lines for gold-standard validation. Please check that this product meets your needs before purchasing.</p> <p>If you have any questions, special requirements or concerns, please send us an inquiry and/or contact our Support team ahead of purchase. Recommended alternatives for this product can be found below, along with publications, customer reviews and Q&amp;As</p>

### Properties

<b>Form</b>	Liquid
<b>Storage instructions</b>	Shipped at 4°C. Store at +4°C short term (1-2 weeks). Upon delivery aliquot. Store at -20°C long term. Avoid freeze / thaw cycle.
<b>Storage buffer</b>	pH: 7.20 Preservative: 0.02% Sodium azide Constituents: 40% Glycerol (glycerin, glycerine), PBS
<b>Purity</b>	Immunogen affinity purified
<b>Clonality</b>	Polyclonal
<b>Isotype</b>	IgG

## Applications

### The Abpromise guarantee

Our [Abpromise guarantee](#) covers the use of ab272644 in the following tested applications.

The application notes include recommended starting dilutions; optimal dilutions/concentrations should be determined by the end user.

Application	Abreviews	Notes
ICC/IF		Use a concentration of 0.25 - 2 µg/ml.
WB		Use a concentration of 0.04 - 0.4 µg/ml.
IHC-P		1/50 - 1/200. Perform heat mediated antigen retrieval with citrate buffer pH 6 before commencing with IHC staining protocol.

## Target

### Function

May be required for the heart morphogenesis.

### Tissue specificity

Widely expressed.

### Sequence similarities

Belongs to the TMEM2 family.

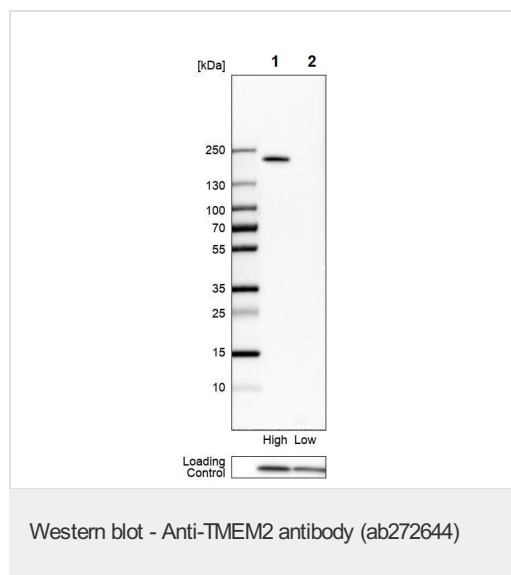
Contains 1 G8 domain.

Contains 3 PbH1 repeats.

### Cellular localization

Membrane.

## Images

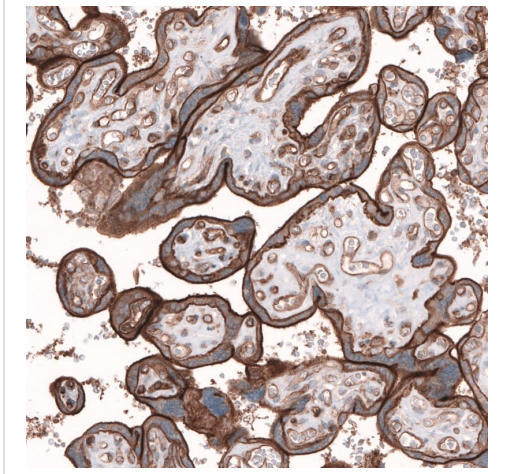


**All lanes :** Anti-TMEM2 antibody (ab272644) at 0.4 µg/ml

**Lane 1 :** A549 cells (Human lung carcinoma cell line)

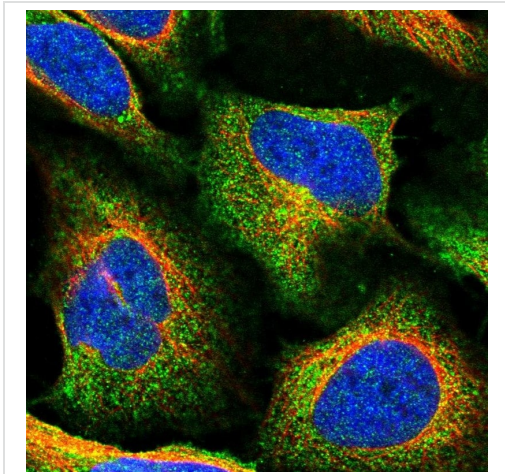
**Lane 2 :** PC-3 cells (Human prostate adenocarcinoma cell line)

Western blot - Anti-TMEM2 antibody (ab272644)



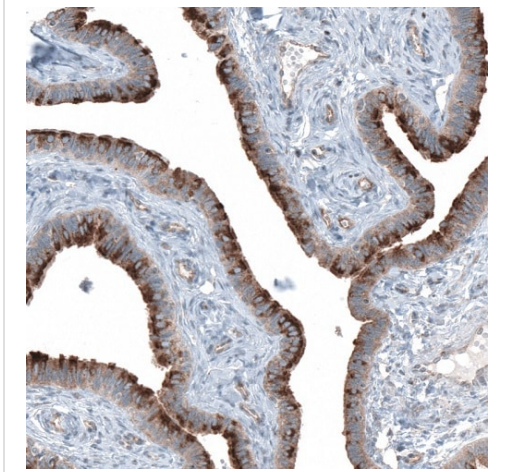
Paraffin-embedded formalin-fixed human placenta tissue stained for TMEM2 using ab272644 at 1/50 dilution in immunohistochemical analysis.

Immunohistochemistry (Formalin/PFA-fixed paraffin-embedded sections) - Anti-TMEM2 antibody (ab272644)



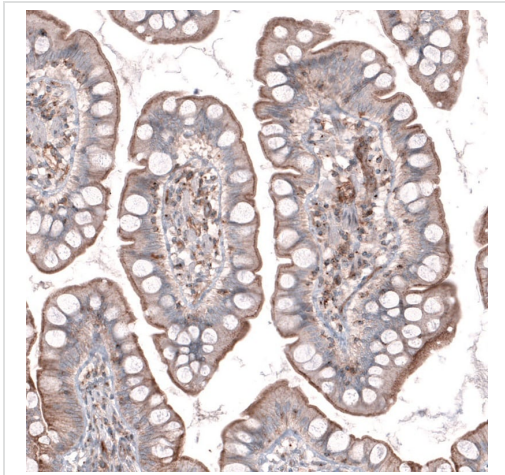
PFA fixed, Triton X-100 permeabilized U-2 OS cells (human bone osteosarcoma epithelial cell line) labeling TMEM2 (green) using ab272644 at 2 ug/ml in ICC/IF analysis.

Immunocytochemistry/ Immunofluorescence - Anti-TMEM2 antibody (ab272644)



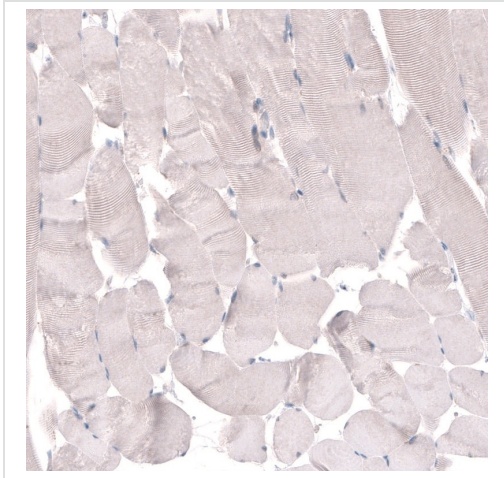
Paraffin-embedded formalin-fixed human Fallopian tube tissue stained for TMEM2 using ab272644 at 1/50 dilution in immunohistochemical analysis.

Immunohistochemistry (Formalin/PFA-fixed paraffin-embedded sections) - Anti-TMEM2 antibody (ab272644)



Paraffin-embedded formalin-fixed human small intestine tissue stained for TMEM2 using ab272644 at 1/50 dilution in immunohistochemical analysis.

Immunohistochemistry (Formalin/PFA-fixed paraffin-embedded sections) - Anti-TMEM2 antibody (ab272644)



Immunohistochemistry (Formalin/PFA-fixed paraffin-embedded sections) - Anti-TMEM2 antibody (ab272644)

Paraffin-embedded formalin-fixed human skeletal tissue stained for TMEM2 using ab272644 at 1/50 dilution in immunohistochemical analysis. Shows no expression as expected.

**Please note:** All products are "FOR RESEARCH USE ONLY. NOT FOR USE IN DIAGNOSTIC PROCEDURES"

### Our Abpromise to you: Quality guaranteed and expert technical support

---

- Replacement or refund for products not performing as stated on the datasheet
- Valid for 12 months from date of delivery
- Response to your inquiry within 24 hours
- We provide support in Chinese, English, French, German, Japanese and Spanish
- Extensive multi-media technical resources to help you
- We investigate all quality concerns to ensure our products perform to the highest standards

If the product does not perform as described on this datasheet, we will offer a refund or replacement. For full details of the Abpromise, please visit <https://www.abcam.com/abpromise> or contact our technical team.

### Terms and conditions

---

- Guarantee only valid for products bought direct from Abcam or one of our authorized distributors