

Product datasheet

Anti-TMEM33 antibody ab242108

2 Images

Overview

Product name	Anti-TMEM33 antibody
Description	Rabbit polyclonal to TMEM33
Host species	Rabbit
Tested applications	Suitable for: WB, IP
Species reactivity	Reacts with: Human
Immunogen	Synthetic peptide within Human TMEM33 aa 197-247. The exact sequence is proprietary. Database link: P57088
Positive control	WB: HeLa, HEK-293T and Jurkat whole cell lysates. IP: HEK-293T whole cell lysate.
General notes	<p>Reproducibility is key to advancing scientific discovery and accelerating scientists' next breakthrough.</p> <p>Abcam is leading the way with our range of recombinant antibodies, knockout-validated antibodies and knockout cell lines, all of which support improved reproducibility.</p> <p>We are also planning to innovate the way in which we present recommended applications and species on our product datasheets, so that only applications & species that have been tested in our own labs, our suppliers or by selected trusted collaborators are covered by our Abpromise™ guarantee.</p> <p>In preparation for this, we have started to update the applications & species that this product is Abpromise guaranteed for.</p> <p>We are also updating the applications & species that this product has been “predicted to work with,” however this information is not covered by our Abpromise guarantee.</p> <p>Applications & species from publications and Abreviews that have not been tested in our own labs or in those of our suppliers are not covered by the Abpromise guarantee.</p> <p>Please check that this product meets your needs before purchasing. If you have any questions, special requirements or concerns, please send us an inquiry and/or contact our Support team ahead of purchase. Recommended alternatives for this product can be found below, as well as customer reviews and Q&As.</p>

Properties

Form	Liquid
Storage instructions	Shipped at 4°C. Store at +4°C short term (1-2 weeks). Upon delivery aliquot. Store at -20°C long

term. Avoid freeze / thaw cycle.

Storage buffer

pH: 6.8

Preservative: 0.09% Sodium azide

Constituents: Tris buffered saline, 0.1% BSA

Purity

Immunogen affinity purified

Purification notes

Antibody was affinity purified using an epitope specific to TMEM33 immobilized on solid support.

Clonality

Polyclonal

Isotype

IgG

Applications

Our [Abpromise guarantee](#) covers the use of **ab242108** in the following tested applications.

The application notes include recommended starting dilutions; optimal dilutions/concentrations should be determined by the end user.

Application	Abreviews	Notes
WB		1/1000. Predicted molecular weight: 28 kDa.
IP		Use at an assay dependent concentration. 20 µl/mg lysate

Target

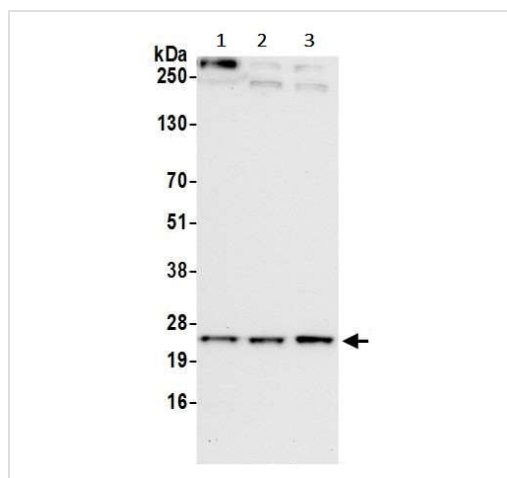
Sequence similarities

Belongs to the PER33/POM33 family.

Cellular localization

Membrane. Melanosome. Identified by mass spectrometry in melanosome fractions from stage I to stage IV.

Images



Western blot - Anti-TMEM33 antibody (ab242108)

All lanes : Anti-TMEM33 antibody (ab242108) at 1/1000 dilution

Lane 1 : HeLa (human epithelial cell line from cervix adenocarcinoma) whole cell lysate

Lane 2 : HEK-293T (human epithelial cell line from embryonic kidney transformed with large T antigen) whole cell lysate

Lane 3 : Jurkat (human T cell leukemia cell line from peripheral blood) whole cell lysate

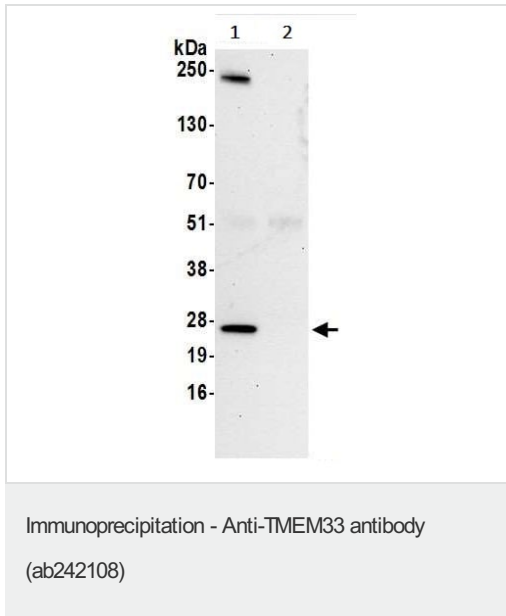
Lysates/proteins at 15 µg per lane.

Developed using the ECL technique.

Predicted band size: 28 kDa

Exposure time: 10 seconds

Lysates prepared in NETN buffer.



TMEM33 was immunoprecipitated from HEK-293T (human epithelial cell line from embryonic kidney transformed with large T antigen) whole cell lysate (1 mg for IP, 20% of IP loaded) with ab242108 at 20 μ l/reaction. Western blot was performed from the immunoprecipitate using ab242108 at 1/100 dilution.

Lane 1: ab242108 IP in HEK-293T whole cell lysate.

Lane 2: Control IgG IP in HEK-293T whole cell lysate.

Detection: Chemiluminescence with exposure time of 30 seconds.

Lysates prepared in NETN buffer.

Please note: All products are "FOR RESEARCH USE ONLY. NOT FOR USE IN DIAGNOSTIC PROCEDURES"

Our Abpromise to you: Quality guaranteed and expert technical support

- Replacement or refund for products not performing as stated on the datasheet
- Valid for 12 months from date of delivery
- Response to your inquiry within 24 hours
- We provide support in Chinese, English, French, German, Japanese and Spanish
- Extensive multi-media technical resources to help you
- We investigate all quality concerns to ensure our products perform to the highest standards

If the product does not perform as described on this datasheet, we will offer a refund or replacement. For full details of the Abpromise, please visit <https://www.abcam.com/abpromise> or contact our technical team.

Terms and conditions

- Guarantee only valid for products bought direct from Abcam or one of our authorized distributors