


Product datasheet

Anti-TMLHE antibody ab150835

1 Image

Overview

<b>Product name</b>	Anti-TMLHE antibody
<b>Description</b>	Rabbit polyclonal to TMLHE
<b>Host species</b>	Rabbit
<b>Tested applications</b>	<b>Suitable for:</b> IHC-P
<b>Species reactivity</b>	<b>Reacts with:</b> Human <b>Predicted to work with:</b> Mouse, Rat 
<b>Immunogen</b>	Recombinant fragment, corresponding to amino acids 233-318 of Human TMLHE (UniProt: Q9NVH6). <a href="#">Run BLAST with ExPASy</a> <a href="#">Run BLAST with NCBI</a>
<b>Positive control</b>	Human kidney tissue.
<b>General notes</b>	Store product undiluted. The antibody solution should be gently mixed before use.

Properties

<b>Form</b>	Liquid
<b>Storage instructions</b>	Shipped at 4°C. Upon delivery aliquot and store at -20°C. Avoid repeated freeze / thaw cycles.
<b>Storage buffer</b>	pH: 7.20 Preservative: 0.02% Sodium azide Constituents: 59% PBS, 40% Glycerol
<b>Purity</b>	Immunogen affinity purified
<b>Clonality</b>	Polyclonal
<b>Isotype</b>	IgG

Applications

Our [Abpromise guarantee](#) covers the use of **ab150835** in the following tested applications.

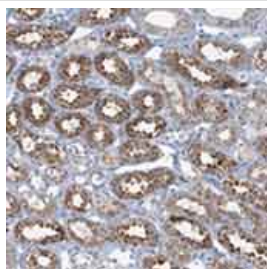
The application notes include recommended starting dilutions; optimal dilutions/concentrations should be determined by the end user.

Application	Abreviews	Notes
IHC-P		1/50 - 1/200. Perform heat mediated antigen retrieval with citrate buffer pH 6 before commencing with IHC staining protocol.

## Target

<b>Function</b>	Converts trimethyllysine (TML) into hydroxytrimethyllysine (HTML).
<b>Tissue specificity</b>	All isoforms, but isoform 8, are widely expressed in adult and fetal tissues. Isoform 8 is restricted to heart and skeletal muscle.
<b>Pathway</b>	Amine and polyamine biosynthesis; carnitine biosynthesis.
<b>Involvement in disease</b>	Autism, X-linked 6
<b>Sequence similarities</b>	Belongs to the gamma-BBH/TMLD family.
<b>Cellular localization</b>	Mitochondrion matrix.

## Images



Immunohistochemical analysis of Paraffin-embedded Human kidney tissue labeling TMLHE with ab150835 at 1/50 dilution.

Immunohistochemistry (Formalin/PFA-fixed paraffin-embedded sections) - Anti-TMLHE antibody (ab150835)

**Please note:** All products are "FOR RESEARCH USE ONLY. NOT FOR USE IN DIAGNOSTIC PROCEDURES"

## Our Abpromise to you: Quality guaranteed and expert technical support

- Replacement or refund for products not performing as stated on the datasheet
- Valid for 12 months from date of delivery
- Response to your inquiry within 24 hours
- We provide support in Chinese, English, French, German, Japanese and Spanish
- Extensive multi-media technical resources to help you
- We investigate all quality concerns to ensure our products perform to the highest standards

If the product does not perform as described on this datasheet, we will offer a refund or replacement. For full details of the Abpromise, please visit <https://www.abcam.com/abpromise> or contact our technical team.

## Terms and conditions

---

- Guarantee only valid for products bought direct from Abcam or one of our authorized distributors