

Product datasheet

Anti-TMPRSS2 antibody [EPR24407-87] ab280567

KO VALIDATED Recombinant RabMAB

[1 Abreviews](#) [4 Images](#)

Overview

Product name	Anti-TMPRSS2 antibody [EPR24407-87]
Description	Rabbit monoclonal [EPR24407-87] to TMPRSS2
Host species	Rabbit
Tested applications	Suitable for: Flow Cyt, ICC/IF Unsuitable for: IHC-P, IP or WB
Species reactivity	Reacts with: Human
Immunogen	Recombinant fragment. This information is proprietary to Abcam and/or its suppliers.
Positive control	ICC/IF: LNCaP cells. Flow Cyt: LNCaP cells.
General notes	This product is a recombinant monoclonal antibody, which offers several advantages including: <ul style="list-style-type: none">- High batch-to-batch consistency and reproducibility- Improved sensitivity and specificity- Long-term security of supply- Animal-free production For more information see here . Our RabMAB [®] technology is a patented hybridoma-based technology for making rabbit monoclonal antibodies. For details on our patents, please refer to RabMAB[®] patents .

Properties

Form	Liquid
Storage instructions	Shipped at 4°C. Store at +4°C short term (1-2 weeks). Upon delivery aliquot. Store at -20°C long term. Avoid freeze / thaw cycle.
Storage buffer	Preservative: 0.01% Sodium azide Constituents: 59.94% PBS, 40% Glycerol (glycerin, glycerine), 0.05% BSA
Purity	Protein A purified
Clonality	Monoclonal
Clone number	EPR24407-87
Isotype	IgG

Applications

The Abpromise guarantee

Our **Abpromise guarantee** covers the use of ab280567 in the following tested applications.

The application notes include recommended starting dilutions; optimal dilutions/concentrations should be determined by the end user.

Application	Abreviews	Notes
Flow Cyt		1/200.
ICC/IF		1/50.

Application notes

Is unsuitable for IHC-P, IP or WB.

Target

Tissue specificity

Expressed strongly in small intestine. Also expressed in prostate, colon, stomach and salivary gland.

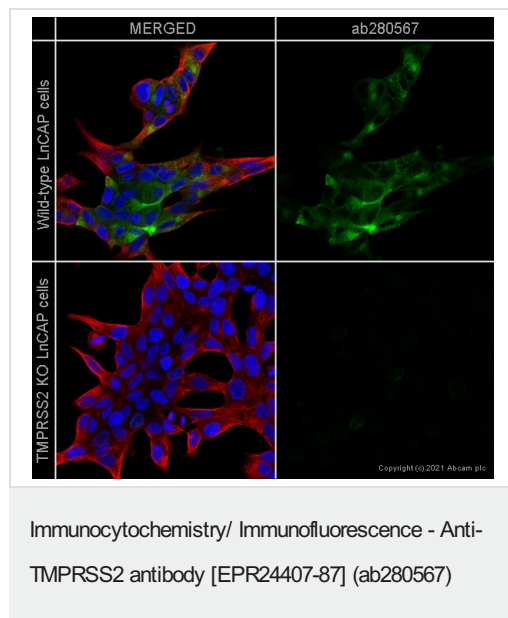
Sequence similarities

Belongs to the peptidase S1 family.
Contains 1 LDL-receptor class A domain.
Contains 1 peptidase S1 domain.
Contains 1 SRCR domain.

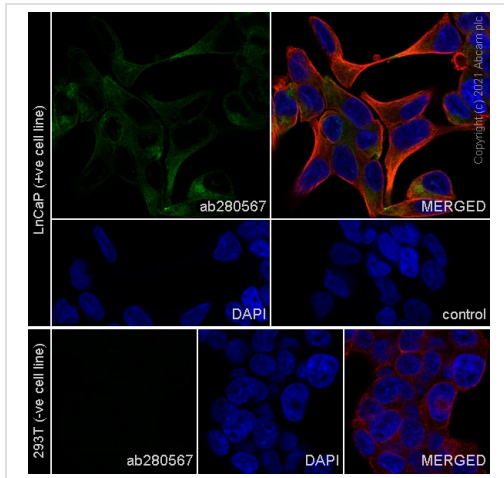
Cellular localization

Cell membrane and Secreted. Activated by cleavage and secreted.

Images



ab280567 staining TMPRSS2 in wild-type LnCAP cells (top panel) and TMPRSS2 knockout LnCAP cells (**ab273745**) (bottom panel). The cells were fixed with 4% paraformaldehyde (10 min) then permeabilized with 0.1% Triton X-100 for 5 minutes and then blocked with 1% BSA/10% normal goat serum/0.3M glycine in 0.1% PBS-Tween for 1h. The cells were then incubated with ab280567 at 1 µg/ml concentration and **ab7291** (Mouse monoclonal to alpha Tubulin) at 1/1000 dilution overnight at 4°C followed by a further incubation at room temperature for 1h with a goat secondary antibody to rabbit IgG (Alexa Fluor® 488) (**ab150081**) at 2 µg/ml (shown in green) and a goat secondary antibody to mouse IgG (Alexa Fluor® 594) (**ab150120**) at 2 µg/ml (shown in red). Nuclear DNA was labelled in blue with DAPI. Image was taken with a confocal microscope (Leica-Microsystems TCS SP8).



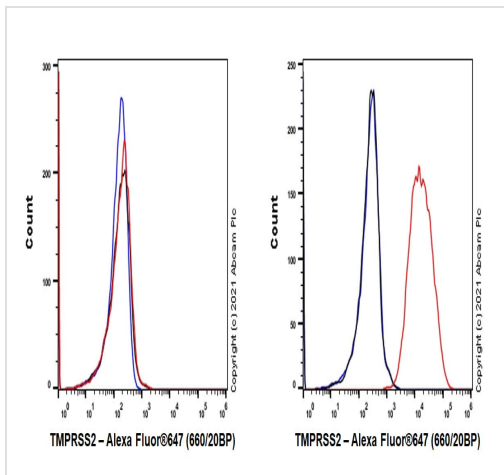
Immunocytochemistry/ Immunofluorescence - Anti-TMPRSS2 antibody [EPR24407-87] (ab280567)

Immunofluorescent analysis of 4% Paraformaldehyde-fixed, 0.1% Triton X-100 permeabilized LNCaP and HEK-293 cells labelling TMPRSS2 with ab280567 at 1/50 dilution, followed by **ab150077** Goat Anti-Rabbit IgG H&L (Alexa Fluor® 488) antibody at 1/1000 dilution (Green). Confocal image showing cytoplasmic and membranous staining in LNCaP cell line.

Negative control: HEK-293 (PMID:20631123).

ab195889 Anti-alpha Tubulin mouse monoclonal antibody - Microtubule Marker (Alexa Fluor® 594) was used to counterstain tubulin at 1/200 dilution (Red). The nuclear counterstain was DAPI (Blue).

Secondary antibody only control: Secondary antibody is **ab150077** Goat Anti-Rabbit IgG H&L (Alexa Fluor® 488) at 1/1000 dilution.




Flow Cytometry - Anti-TMPRSS2 antibody [EPR24407-87] (ab280567)

Intracellular flow cytometric analysis of HEK-293T (Human embryonic kidney epithelial cell, Left)/ LNCaP (Human prostate carcinoma epithelial cell, Right) cells labelling TMPRSS2 with ab280567 at 1/500 dilution (0.1µg)/ red compared with Rabbit monoclonal IgG (**ab172730**) (Black) isotype control and an unlabelled control (cells without incubation with primary antibody and secondary antibody) (Blue). Goat anti rabbit IgG (Alexa Fluor® 647, **ab150079**) at 1/2000 dilution was used as the secondary antibody.

Negative control: HEK-239T (PMID: 20631123).

Gated on viable cells.

Why choose a recombinant antibody?



Research with confidence
Consistent and reproducible results

Long-term and scalable supply
Recombinant technology

Success from the first experiment
Confirmed specificity

Ethical standards compliant
Animal-free production

Anti-TMPRSS2 antibody [EPR24407-87] (ab280567)

Please note: All products are "FOR RESEARCH USE ONLY. NOT FOR USE IN DIAGNOSTIC PROCEDURES"

Our Abpromise to you: Quality guaranteed and expert technical support

- Replacement or refund for products not performing as stated on the datasheet
- Valid for 12 months from date of delivery
- Response to your inquiry within 24 hours
- We provide support in Chinese, English, French, German, Japanese and Spanish
- Extensive multi-media technical resources to help you
- We investigate all quality concerns to ensure our products perform to the highest standards

If the product does not perform as described on this datasheet, we will offer a refund or replacement. For full details of the Abpromise, please visit <https://www.abcam.com/abpromise> or contact our technical team.

Terms and conditions

- Guarantee only valid for products bought direct from Abcam or one of our authorized distributors