

Product datasheet

Anti-TOB2 antibody [EPR12588] - N-terminal ab180514

Recombinant RabMAb

2 Images

Overview

Product name	Anti-TOB2 antibody [EPR12588] - N-terminal
Description	Rabbit monoclonal [EPR12588] to TOB2 - N-terminal
Host species	Rabbit
Tested applications	Suitable for: WB, IP
Species reactivity	Reacts with: Mouse, Rat, Human
Immunogen	Synthetic peptide within Human TOB2 aa 1-100 (N terminal). The exact sequence is proprietary. Database link: Q14106
Positive control	HeLa, K562, Ramos and Human skeletal muscle cell lysates.
General notes	

This product is a recombinant monoclonal antibody, which offers several advantages including:

- High batch-to-batch consistency and reproducibility
- Improved sensitivity and specificity
- Long-term security of supply
- Animal-free production

For more information [see here](#).

Our RabMAb[®] technology is a patented hybridoma-based technology for making rabbit monoclonal antibodies. For details on our patents, please refer to [RabMAb[®] patents](#).

Properties

Form	Liquid
Storage instructions	Shipped at 4°C. Store at +4°C short term (1-2 weeks). Upon delivery aliquot. Store at -20°C long term. Avoid freeze / thaw cycle.
Storage buffer	Preservative: 0.01% Sodium azide Constituents: 59% PBS, 40% Glycerol, 0.05% BSA
Purity	Tissue culture supernatant
Clonality	Monoclonal
Clone number	EPR12588

Isotype

IgG

Applications

Our [Abpromise guarantee](#) covers the use of **ab180514** in the following tested applications.

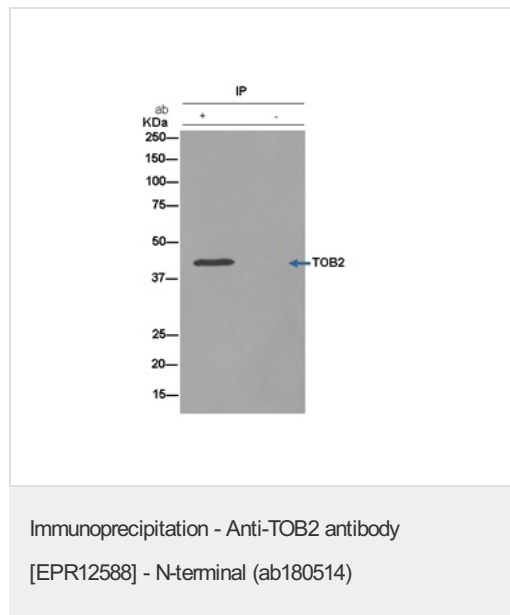
The application notes include recommended starting dilutions; optimal dilutions/concentrations should be determined by the end user.

Application	Abreviews	Notes
WB		1/10000 - 1/50000. Predicted molecular weight: 37 kDa.
IP		1/50.

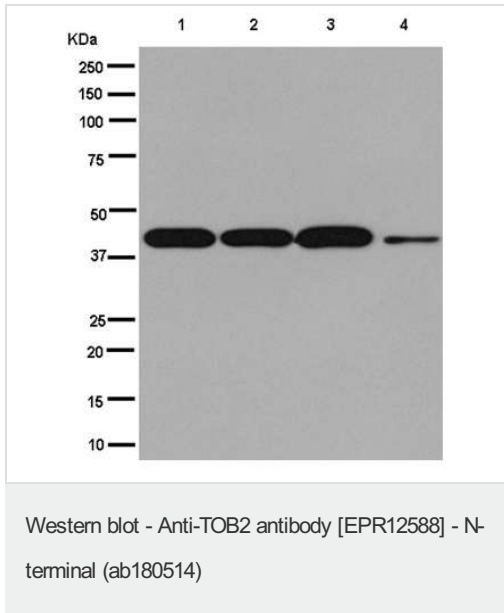
Target

Function	Anti-proliferative protein inhibits cell cycle progression from the G0/G1 to S phases.
Tissue specificity	Ubiquitous.
Sequence similarities	Belongs to the BTG family.
Cellular localization	Cytoplasm.

Images



Immunoprecipitation analysis of K562 cell lysate labeling TOB2 using ab180514 at 1/50 dilution in Lane 1. Lane 2 is the negative control. A rabbit anti rabbit IgG HRP was used as secondary antibody.



All lanes : Anti-TOB2 antibody [EPR12588] - N-terminal (ab180514) at 1/20000 dilution

Lane 1 : Ramos cell lysate

Lane 2 : HeLa cell lysate

Lane 3 : K562 cell lysate

Lane 4 : Human skeletal cell lysate

Lysates/proteins at 20 µg per lane.

Secondary

All lanes : Goat Anti-Rabbit IgG, (H+L), Peroxidase conjugated at 1/1000 dilution

Predicted band size: 37 kDa

Please note: All products are "FOR RESEARCH USE ONLY. NOT FOR USE IN DIAGNOSTIC PROCEDURES"

Our Abpromise to you: Quality guaranteed and expert technical support

- Replacement or refund for products not performing as stated on the datasheet
- Valid for 12 months from date of delivery
- Response to your inquiry within 24 hours
- We provide support in Chinese, English, French, German, Japanese and Spanish
- Extensive multi-media technical resources to help you
- We investigate all quality concerns to ensure our products perform to the highest standards

If the product does not perform as described on this datasheet, we will offer a refund or replacement. For full details of the Abpromise, please visit <https://www.abcam.com/abpromise> or contact our technical team.

Terms and conditions

- Guarantee only valid for products bought direct from Abcam or one of our authorized distributors