

Product datasheet

Anti-TOM70 antibody ab83841

★ ★ ★ ★ ★ 1 Abreviews 1 References 7 Images

Overview

Product name	Anti-TOM70 antibody
Description	Rabbit polyclonal to TOM70
Host species	Rabbit
Specificity	At least two isoforms of TOM70 are known to exist; this antibody will only detect the larger isoform. The antibody has been validated in mouse samples. Please use ab251925 for human samples.
Tested applications	Suitable for: IHC-P, WB
Species reactivity	Reacts with: Mouse, Human Predicted to work with: Rat
Immunogen	Synthetic peptide corresponding to Human TOM70 (N terminal). ab83841 was raised against a 17 amino acid synthetic peptide near the amino terminus of human TOM70. The immunogen is located within amino acids 50 - 100 of TOM70. Database link: O94826
Positive control	293, A431, HeLa, 3T3/NIH cell lysates. Mouse brain tissue.
General notes	Protein previously labeled as TOMM70A.

Reproducibility is key to advancing scientific discovery and accelerating scientists' next breakthrough.

Abcam is leading the way with our range of recombinant antibodies, knockout-validated antibodies and knockout cell lines, all of which support improved reproducibility.

We are also planning to innovate the way in which we present recommended applications and species on our product datasheets, so that only applications & species that have been tested in our own labs, our suppliers or by selected trusted collaborators are covered by our Abpromise™ guarantee.

In preparation for this, we have started to update the applications & species that this product is Abpromise guaranteed for.

We are also updating the applications & species that this product has been "predicted to work with," however this information is not covered by our Abpromise guarantee.

Applications & species from publications and Abreviews that have not been tested in our own labs or in those of our suppliers are not covered by the Abpromise guarantee.

Please check that this product meets your needs before purchasing. If you have any questions, special requirements or concerns, please send us an inquiry and/or contact our Support team

ahead of purchase. Recommended alternatives for this product can be found below, as well as customer reviews and Q&As.


Properties

Form	Liquid
Storage instructions	Shipped at 4°C. Store at +4°C short term (1-2 weeks). Upon delivery aliquot. Store at +4°C. Avoid freeze / thaw cycle.
Storage buffer	pH: 7.2 Preservative: 0.02% Sodium azide Constituent: PBS
Purity	Immunogen affinity purified
Clonality	Polyclonal
Isotype	IgG

Applications

Our [Abpromise guarantee](#) covers the use of **ab83841** in the following tested applications.

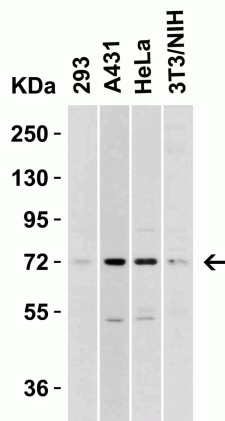
The application notes include recommended starting dilutions; optimal dilutions/concentrations should be determined by the end user.

Application	Abreviews	Notes
IHC-P		Use a concentration of 2.5 µg/ml.
WB		Use a concentration of 2 µg/ml. Predicted molecular weight: 67 kDa.
IF		Use a concentration of 20 µg/ml.

Target

Function	Receptor that accelerates the import of all mitochondrial precursor proteins.
Sequence similarities	Belongs to the Tom70 family. Contains 10 TPR repeats.
Cellular localization	Mitochondrion outer membrane.

Images



Western blot - Anti-TOM70 antibody (ab83841)

All lanes : Anti-TOM70 antibody (ab83841) at 2 µg/ml

Lane 1 : 293 cell lysates

Lane 2 : A431 cell lysates

Lane 3 : HeLa cell lysates

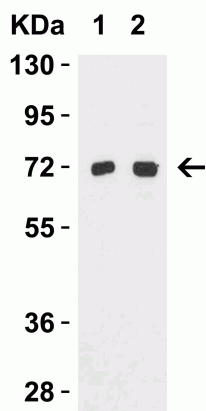
Lane 4 : 3T3/NIH cell lysates

Lysates/proteins at 15 µg per lane.

Secondary

All lanes : Goat anti-rabbit IgG HRP conjugate at 1/10000 dilution

Predicted band size: 67 kDa



Western blot - Anti-TOM70 antibody (ab83841)

Lane 1 : Anti-TOM70 antibody (ab83841) at 2 µg/ml

Lane 2 : Anti-TOM70 antibody (ab83841) at 4 µg/ml

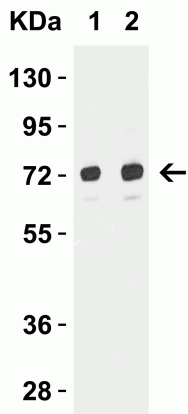
All lanes : Mouse brain tissue lysate

Lysates/proteins at 15 µg per lane.

Secondary

All lanes : Goat anti-rabbit IgG HRP conjugate at 1/10000 dilution

Predicted band size: 67 kDa



Western blot - Anti-TOM70 antibody (ab83841)

Lane 1 : Anti-TOM70 antibody (ab83841) at 2 µg/ml

Lane 2 : Anti-TOM70 antibody (ab83841) at 4 µg/ml

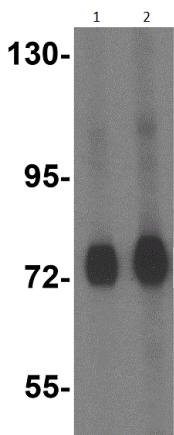
All lanes : Rat brain tissue lysate

Lysates/proteins at 15 µg per lane.

Secondary

All lanes : Goat anti-rabbit IgG HRP conjugate at 1/10000 dilution

Predicted band size: 67 kDa



Western blot - Anti-TOM70 antibody (ab83841)

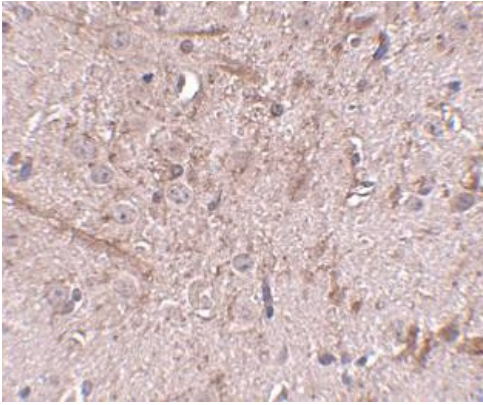
Lane 1 : Anti-TOM70 antibody (ab83841) at 0.5 µg/ml

Lane 2 : Anti-TOM70 antibody (ab83841) at 1 µg/ml

All lanes : Mouse brain tissue lysate

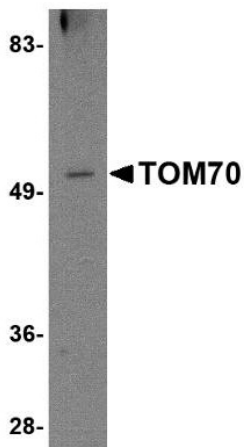
Predicted band size: 67 kDa

Observed band size: 67 kDa



Immunohistochemistry (Formalin/PFA-fixed paraffin-embedded sections) - Anti-TOM70 antibody (ab83841)

Immunohistochemistry (IHC-P) of TOM70 in mouse brain tissue with ab83841 at 2.5 µg/ml.



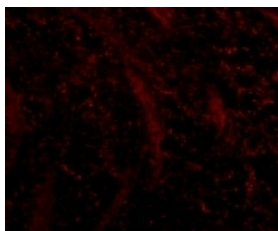
Western blot - Anti-TOM70 antibody (ab83841)

Anti-TOM70 antibody (ab83841) at 2 µg/ml + 293 cell lysate at 15 µg

Predicted band size: 67 kDa

Observed band size: 55 kDa

[why is the actual band size different from the predicted?](#)



Immunofluorescence - Anti-TOM70 antibody (ab83841)

Immunohistochemical analysis of mouse brain tissue section labelling TOM70 with ab83841 at 5 µg/ml.

Please note: All products are "FOR RESEARCH USE ONLY. NOT FOR USE IN DIAGNOSTIC PROCEDURES"

Our Abpromise to you: Quality guaranteed and expert technical support

- Replacement or refund for products not performing as stated on the datasheet
- Valid for 12 months from date of delivery
- Response to your inquiry within 24 hours

- We provide support in Chinese, English, French, German, Japanese and Spanish
- Extensive multi-media technical resources to help you
- We investigate all quality concerns to ensure our products perform to the highest standards

If the product does not perform as described on this datasheet, we will offer a refund or replacement. For full details of the Abpromise, please visit <https://www.abcam.com/abpromise> or contact our technical team.

Terms and conditions

- Guarantee only valid for products bought direct from Abcam or one of our authorized distributors