


Product datasheet

Anti-TOMM20 antibody [EPR15581-54] - Mitochondrial Marker (Allophycocyanin) ab225341

Recombinant RabMAb

1 Image

Overview

Product name	Anti-TOMM20 antibody [EPR15581-54] - Mitochondrial Marker (Allophycocyanin)
Description	Rabbit monoclonal [EPR15581-54] to TOMM20 - Mitochondrial Marker (Allophycocyanin)
Host species	Rabbit
Conjugation	Allophycocyanin. Ex: 645nm, Em: 660nm
Tested applications	Suitable for: Flow Cyt
Species reactivity	Reacts with: Human Predicted to work with: Mouse, Rat 
Immunogen	Recombinant fragment within Human TOMM20 aa 1 to the C-terminus. The exact sequence is proprietary. Database link: Q15388
Positive control	Flow Cyt: HeLa cells
General notes	Our RabMAb [®] technology is a patented hybridoma-based technology for making rabbit monoclonal antibodies. For details on our patents, please refer to RabMAb[®] patents This product is a recombinant rabbit monoclonal antibody.

Properties

Form	Liquid
Storage instructions	Shipped at 4°C. Store at 4°C (stable for up to 12 months). Upon delivery aliquot. Store at +4°C. Do Not Freeze. Store In the Dark.
Storage buffer	pH: 7.40 Preservative: 0.02% Sodium azide Constituents: 1% BSA, PBS
Purity	Protein A purified
Clonality	Monoclonal
Clone number	EPR15581-54
Isotype	IgG

Applications

Our [Abpromise guarantee](#) covers the use of **ab225341** in the following tested applications.

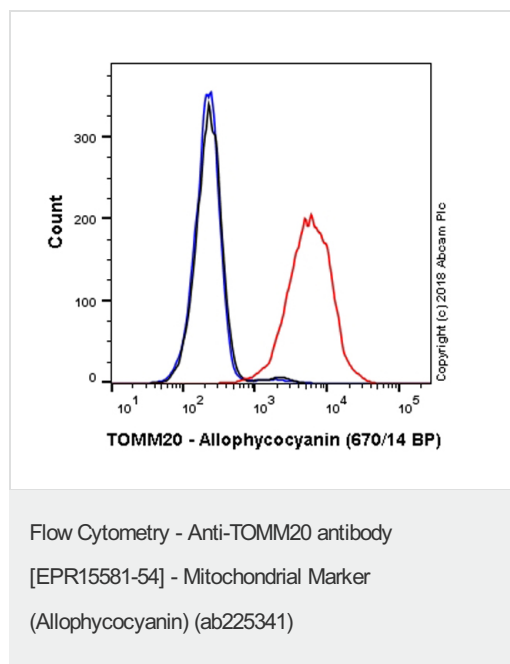
The application notes include recommended starting dilutions; optimal dilutions/concentrations should be determined by the end user.

Application	Abreviews	Notes
Flow Cyt		1/5000. The cellular localisation of this product has been verified in ICC/IF.

Target

Function	Central component of the receptor complex responsible for the recognition and translocation of cytosolically synthesized mitochondrial preproteins. Together with TOM22 functions as the transit peptide receptor at the surface of the mitochondrion outer membrane and facilitates the movement of preproteins into the TOM40 translocation pore.
Sequence similarities	Belongs to the Tom20 family.
Cellular localization	Mitochondrion outer membrane.

Images



Overlay histogram showing HeLa cells stained with ab225341 (red line). The cells were fixed with 4% formaldehyde (10 min) and then permeabilized with 0.1% PBS-Triton X-100 for 15 min. The cells were then incubated in 1x PBS / 10% normal goat serum to block non-specific protein-protein interactions followed by the antibody (ab225341, 1/5000 dilution) for 30 min at 22°C.

Isotype control antibody (black line) was Rabbit IgG (monoclonal) Allophycocyanin used at the same concentration and conditions as the primary antibody. Unlabelled sample (blue line) was also used as a control.

Acquisition of >5,000 events were collected using a 40 mW Red laser (640nm) and 670/14 bandpass filter.

Please note: All products are "FOR RESEARCH USE ONLY. NOT FOR USE IN DIAGNOSTIC PROCEDURES"

Our Abpromise to you: Quality guaranteed and expert technical support

- Replacement or refund for products not performing as stated on the datasheet

- Valid for 12 months from date of delivery
- Response to your inquiry within 24 hours

- We provide support in Chinese, English, French, German, Japanese and Spanish
- Extensive multi-media technical resources to help you
- We investigate all quality concerns to ensure our products perform to the highest standards

If the product does not perform as described on this datasheet, we will offer a refund or replacement. For full details of the Abpromise, please visit <https://www.abcam.com/abpromise> or contact our technical team.

Terms and conditions

- Guarantee only valid for products bought direct from Abcam or one of our authorized distributors