

## Product datasheet

# Anti-TOMM22/TOM22 antibody [EPR13505] - N-terminal ab179826

Recombinant RabMAb

[3 References](#) [7 Images](#)

### Overview

<b>Product name</b>	Anti-TOMM22/TOM22 antibody [EPR13505] - N-terminal
<b>Description</b>	Rabbit monoclonal [EPR13505] to TOMM22/TOM22 - N-terminal
<b>Host species</b>	Rabbit
<b>Tested applications</b>	<b>Suitable for:</b> WB, IHC-P, ICC/IF, IP, Flow Cyt (Intra)
<b>Species reactivity</b>	<b>Reacts with:</b> Human
<b>Immunogen</b>	Synthetic peptide within Human TOMM22/TOM22 aa 1-100 (N terminal) (Cysteine residue). The exact sequence is proprietary. Database link: <a href="#">Q9NS69</a>
<b>Positive control</b>	HeLa, K562, Raji and 293T cell lysates. Kidney and liver tissue. Raji and 293T cells.
<b>General notes</b>	<p>This product is a recombinant monoclonal antibody, which offers several advantages including:</p> <ul style="list-style-type: none"> <li>- High batch-to-batch consistency and reproducibility</li> <li>- Improved sensitivity and specificity</li> <li>- Long-term security of supply</li> <li>- Animal-free production</li> </ul> <p>For more information <a href="#">see here</a>.</p> <p>Our RabMAb<sup>®</sup> technology is a patented hybridoma-based technology for making rabbit monoclonal antibodies. For details on our patents, please refer to <a href="#">RabMAb<sup>®</sup> patents</a>.</p> <p><b>We are constantly working hard to ensure we provide our customers with best in class antibodies. As a result of this work we are pleased to now offer this antibody in purified format. We are in the process of updating our datasheets. The purified format is designated 'PUR' on our product labels. If you have any questions regarding this update, please contact our Scientific Support team.</b></p> <p>Mouse, Rat: We have preliminary internal testing data to indicate this antibody may not react with these species. Please contact us for more information.</p>

### Properties

**Form** Liquid

<b>Storage instructions</b>	Shipped at 4°C. Store at +4°C short term (1-2 weeks). Upon delivery aliquot. Store at -20°C long term. Avoid freeze / thaw cycle.
<b>Storage buffer</b>	pH: 7.20 Preservative: 0.01% Sodium azide Constituents: 9% PBS, 40% Glycerol (glycerin, glycerine), 0.05% BSA, 50% Tissue culture supernatant
<b>Purity</b>	Tissue culture supernatant
<b>Clonality</b>	Monoclonal
<b>Clone number</b>	EPR13505
<b>Isotype</b>	IgG

## Applications

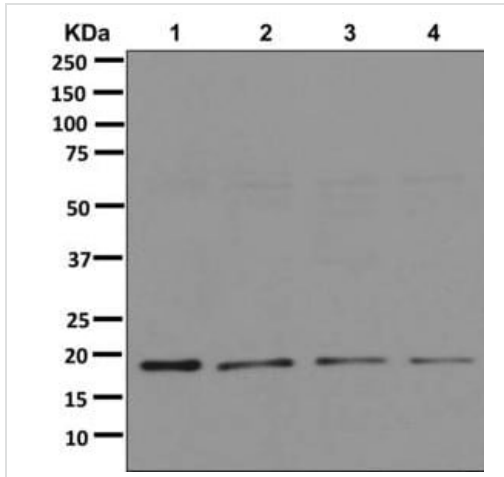
**The Abpromise guarantee** Our [Abpromise guarantee](#) covers the use of ab179826 in the following tested applications. The application notes include recommended starting dilutions; optimal dilutions/concentrations should be determined by the end user.

Application	Abreviews	Notes
WB		1/1000 - 1/5000. Predicted molecular weight: 16 kDa.
IHC-P		1/100 - 1/250. Perform heat mediated antigen retrieval with citrate buffer pH 6 before commencing with IHC staining protocol.
ICC/IF		1/100 - 1/250.
IP		1/10 - 1/100.
Flow Cyt (Intra)		1/10 - 1/100. <a href="#">ab172730</a> - Rabbit monoclonal IgG, is suitable for use as an isotype control with this antibody.

## Target

**Cellular localization** Mitochondrion outer membrane; Single-pass membrane protein

## Images



Western blot - Anti-TOMM22/TOM22 antibody [EPR13505] - N-terminal (ab179826)

**All lanes :** Anti-TOMM22/TOM22 antibody [EPR13505] - N-terminal (ab179826) at 1/1000 dilution

**Lane 1 :** Raji cell lysate

**Lane 2 :** HeLa cell lysate

**Lane 3 :** K562 cell lysate

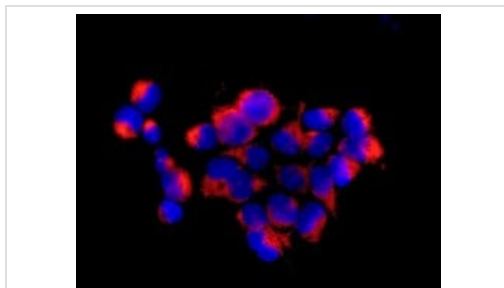
**Lane 4 :** 293T cell lysate

Lysates/proteins at 10 µg per lane.

**Secondary**

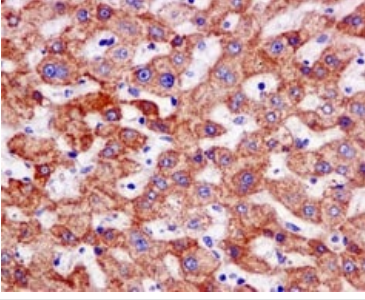
**All lanes :** Goat anti-rabbit HRP at 1/2000 dilution

**Predicted band size:** 16 kDa



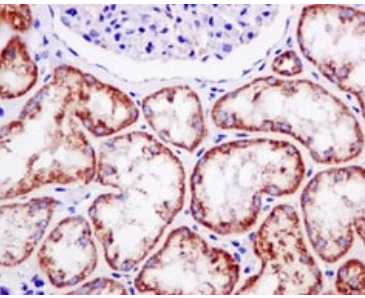
Immunocytochemistry/ Immunofluorescence - Anti-TOMM22/TOM22 antibody [EPR13505] - N-terminal (ab179826)

Immunofluorescent analysis of 293T cells labeling TOMM22/TOM22 with ab179826 at 1/100 dilution.



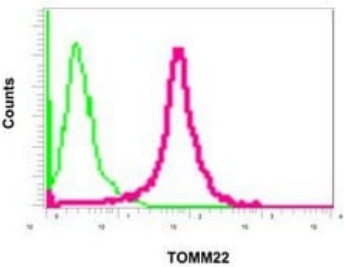
Immunohistochemistry (Formalin/PFA-fixed paraffin-embedded sections) - Anti-TOMM22/TOM22 antibody [EPR13505] - N-terminal (ab179826)

Immunohistochemical analysis of paraffin-embedded Human liver tissue labeling TOMM22/TOM22 with ab179826 at 1/1000 dilution. Perform heat mediated antigen retrieval with citrate buffer pH 6 before commencing with IHC staining protocol.



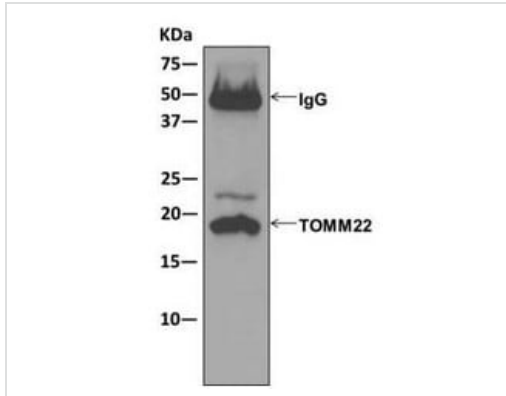
Immunohistochemistry (Formalin/PFA-fixed paraffin-embedded sections) - Anti-TOMM22/TOM22 antibody [EPR13505] - N-terminal (ab179826)

Immunohistochemical analysis of paraffin-embedded Human kidney tissue labeling TOMM22/TOM22 with ab179826 at 1/1000 dilution. Perform heat mediated antigen retrieval with citrate buffer pH 6 before commencing with IHC staining protocol.



Flow Cytometry (Intracellular) - Anti-TOMM22/TOM22 antibody [EPR13505] - N-terminal (ab179826)

Intracellular flow cytometric analysis of 293T cells labeling TOMM22/TOM22 with ab179826 at 1/10 (red) or a rabbit IgG (negative) (green).



Western blot analysis on immunoprecipitation pellet from Raji cell lysate using ab179826 at 1/10 dilution for IP.

Immunoprecipitation - Anti-TOMM22/TOM22 antibody [EPR13505] - N-terminal (ab179826)

### Why choose a recombinant antibody?

 <b>Research with confidence</b> Consistent and reproducible results	 <b>Long-term and scalable supply</b> Recombinant technology
 <b>Success from the first experiment</b> Confirmed specificity	 <b>Ethical standards compliant</b> Animal-free production

Anti-TOMM22/TOM22 antibody [EPR13505] - N-terminal (ab179826)

**Please note:** All products are "FOR RESEARCH USE ONLY. NOT FOR USE IN DIAGNOSTIC PROCEDURES"

### Our Abpromise to you: Quality guaranteed and expert technical support

- Replacement or refund for products not performing as stated on the datasheet
- Valid for 12 months from date of delivery
- Response to your inquiry within 24 hours

- We provide support in Chinese, English, French, German, Japanese and Spanish
- Extensive multi-media technical resources to help you
- We investigate all quality concerns to ensure our products perform to the highest standards

If the product does not perform as described on this datasheet, we will offer a refund or replacement. For full details of the Abpromise, please visit <https://www.abcam.com/abpromise> or contact our technical team.

### **Terms and conditions**

---

- Guarantee only valid for products bought direct from Abcam or one of our authorized distributors