


Product datasheet

Anti-TOMM40L antibody ab229725

1 Image

Overview

Product name	Anti-TOMM40L antibody
Description	Rabbit polyclonal to TOMM40L
Host species	Rabbit
Tested applications	Suitable for: ICC/IF
Species reactivity	Reacts with: Human Predicted to work with: Mouse, Rat, Cow, Rhesus monkey 
Immunogen	Recombinant fragment within Human TOMM40L (internal sequence). The exact sequence is proprietary. Database link: Q969M1
Positive control	ICC/IF: HepG2 cells.

Properties

Form	Liquid
Storage instructions	Shipped at 4°C. Store at +4°C short term (1-2 weeks). Upon delivery aliquot. Store at -20°C long term. Avoid freeze / thaw cycle.
Storage buffer	pH: 7.00 Preservative: 0.01% Thimerosal (merthiolate) Constituents: PBS, 20% Glycerol
Purity	Immunogen affinity purified
Clonality	Polyclonal
Isotype	IgG

Applications

Our [Abpromise guarantee](#) covers the use of **ab229725** in the following tested applications.

The application notes include recommended starting dilutions; optimal dilutions/concentrations should be determined by the end user.

Application	Abreviews	Notes
ICC/IF		1/100 - 1/1000.

Target

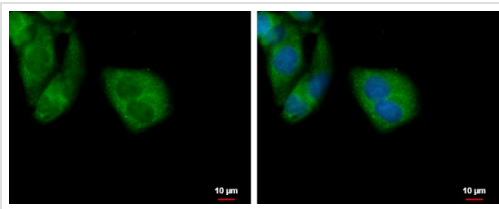
Relevance

Potential channel-forming protein implicated in import of protein precursors into mitochondria
Forms part of the preprotein translocase of the outer mitochondrial membrane (TOM complex) containing TOMM22, TOMM40, TOMM40L and TOMM70. Interacts with mitochondrial targeting sequences.

Cellular localization

Mitochondrial outer membrane

Images



Immunocytochemistry/ Immunofluorescence - Anti-TOMM40L antibody (ab229725)

2% paraformaldehyde/culture medium-fixed HepG2 (human liver hepatocellular carcinoma cell line) cells stained for TOMM40L (green) using ab229725 at 1/500 dilution in ICC/IF.

Nuclear counterstain: Hoechst 33342 (blue).

Please note: All products are "FOR RESEARCH USE ONLY. NOT FOR USE IN DIAGNOSTIC PROCEDURES"

Our Abpromise to you: Quality guaranteed and expert technical support

- Replacement or refund for products not performing as stated on the datasheet
- Valid for 12 months from date of delivery
- Response to your inquiry within 24 hours
- We provide support in Chinese, English, French, German, Japanese and Spanish
- Extensive multi-media technical resources to help you
- We investigate all quality concerns to ensure our products perform to the highest standards

If the product does not perform as described on this datasheet, we will offer a refund or replacement. For full details of the Abpromise, please visit <https://www.abcam.com/abpromise> or contact our technical team.

Terms and conditions

- Guarantee only valid for products bought direct from Abcam or one of our authorized distributors