

Product datasheet

Anti-Topoisomerase II alpha + Topoisomerase II beta/TOP2B antibody [EPR5377] ab109524

Recombinant RabMAb

★★★★★ 2 Abreviews 14 References 6 Images

Overview

Product name	Anti-Topoisomerase II alpha + Topoisomerase II beta/TOP2B antibody [EPR5377]
Description	Rabbit monoclonal [EPR5377] to Topoisomerase II alpha + Topoisomerase II beta/TOP2B
Host species	Rabbit
Tested applications	Suitable for: ICC/IF, WB, IHC-P, Flow Cyt (Intra) Unsuitable for: IP
Species reactivity	Reacts with: Mouse, Rat, Human, Recombinant fragment
Immunogen	Synthetic peptide. This information is proprietary to Abcam and/or its suppliers.
Positive control	Jurkat, K562, Raw264.7 or PC-12 cell lysate Human breast tissue IF/ICC: HeLa cell line
General notes	This product is a recombinant monoclonal antibody, which offers several advantages including: <ul style="list-style-type: none"> - High batch-to-batch consistency and reproducibility - Improved sensitivity and specificity - Long-term security of supply - Animal-free production For more information see here . Our RabMAb [®] technology is a patented hybridoma-based technology for making rabbit monoclonal antibodies. For details on our patents, please refer to RabMAb[®] patents .

Properties

Form	Liquid
Storage instructions	Shipped at 4°C. Store at +4°C short term (1-2 weeks). Upon delivery aliquot. Store at -20°C. Stable for 12 months at -20°C.
Storage buffer	pH: 7.20 Preservative: 0.05% Sodium azide Constituents: 0.1% BSA, 40% Glycerol (glycerin, glycerine), 9.85% Tris glycine, 50% Tissue culture supernatant
Purity	Protein A purified
Clonality	Monoclonal

Clone number EPR5377
Isotype IgG

Applications

The Abpromise guarantee Our [Abpromise guarantee](#) covers the use of ab109524 in the following tested applications. The application notes include recommended starting dilutions; optimal dilutions/concentrations should be determined by the end user.

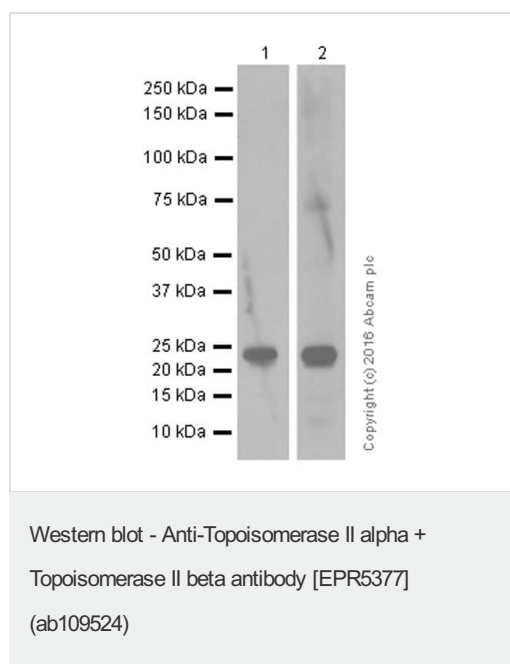
Application	Abreviews	Notes
ICC/IF		Use a concentration of 10 µg/ml.
WB	★★★★★ (2)	1/10000 - 1/50000. Detects a band of approximately 180 kDa (predicted molecular weight: 183 kDa).
IHC-P		1/100 - 1/250. Perform heat mediated antigen retrieval with citrate buffer pH 6 before commencing with IHC staining protocol.
Flow Cyt (Intra)		Use at an assay dependent concentration.

Application notes Is unsuitable for IP.

Target

Cellular localization Topoisomerase II alpha: Cytoplasm. Nucleus > nucleoplasm. Generally located in the nucleoplasm. Topoisomerase II beta: Cytoplasm. Nucleus > nucleolus.

Images



All lanes : Anti-Topoisomerase II alpha + Topoisomerase II beta/TOP2B antibody [EPR5377] (ab109524) at 1/1000 dilution

Lane 1 : ab109524 on TOP II alpha recombinant protein 10ng

Lane 2 : Anti-His rabbit serum on TOP II alpha recombinant protein 10ng

Secondary

All lanes : Goat Anti-Rabbit IgG H&L (HRP) ([ab97051](#)) at 1/20000 dilution

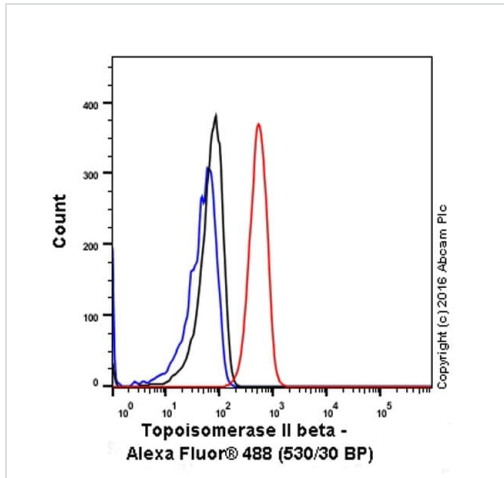
Predicted band size: 183 kDa

Observed band size: 24 kDa

Exposure time: 1 second

Blocking and diluting buffer and concentration: 5% NFDN/TBST.

TOP II alpha recombinant protein (aa 1-220) containing a his-tag.

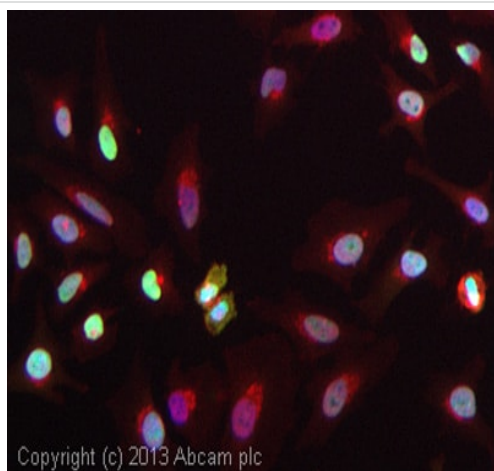


Flow Cytometry (Intracellular) - Anti-Topoisomerase II alpha + Topoisomerase II beta/TOP2B antibody [EPR5377] (ab109524)

ab109524 staining Topoisomerase II alpha + Topoisomerase II beta in the human cell line HeLa (human cervix adenocarcinoma) by intracellular flow cytometry. Cells were fixed with 4% paraformaldehyde, permeabilised with 90% methanol and the sample was incubated with the primary antibody at a dilution of 1/20. A goat anti rabbit IgG (Alexa Fluor® 488) at a dilution of 1/2000 was used as the secondary antibody.

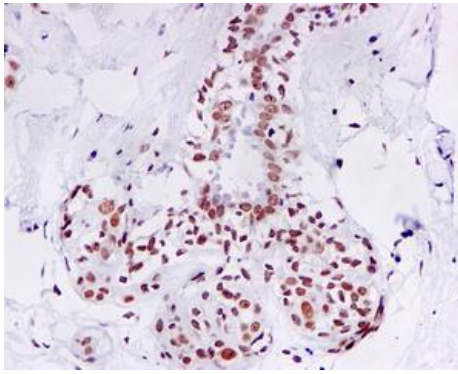
Isotype control: Rabbit monoclonal IgG (Black)

Unlabelled control: Cell without incubation with primary antibody and secondary antibody (Blue)



Immunocytochemistry/ Immunofluorescence - Anti-Topoisomerase II alpha + Topoisomerase II beta antibody [EPR5377] (ab109524)

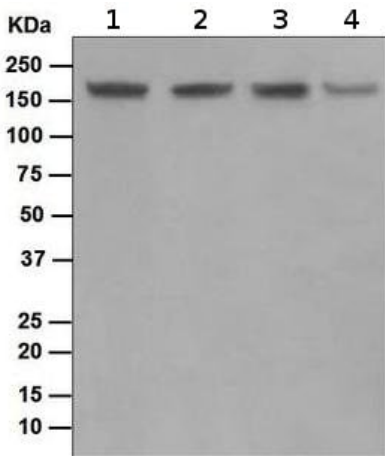
ICC/IF image of ab109524 stained HeLa cells. The cells were 4% Formaldehyde fixed (10 min) and then incubated in 1% BSA / 10% normal goat serum / 0.3M glycine in 0.1% PBS-Tween for 1h to permeabilise the cells and block non-specific protein-protein interactions. The cells were then incubated with the antibody (ab109524, 10µg/ml) overnight at +4°C. The secondary antibody (green) was ab96899, DyLight® 488 goat anti-rabbit IgG (H+L) used at a 1/250 dilution for 1h. Alexa Fluor® 594 WGA was used to label plasma membranes (red) at a 1/200 dilution for 1h. DAPI was used to stain the cell nuclei (blue) at a concentration of 1.43µM.



Immunohistochemistry (Formalin/PFA-fixed paraffin-embedded sections) - Anti-Topoisomerase II alpha + Topoisomerase II beta antibody [EPR5377] (ab109524)

ab109524, at a 1/100 dilution, staining Human Topoisomerase II alpha + Topoisomerase II beta in breast tissue, using Immunohistochemistry, Formalin/PFA-fixed paraffin-embedded tissue.

Perform heat mediated antigen retrieval with citrate buffer pH 6 before commencing with IHC staining protocol.



Western blot - Anti-Topoisomerase II alpha + Topoisomerase II beta antibody [EPR5377] (ab109524)

All lanes : Anti-Topoisomerase II alpha + Topoisomerase II beta/TOP2B antibody [EPR5377] (ab109524) at 1/50000 dilution

Lane 1 : Jurkat cell lysate

Lane 2 : K562 cell lysate

Lane 3 : Raw264.7 cell lysate

Lane 4 : PC-12 cell lysate

Lysates/proteins at 10 µg per lane.

Predicted band size: 183 kDa

Observed band size: 180 kDa

Why choose a recombinant antibody?



Research with confidence
Consistent and reproducible results



Long-term and scalable supply
Recombinant technology



Success from the first experiment
Confirmed specificity



Ethical standards compliant
Animal-free production

Anti-Topoisomerase II alpha + Topoisomerase II
beta/TOP2B antibody [EPR5377] (ab109524)

Please note: All products are "FOR RESEARCH USE ONLY. NOT FOR USE IN DIAGNOSTIC PROCEDURES"

Our Abpromise to you: Quality guaranteed and expert technical support

- Replacement or refund for products not performing as stated on the datasheet
- Valid for 12 months from date of delivery
- Response to your inquiry within 24 hours
- We provide support in Chinese, English, French, German, Japanese and Spanish
- Extensive multi-media technical resources to help you
- We investigate all quality concerns to ensure our products perform to the highest standards

If the product does not perform as described on this datasheet, we will offer a refund or replacement. For full details of the Abpromise, please visit <https://www.abcam.com/abpromise> or contact our technical team.

Terms and conditions

- Guarantee only valid for products bought direct from Abcam or one of our authorized distributors