

## Product datasheet

# Anti-Transferrin Receptor antibody [OX26] ab6331

3 Images

### Overview

---

<b>Product name</b>	Anti-Transferrin Receptor antibody [OX26]
<b>Description</b>	Mouse monoclonal [OX26] to Transferrin Receptor
<b>Host species</b>	Mouse
<b>Tested applications</b>	<b>Suitable for:</b> Flow Cyt, IHC-P
<b>Species reactivity</b>	<b>Reacts with:</b> Rat
<b>Immunogen</b>	Tissue, cells or virus corresponding to Transferrin Receptor.
<b>Positive control</b>	Flow Cyt: Lewis rat bone marrow cells. IHC-P: Mouse and rat placenta tissue.
<b>General notes</b>	<p>This antibody clone is manufactured by Abcam. If you require a custom buffer formulation or conjugation for your experiments, please contact <a href="mailto:orders@abcam.com">orders@abcam.com</a>.</p> <p>Reproducibility is key to advancing scientific discovery and accelerating scientists' next breakthrough.</p> <p>Abcam is leading the way with our range of recombinant antibodies, knockout-validated antibodies and knockout cell lines, all of which support improved reproducibility.</p> <p>We are also planning to innovate the way in which we present recommended applications and species on our product datasheets, so that only applications &amp; species that have been tested in our own labs, our suppliers or by selected trusted collaborators are covered by our Abpromise™ guarantee.</p> <p>In preparation for this, we have started to update the applications &amp; species that this product is Abpromise guaranteed for.</p> <p>We are also updating the applications &amp; species that this product has been “predicted to work with,” however this information is not covered by our Abpromise guarantee.</p> <p>Applications &amp; species from publications and Abreviews that have not been tested in our own labs or in those of our suppliers are not covered by the Abpromise guarantee.</p> <p>Please check that this product meets your needs before purchasing. If you have any questions, special requirements or concerns, please send us an inquiry and/or contact our Support team ahead of purchase. Recommended alternatives for this product can be found below, as well as customer reviews and Q&amp;As.</p>

### Properties

---

<b>Form</b>	Liquid
<b>Storage instructions</b>	Shipped at 4°C. Store at +4°C short term (1-2 weeks). Upon delivery aliquot. Store at -20°C long term. Avoid freeze / thaw cycle.
<b>Storage buffer</b>	Preservative: 0.02% Sodium azide Constituent: PBS
<b>Purity</b>	Protein G purified
<b>Clonality</b>	Monoclonal
<b>Clone number</b>	OX26
<b>Isotype</b>	IgG2a
<b>Light chain type</b>	kappa

## Applications

Our [Abpromise guarantee](#) covers the use of **ab6331** in the following tested applications.

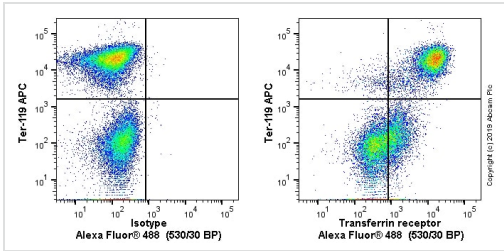
The application notes include recommended starting dilutions; optimal dilutions/concentrations should be determined by the end user.

Application	Abreviews	Notes
Flow Cyt		Use a concentration of 0.2 µg/ml.
IHC-P		Use a concentration of 5 µg/ml. Perform heat mediated antigen retrieval before commencing with IHC staining protocol.

## Target

<b>Function</b>	Cellular uptake of iron occurs via receptor-mediated endocytosis of ligand-occupied transferrin receptor into specialized endosomes. Endosomal acidification leads to iron release. The apotransferrin-receptor complex is then recycled to the cell surface with a return to neutral pH and the concomitant loss of affinity of apotransferrin for its receptor. Transferrin receptor is necessary for development of erythrocytes and the nervous system (By similarity). A second ligand, the hereditary hemochromatosis protein HFE, competes for binding with transferrin for an overlapping C-terminal binding site. Positively regulates T and B cell proliferation through iron uptake (PubMed:26642240). (Microbial infection) Acts as a receptor for new-world arenaviruses: Guanarito, Junin and Machupo virus.
<b>Involvement in disease</b>	Immunodeficiency 46
<b>Sequence similarities</b>	Belongs to the peptidase M28 family. M28B subfamily. Contains 1 PA (protease associated) domain.
<b>Post-translational modifications</b>	N- and O-glycosylated, phosphorylated and palmitoylated. The serum form is only glycosylated. Proteolytically cleaved on Arg-100 to produce the soluble serum form (sTfR). Palmitoylated on both Cys-62 and Cys-67. Cys-62 seems to be the major site of palmitoylation.
<b>Cellular localization</b>	Secreted and Cell membrane. Melanosome. Identified by mass spectrometry in melanosome fractions from stage I to stage IV.

## Images



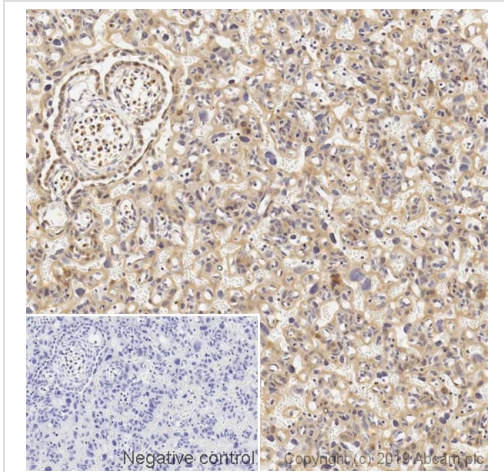
Flow Cytometry - Anti-Transferrin Receptor antibody [OX26] (ab6331)

Lewis rat bone marrow cells stained with ab6331 (right) or mouse IgG2a kappa (ab170191) isotype (left). Cells were incubated for 30 min on ice in 1x PBS containing 10 % rat serum to block FC receptors and non-specific protein-protein interaction followed by the antibody (ab6331) or mouse IgG2a kappa (ab170191) isotype (1x 10<sup>6</sup> in 100 µl at 0.2 µg/ml) for 30 min on ice.

The secondary antibody Goat anti-mouse IgG H&L (Alexa Fluor<sup>®</sup>488, pre-adsorbed) (ab150117) was used at 1/2000 dilution for 30 min on ice.

The cells were simultaneously stained with Ter-119.

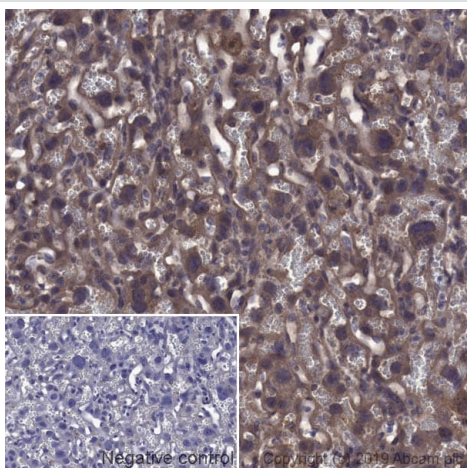
Acquisition of >30,000 events were collected using a 50 mW Blue laser (488nm) and 530/30 bandpass filter. Events were gated on live single cells.



Immunohistochemistry (Formalin/PFA-fixed paraffin-embedded sections) - Anti-Transferrin Receptor antibody [OX26] (ab6331)

IHC image of Transferrin receptor staining in a section of formalin-fixed paraffin-embedded normal rat placenta performed on a Leica BOND<sup>™</sup> system using the standard Protocol F, omitting the post-primary step. The section was pre-treated using heat mediated antigen retrieval with EDTA buffer (pH9, epitope retrieval solution 2) for 20mins. The section was then incubated with ab6331, 5µg/ml, for 15 mins at room temperature. The section was then incubated with ab98792 (Rabbit polyclonal Secondary Antibody to Mouse IgG - H&L, pre-adsorbed) 1/500 for 15 mins at room temperature and detected using an HRP conjugated compact polymer system. DAB was used as the chromogen. The section was then counterstained with hematoxylin and mounted with DPX. The inset secondary-only control image is taken from an identical assay without primary antibody.

For other IHC staining systems (automated and non-automated) customers should optimize variable parameters such as antigen retrieval conditions, primary antibody concentration and antibody incubation times.



IHC image of Transferrin receptor staining in normal mouse placenta formalin fixed paraffin embedded tissue section, using Mouse on Mouse detection kit [ab127055](#). The section was pre-treated using pressure cooker heat mediated antigen retrieval with sodium citrate buffer (pH6) for 30mins. The section was incubated with ab6331, 5µg/ml overnight at +4°C. The section was counterstained with hematoxylin and mounted with DPX. The inset secondary-only control image is taken from an identical assay without primary antibody.

Immunohistochemistry (Formalin/PFA-fixed paraffin-embedded sections) - Anti-Transferrin Receptor antibody [OX26] (ab6331)

**Please note:** All products are "FOR RESEARCH USE ONLY. NOT FOR USE IN DIAGNOSTIC PROCEDURES"

### Our Abpromise to you: Quality guaranteed and expert technical support

---

- Replacement or refund for products not performing as stated on the datasheet
- Valid for 12 months from date of delivery
- Response to your inquiry within 24 hours
- We provide support in Chinese, English, French, German, Japanese and Spanish
- Extensive multi-media technical resources to help you
- We investigate all quality concerns to ensure our products perform to the highest standards

If the product does not perform as described on this datasheet, we will offer a refund or replacement. For full details of the Abpromise, please visit <https://www.abcam.com/abpromise> or contact our technical team.

### Terms and conditions

---

- Guarantee only valid for products bought direct from Abcam or one of our authorized distributors