

Product datasheet

Anti-TRAP1 antibody ab223379

3 Images

Overview

<b>Product name</b>	Anti-TRAP1 antibody
<b>Description</b>	Rabbit polyclonal to TRAP1
<b>Host species</b>	Rabbit
<b>Tested applications</b>	<b>Suitable for:</b> WB, ICC/IF
<b>Species reactivity</b>	<b>Reacts with:</b> Human <b>Predicted to work with:</b> Mouse, Rat 
<b>Immunogen</b>	Recombinant full length protein corresponding to Human TRAP1 aa 60-704. Sequence: STQTAEDKEEPLHSIISSTESVQGSTSKHEFQAETKLLDI VARSLYSEK EVFIRELISNASDALEKLRHKLVSDGQALPEMEIHLQTNAE KGTITIQDT GIGMTQEELVSNLGTIARSGSKAFLDALQNQAEASSKIIGQ FGVGFYSAF MVADRVEVYSRSAAPGSLGYQWLSDGSGVFEIAEASGV RTGTKIIHLKS DCKEFSSEARVRDVVTKYSNFVSFPLYLNGRRMNTLQAI WMMDPKDVREW QHEEFYRYVAQAHDKPRYTLHYKTDAPLNIRSIFYVPMKP SMFDVSREL GSSVALYSRKVLIQTKATDILPKWLFIRGVVDSEDIPLNLS RELLQESA LIRKLRDVLQQRLIKFFIDQSKKDAEKYAKFFEDYGLFMRE GVTATEQE VKEDIAKLLRYESSALPSGQLTSLSEYASRMRAGTRNIYL CAPNRHLAE HSPYYEAMKKKDTEVLFCFEQFDEL TLLHLREFDKKLLIS VETDIVVDHY KEEFEDRSPAAECLSEKETEELMAWMRNVLGSRVTVN KVTLRLDTHPAM VTVLEMGAARHFLRMQQLAKTQEERAQLLQPTLEINPRHA LIKLNQLRA SEPLAQLLVDDQIYENAMIAAGLVDDPRAMVGRLNELLVK ALERH

Database link: [Q12931](#)

 [Run BLAST with](#)

 [Run BLAST with](#)

## Positive control

WB: HeLa cell lysate. ICC/IF: Heat shocked HeLa cells.

## General notes

Reproducibility is key to advancing scientific discovery and accelerating scientists' next breakthrough.

Abcam is leading the way with our range of recombinant antibodies, knockout-validated antibodies and knockout cell lines, all of which support improved reproducibility.

We are also planning to innovate the way in which we present recommended applications and species on our product datasheets, so that only applications & species that have been tested in our own labs, our suppliers or by selected trusted collaborators are covered by our Abpromise™ guarantee.

In preparation for this, we have started to update the applications & species that this product is Abpromise guaranteed for.

We are also updating the applications & species that this product has been “predicted to work with,” however this information is not covered by our Abpromise guarantee.

Applications & species from publications and Abreviews that have not been tested in our own labs or in those of our suppliers are not covered by the Abpromise guarantee.

Please check that this product meets your needs before purchasing. If you have any questions, special requirements or concerns, please send us an inquiry and/or contact our Support team ahead of purchase. Recommended alternatives for this product can be found below, as well as customer reviews and Q&As.

## Properties

<b>Form</b>	Liquid
<b>Storage instructions</b>	Shipped at 4°C. Store at +4°C short term (1-2 weeks). Upon delivery aliquot. Store at -20°C long term. Avoid freeze / thaw cycle.
<b>Storage buffer</b>	Preservative: 0.09% Sodium azide Constituents: 50% Glycerol (glycerin, glycerine), PBS
<b>Purity</b>	Protein A purified
<b>Clonality</b>	Polyclonal
<b>Isotype</b>	IgG

## Applications

Our [Abpromise guarantee](#) covers the use of **ab223379** in the following tested applications.

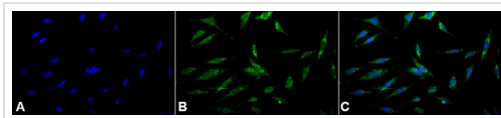
The application notes include recommended starting dilutions; optimal dilutions/concentrations should be determined by the end user.

Application	Abreviews	Notes
WB		1/1000. Detects a band of approximately 75 kDa (predicted molecular weight: 74,80 kDa).
ICC/IF		1/120.

## Target

<b>Function</b>	Chaperone that expresses an ATPase activity.
<b>Tissue specificity</b>	Found in skeletal muscle, liver, heart, brain, kidney, pancreas, lung and placenta.
<b>Sequence similarities</b>	Belongs to the heat shock protein 90 family.
<b>Cellular localization</b>	Mitochondrion.

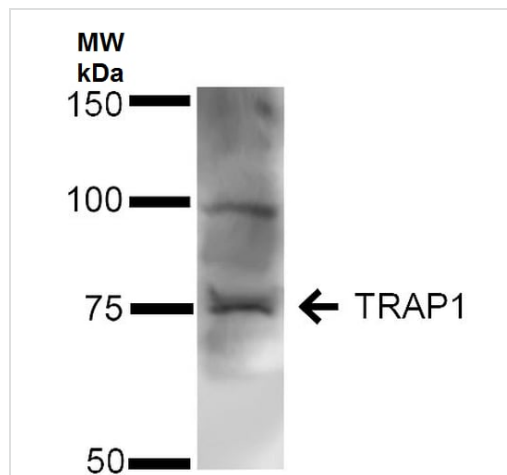
## Images



Immunocytochemistry/ Immunofluorescence - Anti-TRAP1 antibody (ab223379)

2% formaldehyde-fixed heat shocked HeLa (human epithelial cell line from cervix adenocarcinoma) cells stained for TRAP1 (green) using ab223379 at 1/120 dilution in ICC/IF. Secondary: Goat Anti-Rabbit FITC at 1/200 dilution for 2 hours at RT. Counterstain: DAPI (blue) nuclear stain at 1/40000 for 2 hours RT. Heat shocked at 42°C for 1 hour.

(A) DAPI nuclear stain (B) ab223379 (C) Merge.



Western blot - Anti-TRAP1 antibody (ab223379)

Anti-TRAP1 antibody (ab223379) at 1/1000 dilution + HeLa (human epithelial cell line from cervix adenocarcinoma) cell lysate at 12 µg

### Secondary

Goat Anti-Rabbit IgG HRP at 1/2000 dilution

Developed using the ECL technique.

**Predicted band size:** 74,80 kDa

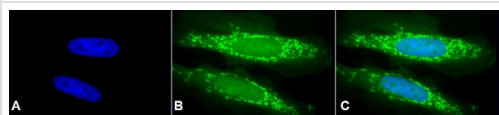
**Observed band size:** 75 kDa

[why is the actual band size different from the predicted?](#)

**Exposure time:** 5 minutes

Blocking buffer: 5% skimmed milk in TBST.

Primary antibody was incubated for 2 hours, the secondary for 1 hour at RT.



Immunocytochemistry/ Immunofluorescence - Anti-TRAP1 antibody (ab223379)

2% formaldehyde-fixed heat shocked HeLa (human epithelial cell line from cervix adenocarcinoma) cells stained for TRAP1 (green) using ab223379 at 1/120 dilution in ICC/IF. Secondary: Goat Anti-Rabbit FITC at 1/200 dilution for 2 hours at RT. Counterstain: DAPI (blue) nuclear stain at 1/40000 for 2 hours RT. Heat shocked at 42°C for 1 hour.

(A) DAPI nuclear stain (B) ab223379 (C) Merge.

**Please note:** All products are "FOR RESEARCH USE ONLY. NOT FOR USE IN DIAGNOSTIC PROCEDURES"

### Our Abpromise to you: Quality guaranteed and expert technical support

---

- Replacement or refund for products not performing as stated on the datasheet
- Valid for 12 months from date of delivery
- Response to your inquiry within 24 hours
- We provide support in Chinese, English, French, German, Japanese and Spanish
- Extensive multi-media technical resources to help you
- We investigate all quality concerns to ensure our products perform to the highest standards

If the product does not perform as described on this datasheet, we will offer a refund or replacement. For full details of the Abpromise, please visit <https://www.abcam.com/abpromise> or contact our technical team.

### Terms and conditions

---

- Guarantee only valid for products bought direct from Abcam or one of our authorized distributors