

Product datasheet

Anti-TRAP220/MED1 (phospho T1457) antibody ab60950

★★★★★ 2 Abreviews 7 References 3 Images

Overview

Product name	Anti-TRAP220/MED1 (phospho T1457) antibody
Description	Rabbit polyclonal to TRAP220/MED1 (phospho T1457)
Host species	Rabbit
Specificity	ab60950 detects endogenous levels of TRAP220/MED1 only when phosphorylated at threonine 1457.
Tested applications	Suitable for: ICC/IF, IHC-P, WB
Species reactivity	Reacts with: Mouse, Human, African green monkey
Immunogen	Synthetic phosphopeptide derived from human TRAP220/MED1 around the phosphorylation site of threonine 1457 (A-Y-T ^P -P-Q).

Properties

Form	Liquid
Storage instructions	Shipped at 4°C. Store at +4°C short term (1-2 weeks). Upon delivery aliquot. Store at -20°C. Avoid freeze / thaw cycle.
Storage buffer	pH: 7.40 Preservative: 0.02% Sodium azide Constituents: PBS, 50% Glycerol (glycerin, glycerine), 0.87% Sodium chloride Without Mg ²⁺ and Ca ²⁺
Purity	Immunogen affinity purified
Purification notes	ab60950 was affinity-purified from rabbit antiserum by affinity-chromatography using epitope-specific phosphopeptide. The antibody against non-phosphopeptide was removed by chromatography using non-phosphopeptide corresponding to the phosphorylation site.
Clonality	Polyclonal
Isotype	IgG

Applications

Our [Abpromise guarantee](#) covers the use of **ab60950** in the following tested applications.

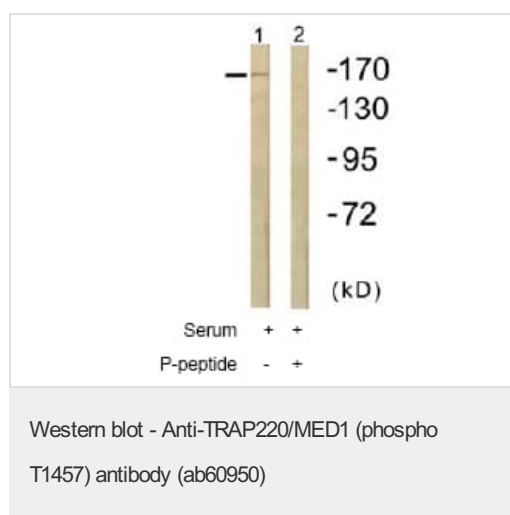
The application notes include recommended starting dilutions; optimal dilutions/concentrations should be determined by the end user.

Application	Abreviews	Notes
ICC/IF	★★★★★	1/500 - 1/1000.
IHC-P		1/50 - 1/100.
WB		1/500 - 1/1000. Detects a band of approximately 170 kDa (predicted molecular weight: 180 kDa).

Target

Function	Component of the Mediator complex, a coactivator involved in the regulated transcription of nearly all RNA polymerase II-dependent genes. Mediator functions as a bridge to convey information from gene-specific regulatory proteins to the basal RNA polymerase II transcription machinery. Mediator is recruited to promoters by direct interactions with regulatory proteins and serves as a scaffold for the assembly of a functional preinitiation complex with RNA polymerase II and the general transcription factors.
Tissue specificity	Ubiquitously expressed.
Sequence similarities	Belongs to the Mediator complex subunit 1 family.
Post-translational modifications	Phosphorylated by MAPK1 or MAPK3 during G2/M phase which may enhance protein stability and promote entry into the nucleolus. Phosphorylated upon DNA damage, probably by ATM or ATR.
Cellular localization	Nucleus. A subset of the protein may enter the nucleolus subsequent to phosphorylation by MAPK1 or MAPK3.

Images



All lanes : Anti-TRAP220/MED1 (phospho T1457) antibody (ab60950) at 1/500 dilution

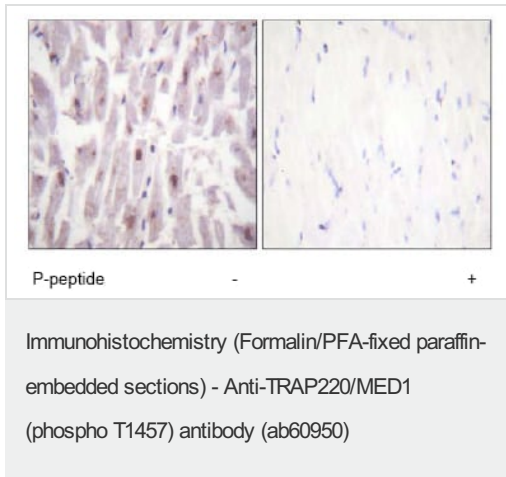
Lane 1 : HuvEc cell extracts treated with Serum (20%, 30mins)

Lane 2 : HuvEc cell extracts treated with Serum (20%, 30mins) with immunising peptide

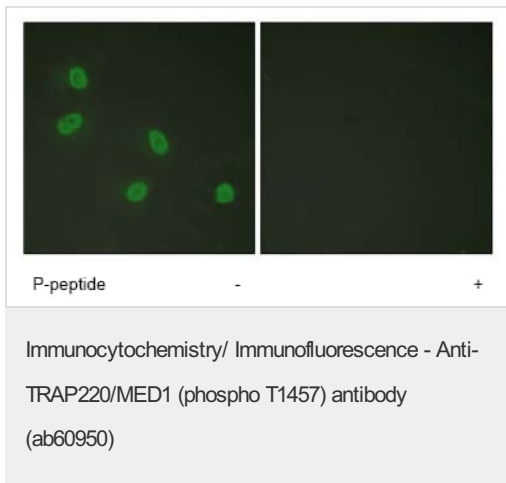
Predicted band size: 180 kDa

Observed band size: 170 kDa

[why is the actual band size different from the predicted?](#)



ab60950 at 1/50 - 1/100 dilution staining TRAP220/MED1 in human heart by Immunohistochemistry, Paraffin embedded tissue, in the absence or presence of the immunising peptide



ab60950 at 1/500 - 1/1000 dilution staining TRAP220/MED1 in HeLa cells by Immunofluorescence.

Please note: All products are "FOR RESEARCH USE ONLY. NOT FOR USE IN DIAGNOSTIC PROCEDURES"

Our Abpromise to you: Quality guaranteed and expert technical support

- Replacement or refund for products not performing as stated on the datasheet
- Valid for 12 months from date of delivery
- Response to your inquiry within 24 hours
- We provide support in Chinese, English, French, German, Japanese and Spanish
- Extensive multi-media technical resources to help you
- We investigate all quality concerns to ensure our products perform to the highest standards

If the product does not perform as described on this datasheet, we will offer a refund or replacement. For full details of the Abpromise, please visit <https://www.abcam.com/abpromise> or contact our technical team.

Terms and conditions

- Guarantee only valid for products bought direct from Abcam or one of our authorized distributors