

Product datasheet

Trichrome Stain Kit (Connective Tissue Stain) ab150686

★★★★★ 3 Abreviews 38 References 3 Images

Overview

Product name Trichrome Stain Kit (Connective Tissue Stain)

Product overview Trichrome Stain Kit (Connective Tissue Stain) ab150686 is intended for use in the histological visualization of collagenous connective tissue fibers in tissue sections.

The trichrome stain kit may be used on formalin-fixed, paraffin-embedded. For frozen sections, it will require optimization by the user.

Trichrome stain protocol summary:

- deparaffinize sections if necessary
- preheat Bouin's Fluid to 54-64°C
- incubate slide in preheated Bouin's Fluid for 60 min and cool for 10 min
- rinse in water
- incubate slide in Weigert's Iron Hematoxylin for 5 min
- rinse in water
- incubate slide in Biebrich Scarlet / Acid Fuchsin solution for 15 min
- rinse in water
- differentiate in phosphomolybdic / phosphotungstic acid solution for 10-15 min
- incubate slide in Aniline Blue solution for 5-10 min
- rinse in water
- incubate slide in acetic acid solution for 3-5 min
- dehydrate, clear and mount

Other products for staining tissue sections

Find more kits and reagents in the [special stains guide](#), or products for antigen retrieval, blocking, signal amplification, visualization, counterstaining, and mounting in the [IHC kits and reagents guide](#).

Notes

Staining Interpretation

Collagen	Blue
Muscle Fibers	Red
Nuclei	Dark Red to Black/Blue

Control Tissue: Lung, Uterus, Small Intestine, Stomach.

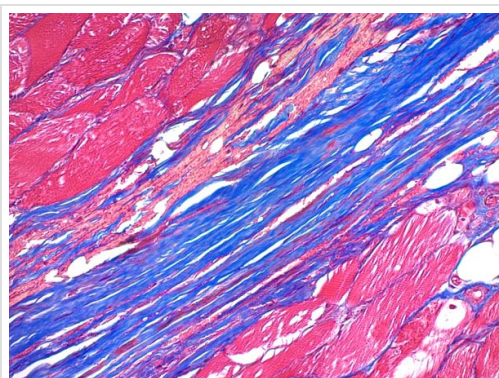
Properties

Storage instructions

Store at room temperature. Please refer to protocols.

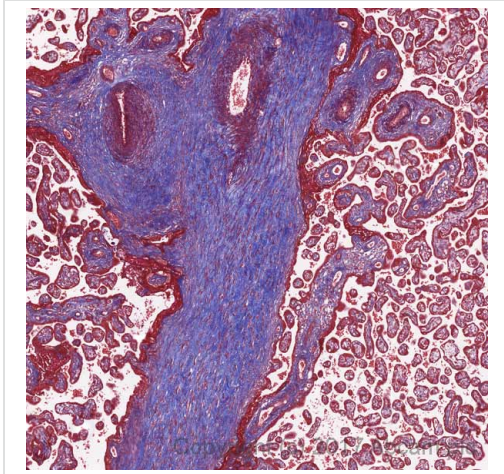
Components	100 tests
Acetic Acid Solution (1%)	1 x 125ml
Aniline Blue Solution	1 x 125ml
Biebrich Scarlet/Acid Fuchsin Solution	1 x 125ml
Bouin's Fluid	1 x 125ml
Phosphomolybdic/Phosphotungstic acid solution	1 x 125ml
Weigert's Iron, Hematoxylin (A)	1 x 125ml
Weigert's Iron, Hematoxylin (B)	1 x 125ml

Images



ab150686 Trichrome Stain Kit (Connective Tissue Stain) staining formalin-fixed-paraffin embedded human muscle.

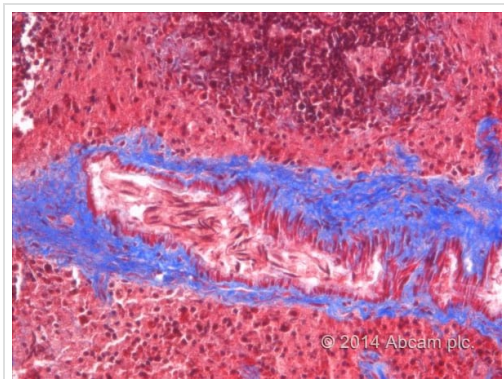
ab150686 - Trichrome Stain Kit (Connective Tissue Stain)



ab150686 (Trichrome Stain) staining collagen (blue) and muscle fibre (red) in formalin fixed paraffin embedded normal human placenta. Nuclei are counterstained with Weigert's hematoxylin (blue)

*Tissue obtained from the Human Research Tissue Bank, supported by the NIHR Cambridge Biomedical Research Centre.

ab150686 - Trichrome Stain Kit (Connective Tissue Stain)



A paraffin-embedded section of healthy mouse spleen stained with ab150686 - Trichrome Stain Kit (Connective Tissue Stain). The sample was deparaffinized by heating to 60°C for 1 hour and then deparaffinization following a standard protocol. Sections were then fixed with Bouin's solution (included in the kit) for 1 hour at 60°C in humid conditions.

ab150686 - Trichrome Stain Kit (Connective Tissue Stain)

This image is courtesy of an Abreview submitted by Javier Rodriguez

Please note: All products are "FOR RESEARCH USE ONLY. NOT FOR USE IN DIAGNOSTIC PROCEDURES"

Our Abpromise to you: Quality guaranteed and expert technical support

- Replacement or refund for products not performing as stated on the datasheet
- Valid for 12 months from date of delivery

- Response to your inquiry within 24 hours
- We provide support in Chinese, English, French, German, Japanese and Spanish
- Extensive multi-media technical resources to help you
- We investigate all quality concerns to ensure our products perform to the highest standards

If the product does not perform as described on this datasheet, we will offer a refund or replacement. For full details of the Abpromise, please visit <https://www.abcam.com/abpromise> or contact our technical team.

Terms and conditions

- Guarantee only valid for products bought direct from Abcam or one of our authorized distributors