

Product datasheet

Anti-TROP2 antibody [162-46.2] - BSA and Azide free
ab238669

4 Images

Overview

Product name	Anti-TROP2 antibody [162-46.2] - BSA and Azide free
Description	Mouse monoclonal [162-46.2] to TROP2 - BSA and Azide free
Host species	Mouse
Tested applications	Suitable for: IHC-P, Flow Cyt, ICC/IF
Species reactivity	Reacts with: Human
Immunogen	Tissue, cells or virus corresponding to Human TROP2. Human choriocarcinoma cell line BeWo.
Positive control	IHC-P: Human placenta tissue. ICC/IF: JEG3 and MCF7 cells. Flow Cyt: JEG3 and MCF7 cells.
General notes	ab238669 is a PBS only version of ab79976 . This antibody clone is manufactured by Abcam. Isotype: IgG1 (Igh-4a allotype) If you require this antibody in a particular buffer formulation or a particular conjugate for your experiments, please contact orders@abcam.com or you can find further information here .

Properties

Form	Liquid
Storage instructions	Shipped at 4°C. Store at +4°C. Do Not Freeze.
Storage buffer	Constituent: PBS
Carrier free	Yes
Purity	Immunogen affinity purified
Clonality	Monoclonal
Clone number	162-46.2
Isotype	IgG1

Applications

Our [Abpromise guarantee](#) covers the use of **ab238669** in the following tested applications.

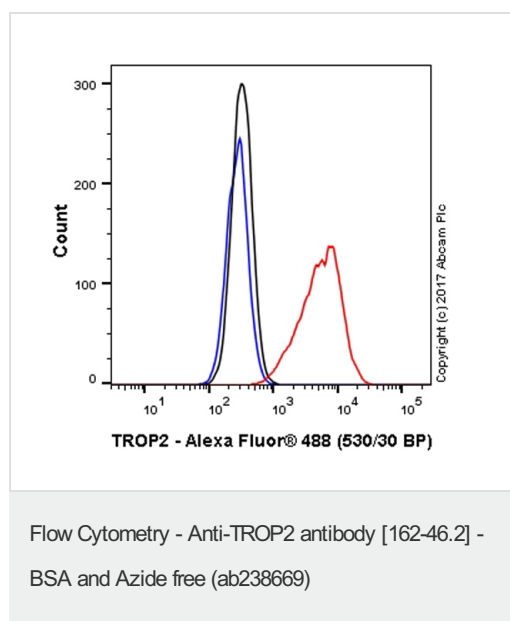
The application notes include recommended starting dilutions; optimal dilutions/concentrations should be determined by the end user.

Application	Abreviews	Notes
IHC-P		Use at an assay dependent concentration.
Flow Cyt		Use 0.1-1µg for 10 ⁶ cells. ab170190 - Mouse monoclonal IgG1, is suitable for use as an isotype control with this antibody.
ICC/IF		Use a concentration of 5 µg/ml.

Target

Function	May function as a growth factor receptor.
Tissue specificity	Placenta, pancreatic carcinoma cell lines.
Involvement in disease	Defects in TACSTD2 are the cause of gelatinous drop-like corneal dystrophy (GDLD) [MIM:204870]; also known as lattice corneal dystrophy type III. GDLD is an autosomal recessive disorder characterized by grayish corneal amyloid deposits that cause severe visual impairment.
Sequence similarities	Belongs to the EPCAM family. Contains 1 thyroglobulin type-1 domain.
Post-translational modifications	The N-terminus is blocked.
Cellular localization	Membrane.

Images



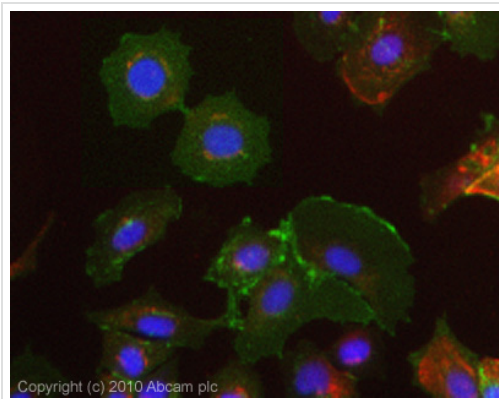
Overlay histogram showing JEG3 cells stained with [ab79976](#) (red line). The cells were fixed with 4% formaldehyde (10 min) and then permeabilized with 0.1% PBS-Triton X-100 for 15 min. The cells were then incubated in 1x PBS / 10% normal goat serum to block non-specific protein-protein interactions followed by the antibody ([ab79976](#), 0.1µg/1x10⁶ cells) for 30 min at 22°C. The secondary antibody used was Alexa Fluor[®] 488 goat anti-mouse IgG (H&L) ([ab150117](#)) at 1/2000 dilution for 30 min at 22°C.

Isotype control antibody (black line) was mouse IgG1 [15-6E10A7] (monoclonal) ([ab170190](#)) used at the same concentration and conditions as the primary antibody. Unlabelled sample (blue line) was also used as a control.

Acquisition of >5,000 events were collected using a 50 mW Blue laser (488nm) and 530/30 bandpass filter.

This antibody gave a positive signal in JEG3 cells fixed with 80% methanol (5 min)/permeabilized with 0.1% PBS-Triton X-100 for 15 min used under the same conditions.

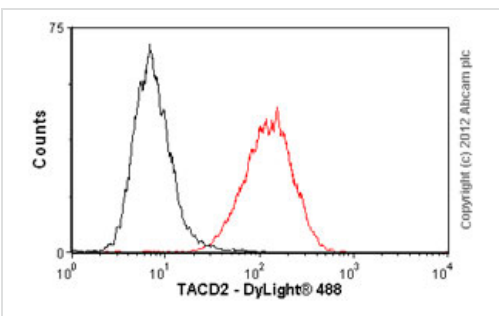
This data was developed using the same antibody clone in a different formulation containing PBS, Azide and arginine ([ab79976](#)).



Immunohistochemistry (Formalin/PFA-fixed paraffin-embedded sections) - Anti-TROP2 antibody [162-46.2] - BSA and Azide free (ab238669)

MCF7 cells stained for TROP2 (colored green) using [ab79976](#) in ICC/IF. The cells were 4% PFA fixed (10 min) and then incubated in 1%BSA / 10% normal goat serum / 0.3M glycine in 0.1% PBS-Tween for 1h to permeabilise the cells and block non-specific protein-protein interactions. The cells were then incubated with the antibody ([ab79976](#), 5µg/ml) overnight at +4°C. The secondary antibody (green) was Alexa Fluor® 488 goat anti-mouse IgG (H+L) used at a 1/1000 dilution for 1h. Alexa Fluor® 594 WGA was used to label plasma membranes (red) at a 1/200 dilution for 1h. DAPI was used to stain the cell nuclei (blue) at a concentration of 1.43µM.

This data was developed using the same antibody clone in a different formulation containing PBS, Azide and arginine ([ab79976](#)).

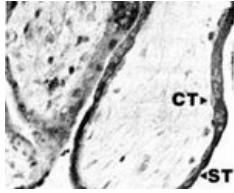


Flow Cytometry - Anti-TROP2 antibody [162-46.2] - BSA and Azide free (ab238669)

Overlay histogram showing MCF7 cells stained with [ab79976](#) (red line). The cells were fixed with 80% methanol (5 min) and incubated in 1x PBS / 10% normal goat serum / 0.3M glycine to block non-specific protein-protein interactions. The cells were then incubated with the antibody ([ab79976](#), 1µg/1x10⁶ cells) for 30 min at 22°C. The secondary antibody used was DyLight® 488 goat anti-mouse IgG (H+L) ([ab96879](#)) at 1/500 dilution for 30 min at 22°C. Isotype control antibody (black line) was mouse IgG1 [ICIGG1] ([ab91353](#), 2µg/1x10⁶ cells) used under the same conditions. Acquisition of >5,000 events was performed. This antibody gave a positive result in 4% paraformaldehyde (10 min) fixed MCF7 cells used under the same conditions.

Please note that Abcam do not have any data for use of this antibody on non-fixed cells. We welcome any customer feedback.

This data was developed using the same antibody clone in a different formulation containing PBS, Azide and arginine ([ab79976](#)).



Immunohistochemistry (Formalin/PFA-fixed paraffin-embedded sections) - Anti-TROP2 antibody [162-46.2] - BSA and Azide free (ab238669)

[ab79976](#) staining TROP2 in human 10 week placenta by Immunohistochemistry, Formalin-fixed, Paraffin-embedded tissue. Anti-mouse peroxidase IgG used as secondary antibody. Note staining of cytotrophoblast (CT) and syncytiotrophoblast (ST).

This data was developed using the same antibody clone clone in a different formulation containing PBS, Azide and arginine ([ab79976](#)).

Please note: All products are "FOR RESEARCH USE ONLY. NOT FOR USE IN DIAGNOSTIC PROCEDURES"

Our Abpromise to you: Quality guaranteed and expert technical support

- Replacement or refund for products not performing as stated on the datasheet
- Valid for 12 months from date of delivery
- Response to your inquiry within 24 hours
- We provide support in Chinese, English, French, German, Japanese and Spanish
- Extensive multi-media technical resources to help you
- We investigate all quality concerns to ensure our products perform to the highest standards

If the product does not perform as described on this datasheet, we will offer a refund or replacement. For full details of the Abpromise, please visit <https://www.abcam.com/abpromise> or contact our technical team.

Terms and conditions

- Guarantee only valid for products bought direct from Abcam or one of our authorized distributors