


Product datasheet

Anti-TROP2 antibody [SP295] ab227691

Recombinant RabMAb

[15 Images](#)

Overview

Product name	Anti-TROP2 antibody [SP295]
Description	Rabbit monoclonal [SP295] to TROP2
Host species	Rabbit
Tested applications	Suitable for: IHC-P, WB
Species reactivity	Reacts with: Human Predicted to work with: Mouse 
Immunogen	Synthetic peptide within Human TROP2 aa 100-200 (internal sequence). The exact sequence is proprietary. Database link: P09758
Positive control	WB: SK-BR-3 cell lysate. IHC-P: Human tonsil, skin, prostate, pancreas, breast, bladder, skin squamous cell carcinoma, prostate adenocarcinoma, lung squamous cell carcinoma, breast ductal cell carcinoma and bladder transitional cell carcinoma tissues.
General notes	<p>FOR RESEARCH USE ONLY. For commercial use, please contact partnerships@abcam.com.</p> <p>Reproducibility is key to advancing scientific discovery and accelerating scientists' next breakthrough.</p> <p>Abcam is leading the way with our range of recombinant antibodies, knockout-validated antibodies and knockout cell lines, all of which support improved reproducibility.</p> <p>We are also planning to innovate the way in which we present recommended applications and species on our product datasheets, so that only applications & species that have been tested in our own labs, our suppliers or by selected trusted collaborators are covered by our Abpromise™ guarantee.</p> <p>In preparation for this, we have started to update the applications & species that this product is Abpromise guaranteed for.</p> <p>We are also updating the applications & species that this product has been "predicted to work with," however this information is not covered by our Abpromise guarantee.</p> <p>Applications & species from publications and Abreviews that have not been tested in our own labs or in those of our suppliers are not covered by the Abpromise guarantee.</p> <p>Please check that this product meets your needs before purchasing. If you have any questions, special requirements or concerns, please send us an inquiry and/or contact our Support team ahead of purchase. Recommended alternatives for this product can be found below, as well as</p>

customer reviews and Q&As.

Properties

Form	Liquid
Storage instructions	Shipped at 4°C. Store at +4°C short term (1-2 weeks). Upon delivery aliquot. Store at -20°C long term. Avoid freeze / thaw cycle.
Storage buffer	pH: 7.20 Preservative: 0.1% Sodium azide Constituents: PBS, 1% BSA
Purity	Protein A/G purified
Purification notes	Purified from TCS by protein A/G.
Clonality	Monoclonal
Clone number	SP295
Isotype	IgG

Applications

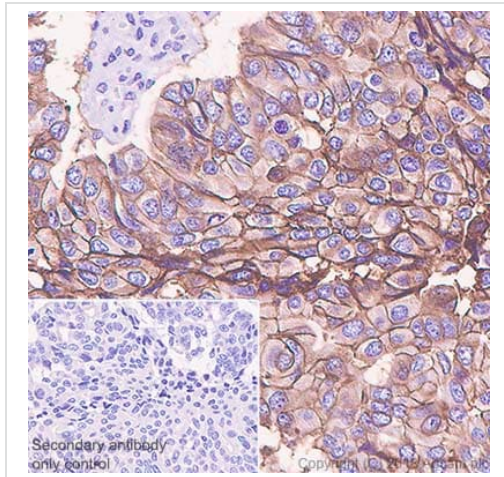
Our [Abpromise guarantee](#) covers the use of **ab227691** in the following tested applications.

The application notes include recommended starting dilutions; optimal dilutions/concentrations should be determined by the end user.

Application	Abreviews	Notes
IHC-P		1/100. Boil tissue section in EDTA buffer, pH 8.0 for 10 minutes followed by cooling at room temperature for 20 minutes. Primary incubation for 10 minutes at room temperature.
WB		1/100. Predicted molecular weight: 36 kDa. Primary incubation for 1 hour at room temperature.

Target

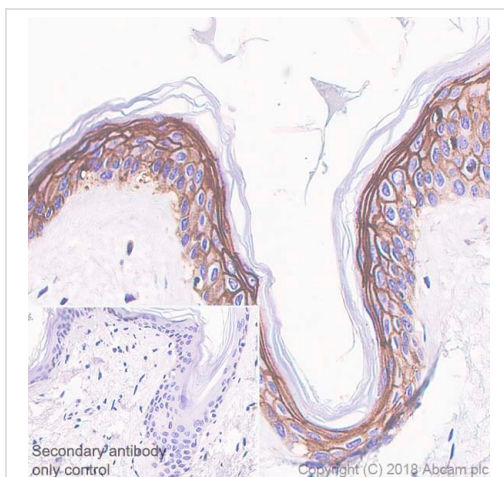
Function	May function as a growth factor receptor.
Tissue specificity	Placenta, pancreatic carcinoma cell lines.
Involvement in disease	Defects in TACSTD2 are the cause of gelatinous drop-like corneal dystrophy (GDLD) [MIM:204870]; also known as lattice corneal dystrophy type III. GDLD is an autosomal recessive disorder characterized by grayish corneal amyloid deposits that cause severe visual impairment.
Sequence similarities	Belongs to the EPCAM family. Contains 1 thyroglobulin type-1 domain.
Post-translational modifications	The N-terminus is blocked.
Cellular localization	Membrane.



Immunohistochemistry (Formalin/PFA-fixed paraffin-embedded sections) - Anti-TROP2 antibody [SP295] (ab227691)

Immunohistochemistry (Formalin/PFA-fixed paraffin-embedded sections) analysis of Human bladder carcinoma tissue sections labeling TROP2 with ab227691 at 1/100 dilution (1.01 µg/ml). Heat mediated antigen retrieval with Bond™ Epitope Retrieval Solution 2 (pH 9.0) for 10mins. Rabbit specific IHC polymer detection kit HRP/DAB was used as the secondary antibody. Hematoxylin was used as a counterstain. Membranous staining on the human bladder carcinoma, performed on a Leica Biosystems BOND™ RX instrument.

The section was incubated with [ab228199](#) for 10 mins at room temperature.



Immunohistochemistry (Formalin/PFA-fixed paraffin-embedded sections) - Anti-TROP2 antibody [SP295] (ab227691)

Immunohistochemistry (Formalin/PFA-fixed paraffin-embedded sections) analysis of Human skin tissue sections labeling TROP2 with ab227691 at 1:100 dilution (1.01 µg/ml). Heat mediated antigen retrieval with Bond™ Epitope Retrieval Solution 2 (pH 9.0) for 10mins. Rabbit specific IHC polymer detection kit HRP/DAB was used as the secondary antibody. Hematoxylin was used as a counterstain. Membranous staining on the human skin, performed on a Leica Biosystems BOND™ RX instrument.

The section was incubated with [ab228199](#) for 10 mins at room temperature.

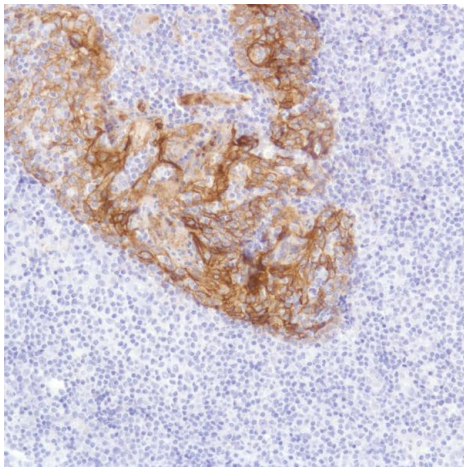
250-
150-
100-
75-
50-
37-
25-
20-
15-



Anti-TROP2 antibody [SP295] (ab227691) at 1/100 dilution + SK-BR-3 (Human mammary gland adenocarcinoma cell line) cell lysate

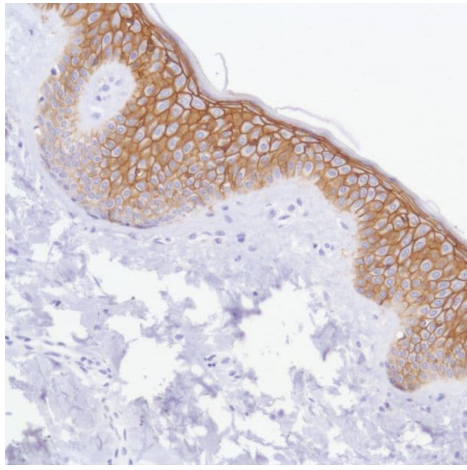
Predicted band size: 36 kDa

Western blot - Anti-TROP2 antibody [SP295]
(ab227691)



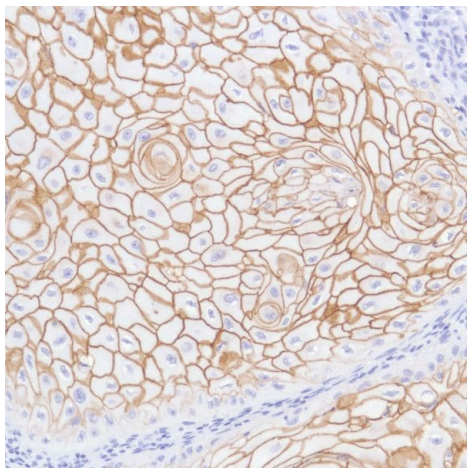
Formalin-fixed, paraffin-embedded human tonsil tissue stained for TROP2 using ab227691 at a 1/100 dilution in immunohistochemical analysis.

Immunohistochemistry (Formalin/PFA-fixed paraffin-embedded sections) - Anti-TROP2 antibody [SP295]
(ab227691)



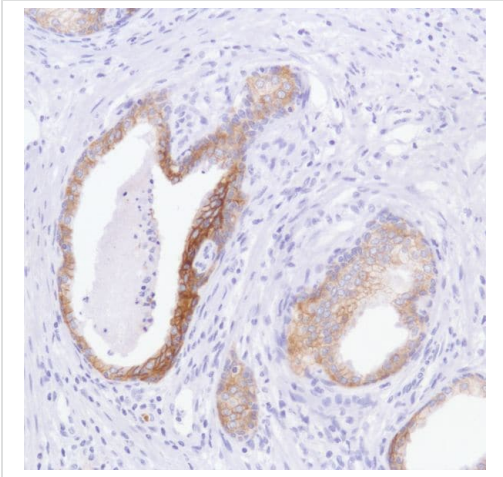
Immunohistochemistry (Formalin/PFA-fixed paraffin-embedded sections) - Anti-TROP2 antibody [SP295] (ab227691)

Formalin-fixed, paraffin-embedded human skin tissue stained for TROP2 using ab227691 at a 1/100 dilution in immunohistochemical analysis.



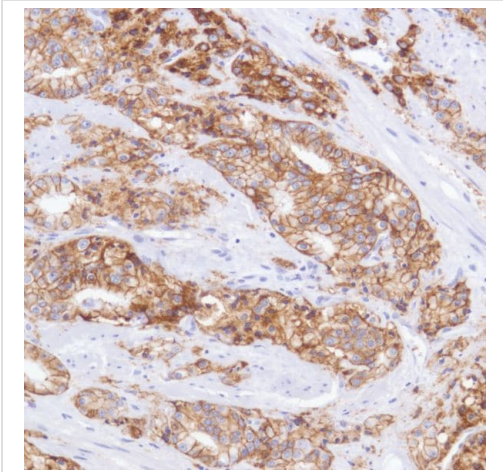
Immunohistochemistry (Formalin/PFA-fixed paraffin-embedded sections) - Anti-TROP2 antibody [SP295] (ab227691)

Formalin-fixed, paraffin-embedded human skin squamous cell carcinoma tissue stained for TROP2 using ab227691 at a 1/100 dilution in immunohistochemical analysis.



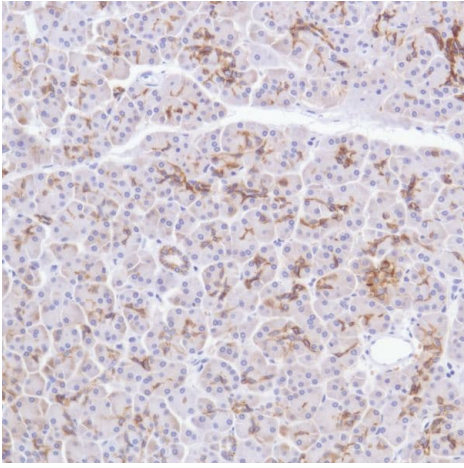
Immunohistochemistry (Formalin/PFA-fixed paraffin-embedded sections) - Anti-TROP2 antibody [SP295] (ab227691)

Formalin-fixed, paraffin-embedded human prostate tissue stained for TROP2 using ab227691 at a 1/100 dilution in immunohistochemical analysis.



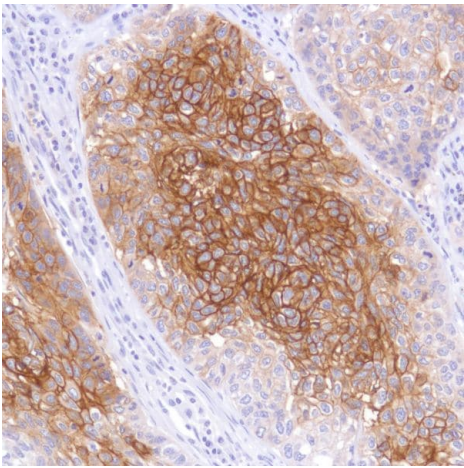
Immunohistochemistry (Formalin/PFA-fixed paraffin-embedded sections) - Anti-TROP2 antibody [SP295] (ab227691)

Formalin-fixed, paraffin-embedded human prostate adenocarcinoma tissue stained for TROP2 using ab227691 at a 1/100 dilution in immunohistochemical analysis.



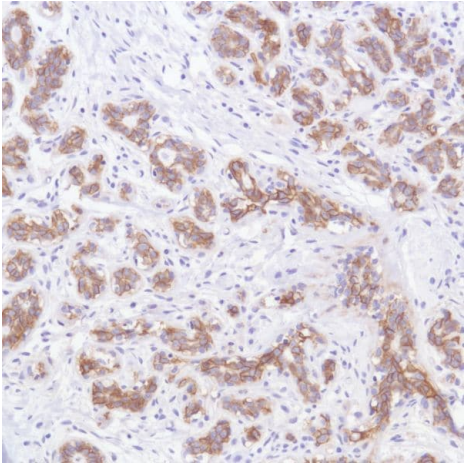
Immunohistochemistry (Formalin/PFA-fixed paraffin-embedded sections) - Anti-TROP2 antibody [SP295] (ab227691)

Formalin-fixed, paraffin-embedded human pancreas tissue stained for TROP2 using ab227691 at a 1/100 dilution in immunohistochemical analysis.



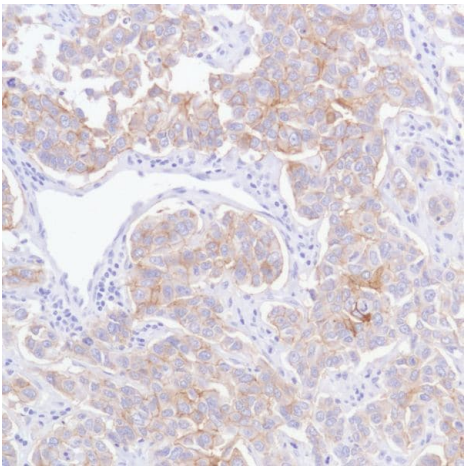
Immunohistochemistry (Formalin/PFA-fixed paraffin-embedded sections) - Anti-TROP2 antibody [SP295] (ab227691)

Formalin-fixed, paraffin-embedded human lung squamous cell carcinoma tissue stained for TROP2 using ab227691 at a 1/100 dilution in immunohistochemical analysis.



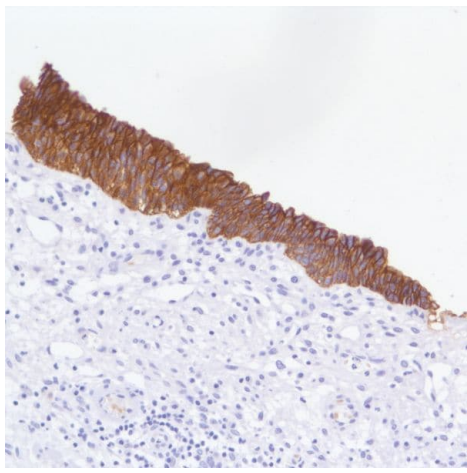
Formalin-fixed, paraffin-embedded human breast tissue stained for TROP2 using ab227691 at a 1/100 dilution in immunohistochemical analysis.

Immunohistochemistry (Formalin/PFA-fixed paraffin-embedded sections) - Anti-TROP2 antibody [SP295] (ab227691)



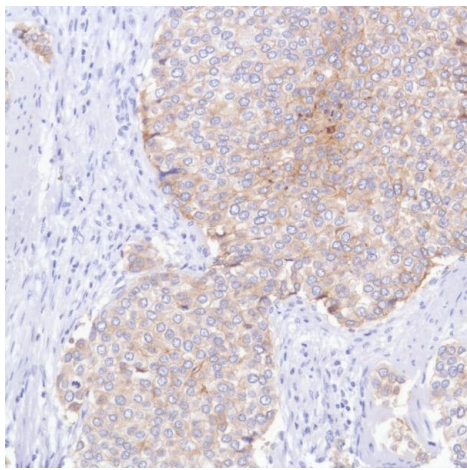
Formalin-fixed, paraffin-embedded human breast ductal cell carcinoma tissue stained for TROP2 using ab227691 at a 1/100 dilution in immunohistochemical analysis.

Immunohistochemistry (Formalin/PFA-fixed paraffin-embedded sections) - Anti-TROP2 antibody [SP295] (ab227691)



Immunohistochemistry (Formalin/PFA-fixed paraffin-embedded sections) - Anti-TROP2 antibody [SP295] (ab227691)

Formalin-fixed, paraffin-embedded human bladder tissue stained for TROP2 using ab227691 at a 1/100 dilution in immunohistochemical analysis.



Immunohistochemistry (Formalin/PFA-fixed paraffin-embedded sections) - Anti-TROP2 antibody [SP295] (ab227691)

Formalin-fixed, paraffin-embedded human bladder transitional cell carcinoma tissue stained for TROP2 using ab227691 at a 1/100 dilution in immunohistochemical analysis.

Why choose a recombinant antibody?



Research with confidence
Consistent and reproducible results



Long-term and scalable supply
Recombinant technology



Success from the first experiment
Confirmed specificity



Ethical standards compliant
Animal-free production

Anti-TROP2 antibody [SP295] (ab227691)

Please note: All products are "FOR RESEARCH USE ONLY. NOT FOR USE IN DIAGNOSTIC PROCEDURES"

Our Abpromise to you: Quality guaranteed and expert technical support

- Replacement or refund for products not performing as stated on the datasheet
- Valid for 12 months from date of delivery
- Response to your inquiry within 24 hours

- We provide support in Chinese, English, French, German, Japanese and Spanish
- Extensive multi-media technical resources to help you
- We investigate all quality concerns to ensure our products perform to the highest standards

If the product does not perform as described on this datasheet, we will offer a refund or replacement. For full details of the Abpromise, please visit <https://www.abcam.com/abpromise> or contact our technical team.

Terms and conditions

- Guarantee only valid for products bought direct from Abcam or one of our authorized distributors