

## Product datasheet

# Anti-Tropomodulin 2 antibody [EPR6353] ab124833

Recombinant RabMAb

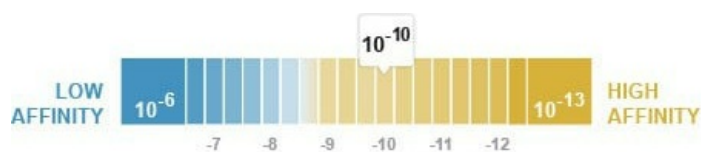
★★★★☆ 2 Abreviews 1 References 4 Images

### Overview

<b>Product name</b>	Anti-Tropomodulin 2 antibody [EPR6353]
<b>Description</b>	Rabbit monoclonal [EPR6353] to Tropomodulin 2
<b>Host species</b>	Rabbit
<b>Tested applications</b>	<b>Suitable for:</b> WB, IHC-P <b>Unsuitable for:</b> Flow Cyt
<b>Species reactivity</b>	<b>Reacts with:</b> Human <b>Predicted to work with:</b> Mouse, Rat
<b>Immunogen</b>	Synthetic peptide within Human Tropomodulin 2 (N terminal). The exact sequence is proprietary.
<b>Positive control</b>	Fetal brain and SH-SY5Y cell lysates; Human brain tissue.
<b>General notes</b>	This product is a recombinant monoclonal antibody, which offers several advantages including: <ul style="list-style-type: none"> <li>- High batch-to-batch consistency and reproducibility</li> <li>- Improved sensitivity and specificity</li> <li>- Long-term security of supply</li> <li>- Animal-free production</li> </ul> For more information <a href="#">see here</a> . Our RabMAb <sup>®</sup> technology is a patented hybridoma-based technology for making rabbit monoclonal antibodies. For details on our patents, please refer to <a href="#">RabMAb<sup>®</sup> patents</a> .

### Properties

<b>Form</b>	Liquid
<b>Storage instructions</b>	Shipped at 4°C. Store at -20°C. Stable for 12 months at -20°C.
<b>Dissociation constant (K<sub>D</sub>)</b>	K <sub>D</sub> = 1.28 x 10 <sup>-10</sup> M



[Learn more about K<sub>D</sub>](#)

<b>Storage buffer</b>	pH: 7.20 Preservative: 0.05% Sodium azide
-----------------------	--

Constituents: 40% Glycerol (glycerin, glycerine), 9.85% Tris glycine, 50% Tissue culture supernatant

<b>Purity</b>	Protein A purified
<b>Clonality</b>	Monoclonal
<b>Clone number</b>	EPR6353
<b>Isotype</b>	IgG

## Applications

**The Abpromise guarantee** Our [Abpromise guarantee](#) covers the use of ab124833 in the following tested applications. The application notes include recommended starting dilutions; optimal dilutions/concentrations should be determined by the end user.

Application	Abreviews	Notes
WB	★★★★★ (1)	1/10000 - 1/50000. Detects a band of approximately 40 kDa (predicted molecular weight: 40 kDa).
IHC-P		1/250 - 1/500. Perform heat mediated antigen retrieval before commencing with IHC staining protocol.

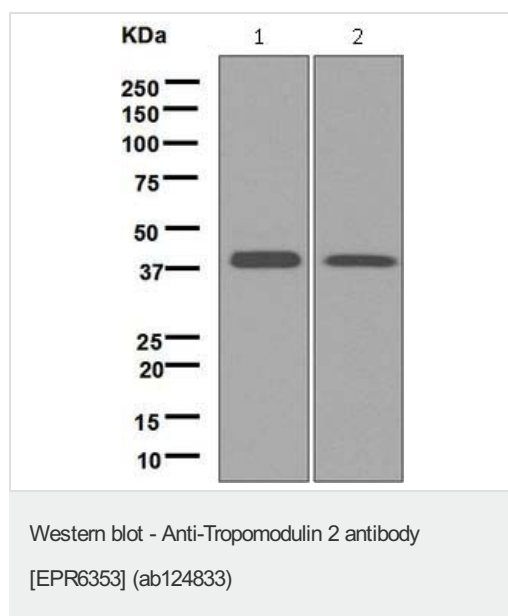
**Application notes** Is unsuitable for Flow Cyt.

## Target

**Relevance** Tropomodulin is the actin-capping protein for the slow growing end of filamentous actin. Tropomodulin 2 is a neuronal specific isoform which is the major binding protein to brain tropomyosin in rat.

**Cellular localization** Cytoplasm; cytoskeleton

## Images



**All lanes** : Anti-Tropomodulin 2 antibody [EPR6353] (ab124833) at 1/10000 dilution

**Lane 1** : Fetal brain lysate

**Lane 2** : SH-SY5Y cell lysate

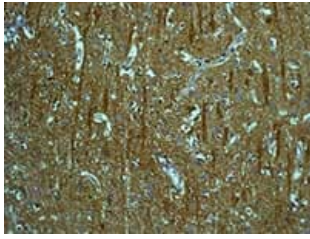
Lysates/proteins at 10 µg per lane.

**Secondary**

**All lanes** : HRP labelled goat anti-rabbit at 1/2000 dilution

**Predicted band size:** 40 kDa

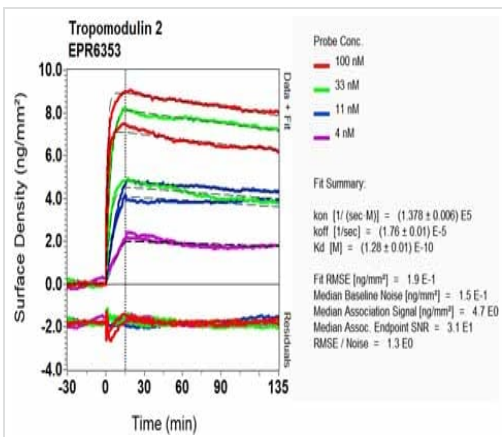
**Observed band size:** 40 kDa



Immunohistochemistry (Formalin/PFA-fixed paraffin-embedded sections) - Anti-Tropomodulin 2 antibody [EPR6353] (ab124833)

ab124833, at 1/250 dilution, staining Tropomodulin 2 in paraffin-embedded Human brain tissue by Immunohistochemistry.

Perform heat mediated antigen retrieval before commencing with IHC staining protocol.



OIR-D Scanning - Anti-Tropomodulin 2 antibody [EPR6353] (ab124833)

Equilibrium dissociation constant ( $K_D$ )

Learn more about  $K_D$

[Click here to learn more about  \$K\_D\$](#)

### Why choose a recombinant antibody?

- Research with confidence**  
Consistent and reproducible results
- Long-term and scalable supply**  
Recombinant technology
- Success from the first experiment**  
Confirmed specificity
- Ethical standards compliant**  
Animal-free production

Anti-Tropomodulin 2 antibody [EPR6353] (ab124833)

**Please note:** All products are "FOR RESEARCH USE ONLY. NOT FOR USE IN DIAGNOSTIC PROCEDURES"

**Our Abpromise to you: Quality guaranteed and expert technical support**

- Replacement or refund for products not performing as stated on the datasheet
- Valid for 12 months from date of delivery
- Response to your inquiry within 24 hours
  
- We provide support in Chinese, English, French, German, Japanese and Spanish
- Extensive multi-media technical resources to help you
- We investigate all quality concerns to ensure our products perform to the highest standards

If the product does not perform as described on this datasheet, we will offer a refund or replacement. For full details of the Abpromise, please visit <https://www.abcam.com/abpromise> or contact our technical team.

## **Terms and conditions**

---

- Guarantee only valid for products bought direct from Abcam or one of our authorized distributors