




Product datasheet

Anti-TROVE2/SS-A antibody ab219973

2 Images

Overview

Product name	Anti-TROVE2/SS-A antibody
Description	Rabbit polyclonal to TROVE2/SS-A
Host species	Rabbit
Tested applications	Suitable for: ICC/IF, WB
Species reactivity	Reacts with: Human Predicted to work with: Mouse 
Immunogen	Recombinant fragment corresponding to Human TROVE2/SS-A aa 371-506. Sequence: FLLAVDVSASMNQRVLGSILNASTVAAAMCMVVTRTE KDSYVVAFSDEM PCPVTTDMLQQVLMAMSQIPAGGTDCSLPMWAQKT NTPADVFMFTDN ETFAGGVHPAIALREYRKKMDIPAKLMCGMTSNGF Database link: P10155  Run BLAST with  Run BLAST with
Positive control	WB: RT-4 and U-251 MG cell lysate; human liver and tonsil tissue lysate. ICC/IF: U-251 MG cells.
General notes	Protein previously labeled as TROVE2.

Properties

Form	Liquid
Storage instructions	Shipped at 4°C. Store at +4°C short term (1-2 weeks). Upon delivery aliquot. Store at -20°C long term. Avoid freeze / thaw cycle.
Storage buffer	pH: 7.20 Preservative: 0.02% Sodium azide Constituents: 40% Glycerol, PBS
Purity	Immunogen affinity purified
Clonality	Polyclonal
Isotype	IgG

Applications

Our [Abpromise guarantee](#) covers the use of **ab219973** in the following tested applications.

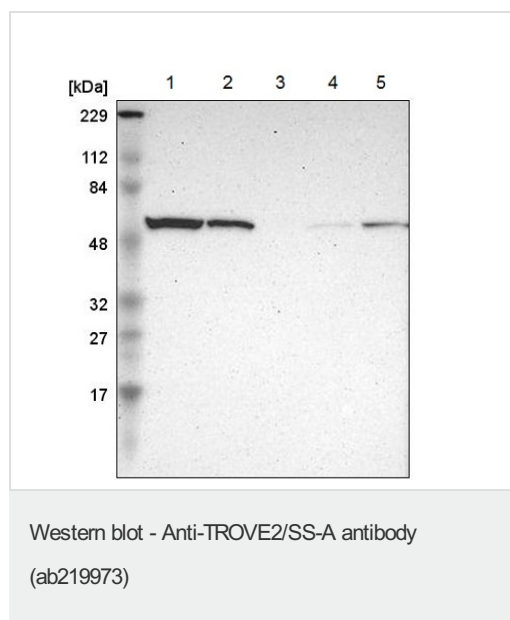
The application notes include recommended starting dilutions; optimal dilutions/concentrations should be determined by the end user.

Application	Abreviews	Notes
ICC/IF		Use a concentration of 1 - 4 µg/ml. Fixation/Permeabilization: PFA/Triton X-100
WB		1/100 - 1/250. Predicted molecular weight: 61 kDa.

Target

Function	RNA-binding protein that binds to several small cytoplasmic RNA molecules known as Y RNAs. May stabilize these RNAs from degradation.
Sequence similarities	Belongs to the Ro 60 kDa family. Contains 1 TROVE domain.
Post-translational modifications	Phosphorylated upon DNA damage, probably by ATM or ATR.
Cellular localization	Cytoplasm. Localized in cytoplasmic mRNP granules containing untranslated mRNAs.

Images



All lanes : Anti-TROVE2/SS-A antibody (ab219973) at 1/100 dilution

Lane 1 : RT-4 cell line lysate

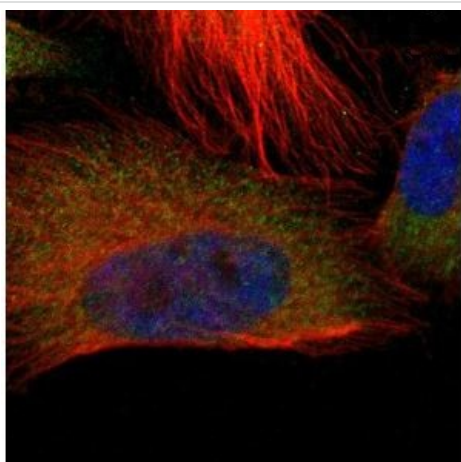
Lane 2 : U-251 MG cell line lysate

Lane 3 : Human plasma lysate

Lane 4 : Human liver tissue lysate

Lane 5 : Human tonsil tissue lysate

Predicted band size: 61 kDa



Immunofluorescent analysis of paraformaldehyde-fixed, Triton X-100 permeabilized U-251 MG cells labeling TROVE2/SS-A with ab219973 at 4 µg/mL dilution (green).

Immunocytochemistry/ Immunofluorescence - Anti-TROVE2/SS-A antibody (ab219973)

Please note: All products are "FOR RESEARCH USE ONLY. NOT FOR USE IN DIAGNOSTIC PROCEDURES"

Our Abpromise to you: Quality guaranteed and expert technical support

- Replacement or refund for products not performing as stated on the datasheet
- Valid for 12 months from date of delivery
- Response to your inquiry within 24 hours
- We provide support in Chinese, English, French, German, Japanese and Spanish
- Extensive multi-media technical resources to help you
- We investigate all quality concerns to ensure our products perform to the highest standards

If the product does not perform as described on this datasheet, we will offer a refund or replacement. For full details of the Abpromise, please visit <https://www.abcam.com/abpromise> or contact our technical team.

Terms and conditions

- Guarantee only valid for products bought direct from Abcam or one of our authorized distributors