


Product datasheet

Anti-TRPC6 antibody ab101622

1 References 1 Image

Overview

---

<b>Product name</b>	Anti-TRPC6 antibody
<b>Description</b>	Rabbit polyclonal to TRPC6
<b>Host species</b>	Rabbit
<b>Tested applications</b>	<b>Suitable for:</b> WB
<b>Species reactivity</b>	<b>Reacts with:</b> Mouse, Rat <b>Predicted to work with:</b> Horse, Cow 
<b>Immunogen</b>	Synthetic peptide corresponding to Mouse TRPC6 aa 1-100 conjugated to keyhole limpet haemocyanin. (Peptide available as <a href="#">ab116183</a> )
<b>Positive control</b>	This antibody gave a positive signal in the following tissue lysates: Mouse lung; Mouse kidney; Rat brain.
<b>General notes</b>	<p>Reproducibility is key to advancing scientific discovery and accelerating scientists' next breakthrough.</p> <p>Abcam is leading the way with our range of recombinant antibodies, knockout-validated antibodies and knockout cell lines, all of which support improved reproducibility.</p> <p>We are also planning to innovate the way in which we present recommended applications and species on our product datasheets, so that only applications &amp; species that have been tested in our own labs, our suppliers or by selected trusted collaborators are covered by our Abpromise™ guarantee.</p> <p>In preparation for this, we have started to update the applications &amp; species that this product is Abpromise guaranteed for.</p> <p>We are also updating the applications &amp; species that this product has been “predicted to work with,” however this information is not covered by our Abpromise guarantee.</p> <p>Applications &amp; species from publications and Abreviews that have not been tested in our own labs or in those of our suppliers are not covered by the Abpromise guarantee.</p> <p>Please check that this product meets your needs before purchasing. If you have any questions, special requirements or concerns, please send us an inquiry and/or contact our Support team ahead of purchase. Recommended alternatives for this product can be found below, as well as customer reviews and Q&amp;As.</p>

Properties

---

<b>Form</b>	Liquid
<b>Storage instructions</b>	Shipped at 4°C. Store at +4°C short term (1-2 weeks). Upon delivery aliquot. Store at -20°C or -80°C. Avoid freeze / thaw cycle.
<b>Storage buffer</b>	pH: 7.40 Preservative: 0.02% Sodium azide Constituent: PBS
	Batches of this product that have a concentration < 1mg/ml may have BSA added as a stabilising agent. If you would like information about the formulation of a specific lot, please contact our scientific support team who will be happy to help.
<b>Purity</b>	Immunogen affinity purified
<b>Clonality</b>	Polyclonal
<b>Isotype</b>	IgG

## Applications

Our [Abpromise guarantee](#) covers the use of **ab101622** in the following tested applications.

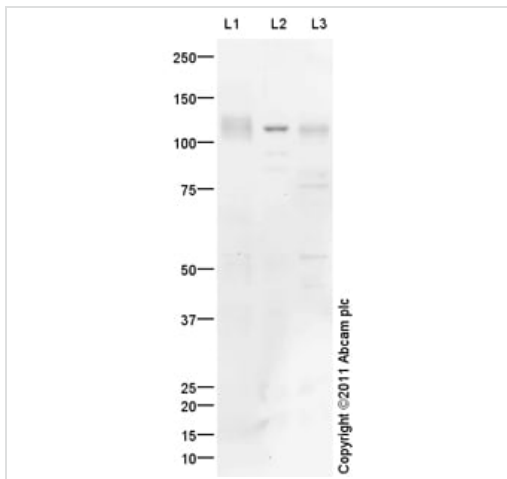
The application notes include recommended starting dilutions; optimal dilutions/concentrations should be determined by the end user.

Application	Abreviews	Notes
WB		Use a concentration of 1 µg/ml. Detects a band of approximately 110 kDa (predicted molecular weight: 107 kDa).

## Target

<b>Function</b>	Thought to form a receptor-activated non-selective calcium permeant cation channel. Probably is operated by a phosphatidylinositol second messenger system activated by receptor tyrosine kinases or G-protein coupled receptors. Activated by diacylglycerol (DAG) in a membrane-delimited fashion, independently of protein kinase C. Seems not to be activated by intracellular calcium store depletion.
<b>Tissue specificity</b>	Expressed primarily in placenta, lung, spleen, ovary and small intestine. Expressed in podocytes and is a component of the glomerular slit diaphragm.
<b>Involvement in disease</b>	Defects in TRPC6 are the cause of focal segmental glomerulosclerosis type 2 (FSGS2) [MIM:603965]. A renal pathology defined by the presence of segmental sclerosis in glomeruli and resulting in proteinuria, reduced glomerular filtration rate and edema. Renal insufficiency often progresses to end-stage renal disease, a highly morbid state requiring either dialysis therapy or kidney transplantation.
<b>Sequence similarities</b>	Belongs to the transient receptor (TC 1.A.4) family. STrpC subfamily. TRPC6 sub-subfamily. Contains 4 ANK repeats.
<b>Cellular localization</b>	Membrane.

## Images



Western blot - Anti-TRPC6 antibody (ab101622)

**All lanes :** Anti-TRPC6 antibody (ab101622) at 1 µg/ml

**Lane 1 :** Mouse lung normal tissue lysate - total protein (ab29297)

**Lane 2 :** Kidney (Mouse) Tissue Lysate

**Lane 3 :** Brain (Rat) Tissue Lysate

Lysates/proteins at 10 µg per lane.

**Secondary**

**All lanes :** Goat Anti-Rabbit IgG H&L (HRP) preadsorbed (ab97080) at 1/5000 dilution

Developed using the ECL technique.

Performed under reducing conditions.

**Predicted band size:** 107 kDa

**Observed band size:** 110 kDa

[why is the actual band size different from the predicted?](#)

**Additional bands at:** 55 kDa, 75 kDa. We are unsure as to the identity of these extra bands.

**Exposure time:** 20 minutes

RPC6 contains a potential glycosylation site (SwissProt) which may explain the higher migration pattern observed. Abcam recommends using milk as the blocking agent. Abcam welcomes customer feedback and would appreciate any comments regarding this product and the data presented above.

**Please note:** All products are "FOR RESEARCH USE ONLY. NOT FOR USE IN DIAGNOSTIC PROCEDURES"

**Our Abpromise to you: Quality guaranteed and expert technical support**

- Replacement or refund for products not performing as stated on the datasheet
- Valid for 12 months from date of delivery
- Response to your inquiry within 24 hours
- We provide support in Chinese, English, French, German, Japanese and Spanish
- Extensive multi-media technical resources to help you
- We investigate all quality concerns to ensure our products perform to the highest standards

If the product does not perform as described on this datasheet, we will offer a refund or replacement. For full details of the Abpromise,

please visit <https://www.abcam.com/abpromise> or contact our technical team.

## **Terms and conditions**

---

- Guarantee only valid for products bought direct from Abcam or one of our authorized distributors