

Product datasheet

Anti-TRPM1 antibody ab219965

1 Image

Overview

<b>Product name</b>	Anti-TRPM1 antibody
<b>Description</b>	Rabbit polyclonal to TRPM1
<b>Host species</b>	Rabbit
<b>Tested applications</b>	<b>Suitable for:</b> IHC-P
<b>Species reactivity</b>	<b>Reacts with:</b> Human
<b>Immunogen</b>	Recombinant fragment corresponding to Human TRPM1 aa 1253-1365. Sequence:  CEATYLLRQSSINSADGYSLYRYHFNGEELLFEDTSLSTSP GTGVRKKTC SFRIKEEKDVKTHLVPECQNSLHLSLGTSTSATPDGSHLA VDDLKNAEES KLGPDIGISKEDD

Database link: [Q7Z4N2-1](#)

 [Run BLAST with](#)

 [Run BLAST with](#)

**Positive control** IHC-P: Human retina tissue.

**General notes**

Reproducibility is key to advancing scientific discovery and accelerating scientists' next breakthrough.

Abcam is leading the way with our range of recombinant antibodies, knockout-validated antibodies and knockout cell lines, all of which support improved reproducibility.

We are also planning to innovate the way in which we present recommended applications and species on our product datasheets, so that only applications & species that have been tested in our own labs, our suppliers or by selected trusted collaborators are covered by our Abpromise™ guarantee.

In preparation for this, we have started to update the applications & species that this product is Abpromise guaranteed for.

We are also updating the applications & species that this product has been “predicted to work with,” however this information is not covered by our Abpromise guarantee.

Applications & species from publications and Abreviews that have not been tested in our own labs or in those of our suppliers are not covered by the Abpromise guarantee.

Please check that this product meets your needs before purchasing. If you have any questions, special requirements or concerns, please send us an inquiry and/or contact our Support team ahead of purchase. Recommended alternatives for this product can be found below, as well as

customer reviews and Q&As.

## Properties

---

<b>Form</b>	Liquid
<b>Storage instructions</b>	Shipped at 4°C. Store at +4°C short term (1-2 weeks). Upon delivery aliquot. Store at -20°C long term. Avoid freeze / thaw cycle.
<b>Storage buffer</b>	pH: 7.20 Preservative: 0.02% Sodium azide Constituents: 40% Glycerol (glycerin, glycerine), PBS
<b>Purity</b>	Immunogen affinity purified
<b>Clonality</b>	Polyclonal
<b>Isotype</b>	IgG

## Applications

---

Our [Abpromise guarantee](#) covers the use of **ab219965** in the following tested applications.

The application notes include recommended starting dilutions; optimal dilutions/concentrations should be determined by the end user.

Application	Abreviews	Notes
IHC-P		1/500 - 1/1000. Perform heat mediated antigen retrieval with citrate buffer pH 6 before commencing with IHC staining protocol.

---

## Target

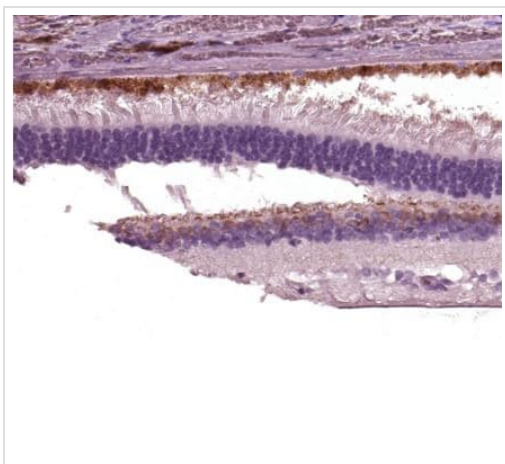
---

<b>Function</b>	Cation channel essential for the depolarizing photoresponse of retinal ON bipolar cells. It is part of the GRM6 signaling cascade. May play a role in metastasis suppression (By similarity). May act as a spontaneously active, calcium-permeable plasma membrane channel.
<b>Tissue specificity</b>	Expressed in the retina where it localizes to the outer plexiform layer. Highly expressed in benign melanocytic nevi and diffusely expressed in various in situ melanomas, but not detected in melanoma metastases. Also expressed in melanocytes and pigmented metastatic melanoma cell lines. In melanocytes expression appears to be regulated at the level of transcription and mRNA processing.
<b>Involvement in disease</b>	Defects in TRPM1 are the cause of congenital stationary night blindness type 1C (CSNB1C) [MIM:613216]. A non-progressive retinal disorder characterized by impaired night vision, often associated with nystagmus and myopia.
<b>Sequence similarities</b>	Belongs to the transient receptor (TC 1.A.4) family. LTrpC subfamily. TRPM1 sub-subfamily.
<b>Cellular localization</b>	Cell membrane.

---

## Images

---



Immunohistochemistry (Formalin/PFA-fixed paraffin-embedded sections) - Anti-TRPM1 antibody (ab219965)

Immunohistochemical analysis of human retina tissue labeling TRPM1 in the cytoplasm of inner nuclear layer and outer plexiform layer with ab219965 at a 1/500 dilution.

Performed heat mediated antigen retrieval with citrate buffer pH 6 before commencing with IHC staining protocol.

**Please note:** All products are "FOR RESEARCH USE ONLY. NOT FOR USE IN DIAGNOSTIC PROCEDURES"

### Our Abpromise to you: Quality guaranteed and expert technical support

---

- Replacement or refund for products not performing as stated on the datasheet
- Valid for 12 months from date of delivery
- Response to your inquiry within 24 hours
- We provide support in Chinese, English, French, German, Japanese and Spanish
- Extensive multi-media technical resources to help you
- We investigate all quality concerns to ensure our products perform to the highest standards

If the product does not perform as described on this datasheet, we will offer a refund or replacement. For full details of the Abpromise, please visit <https://www.abcam.com/abpromise> or contact our technical team.

### Terms and conditions

---

- Guarantee only valid for products bought direct from Abcam or one of our authorized distributors