

Product datasheet

Anti-TSH antibody ab64378

1 References 1 Image

Overview

<b>Product name</b>	Anti-TSH antibody
<b>Description</b>	Rabbit polyclonal to TSH
<b>Host species</b>	Rabbit
<b>Tested applications</b>	<b>Suitable for:</b> IHC-P
<b>Species reactivity</b>	<b>Reacts with:</b> Human
<b>Immunogen</b>	Full length native protein (purified) corresponding to Human TSH.
<b>Positive control</b>	Human anterior pituitary tissue
<b>General notes</b>	<b>This product is FOR RESEARCH USE ONLY. For commercial use, please contact <a href="mailto:partnerships@abcam.com">partnerships@abcam.com</a>.</b> Cytoplasmic staining pattern

Properties

<b>Form</b>	Liquid
<b>Storage instructions</b>	Shipped at 4°C. Upon delivery aliquot and store at -20°C. Avoid freeze / thaw cycles.
<b>Storage buffer</b>	pH: 7.6 Preservative: 0.1% Sodium azide Constituents: PBS, 1% BSA
<b>Purity</b>	Immunogen affinity purified
<b>Clonality</b>	Polyclonal
<b>Isotype</b>	IgG

Applications

Our [Abpromise guarantee](#) covers the use of **ab64378** in the following tested applications.

The application notes include recommended starting dilutions; optimal dilutions/concentrations should be determined by the end user.

Application	Abreviews	Notes
IHC-P		1/200.

## Target

---

### Relevance

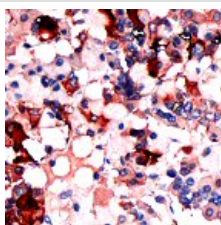
Thyroid stimulating hormone, also known as thyrotropin, is secreted from cells in the anterior pituitary called thyrotrophs, binds its receptors on epithelial cells in the thyroid gland, and stimulates that gland to synthesize and release thyroid hormones. TSH is a glycoprotein hormone composed of two subunits which are non covalently bound to one another. The alpha subunit of TSH is also present in two other pituitary glycoprotein hormones, follicle stimulating hormone and luteinizing hormone, and, in primates, in the placental hormone chorionic gonadotropin. Each of these hormones also has a unique beta subunit, which provides receptor specificity. In other words, TSH is composed of alpha subunit bound to the TSH beta subunit, and TSH associates only with its own receptor. Free alpha and beta subunits have essentially no biological activity.

### Cellular localization

Secreted

## Images

---



ab64378, at a dilution of 1/200, staining TSH in formalin fixed, paraffin embedded human anterior pituitary tissue by Immunohistochemistry.

Immunohistochemistry (Formalin/PFA-fixed paraffin-embedded sections) - Anti-TSH antibody (ab64378)

**Please note:** All products are "FOR RESEARCH USE ONLY. NOT FOR USE IN DIAGNOSTIC PROCEDURES"

## Our Abpromise to you: Quality guaranteed and expert technical support

---

- Replacement or refund for products not performing as stated on the datasheet
- Valid for 12 months from date of delivery
- Response to your inquiry within 24 hours
- We provide support in Chinese, English, French, German, Japanese and Spanish
- Extensive multi-media technical resources to help you
- We investigate all quality concerns to ensure our products perform to the highest standards

If the product does not perform as described on this datasheet, we will offer a refund or replacement. For full details of the Abpromise, please visit <https://www.abcam.com/abpromise> or contact our technical team.

## Terms and conditions

---

- Guarantee only valid for products bought direct from Abcam or one of our authorized distributors