

Product datasheet

Anti-TSPY1/TSPY antibody - C-terminal ab189962

2 Images

Overview

| | |
|----------------------------|--|
| Product name | Anti-TSPY1/TSPY antibody - C-terminal |
| Description | Rabbit polyclonal to TSPY1/TSPY - C-terminal |
| Host species | Rabbit |
| Tested applications | Suitable for: WB, IHC-P |
| Species reactivity | Reacts with: Mouse, Human |
| Immunogen | Synthetic peptide within Human TSPY1/TSPY (C terminal). The exact sequence is proprietary. 20 amino acids. NP_003299.2. Database link: Q01534 |
| Positive control | Human testis tissue; A20 cell lysate. |
| General notes | This product was previously labelled as TSPY1 |

Properties

| | |
|-----------------------------|---|
| Form | Liquid |
| Storage instructions | Shipped at 4°C. Store at +4°C short term (1-2 weeks). Upon delivery aliquot. Store at -20°C long term. Avoid freeze / thaw cycle. |
| Storage buffer | Preservative: 0.02% Sodium azide Constituent: 99% PBS |
| Purity | Immunogen affinity purified |
| Clonality | Polyclonal |
| Isotype | IgG |

Applications

Our [Abpromise guarantee](#) covers the use of **ab189962** in the following tested applications.

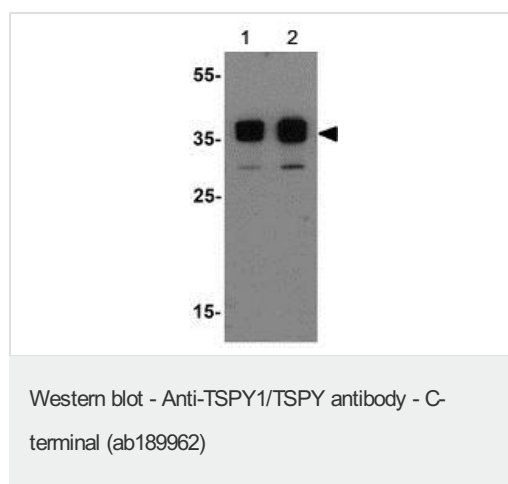
The application notes include recommended starting dilutions; optimal dilutions/concentrations should be determined by the end user.

| Application | Abreviews | Notes |
|-------------|-----------|---|
| WB | | Use a concentration of 0.5 - 1 µg/ml. Predicted molecular weight: 35 kDa. |
| IHC-P | | Use a concentration of 5 µg/ml. |

Target

| | |
|---|---|
| Function | May be involved in sperm differentiation and proliferation. |
| Tissue specificity | Specifically expressed in testicular tissues. Isoform 1 and isoform 2 are expressed in spermatogonia and spermatocytes. Found in early testicular carcinoma in situ, spermatogonial cells in testicular tissues of 46,X,Y female and in prostate cancer cell lines. |
| Involvement in disease | Note=TSPY is located in the gonadoblastoma critical region and is preferentially expressed in tumor germ cells of gonadoblastoma specimens. Expression also correlates with testicular seminoma and tumorigenesis of the prostate gland. |
| Sequence similarities | Belongs to the nucleosome assembly protein (NAP) family. |
| Developmental stage | Detected in 22-week old testis. |
| Post-translational modifications | Phosphorylated. |
| Cellular localization | Cytoplasm. Nucleus. Predominantly cytoplasmic. Also found in nucleus. |

Images

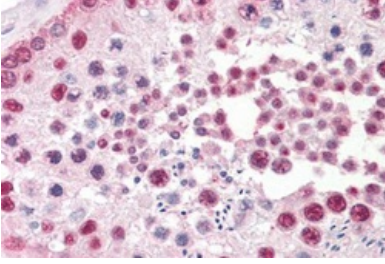


Lane 1 : Anti-TSPY1/TSPY antibody - C-terminal (ab189962) at 0.5 µg/ml

Lane 2 : Anti-TSPY1/TSPY antibody - C-terminal (ab189962) at 1 µg/ml

All lanes : A20 cell lysate

Predicted band size: 35 kDa



Immunohistochemical analysis of formalin-fixed, paraffin-embedded Human testis tissue labeling TSPY1/TSPY with ab189962 at 5µg/ml.

Immunohistochemistry (Formalin/PFA-fixed paraffin-embedded sections) - Anti-TSPY1/TSPY antibody - C-terminal (ab189962)

Please note: All products are "FOR RESEARCH USE ONLY. NOT FOR USE IN DIAGNOSTIC PROCEDURES"

Our Abpromise to you: Quality guaranteed and expert technical support

- Replacement or refund for products not performing as stated on the datasheet
- Valid for 12 months from date of delivery
- Response to your inquiry within 24 hours
- We provide support in Chinese, English, French, German, Japanese and Spanish
- Extensive multi-media technical resources to help you
- We investigate all quality concerns to ensure our products perform to the highest standards

If the product does not perform as described on this datasheet, we will offer a refund or replacement. For full details of the Abpromise, please visit <https://www.abcam.com/abpromise> or contact our technical team.

Terms and conditions

- Guarantee only valid for products bought direct from Abcam or one of our authorized distributors