


Product datasheet

Anti-Tuftelin 1 antibody ab204234

2 Images

Overview

| | |
|----------------------------|---|
| Product name | Anti-Tuftelin 1 antibody |
| Description | Rabbit polyclonal to Tuftelin 1 |
| Host species | Rabbit |
| Tested applications | Suitable for: ICC/IF, IHC-P |
| Species reactivity | Reacts with: Human Predicted to work with: Cow  |
| Immunogen | Recombinant fragment corresponding to Human Tuftelin 1 aa 100-179. Sequence: KSEVQYIQEARNCLQKLREDISSKLDNRNLGDSLHRQEIQVV LEKPNGFSQ SPTALYSSPPEVDTCINEDVESLRKTVQDL Database link: Q9NNX1 Run BLAST with Run BLAST with |
| Positive control | Human kidney tissue. A-431 cells. |
| General notes | <p>Reproducibility is key to advancing scientific discovery and accelerating scientists' next breakthrough.</p> <p>Abcam is leading the way with our range of recombinant antibodies, knockout-validated antibodies and knockout cell lines, all of which support improved reproducibility.</p> <p>We are also planning to innovate the way in which we present recommended applications and species on our product datasheets, so that only applications & species that have been tested in our own labs, our suppliers or by selected trusted collaborators are covered by our Abpromise™ guarantee.</p> <p>In preparation for this, we have started to update the applications & species that this product is Abpromise guaranteed for.</p> <p>We are also updating the applications & species that this product has been “predicted to work with,” however this information is not covered by our Abpromise guarantee.</p> <p>Applications & species from publications and Abreviews that have not been tested in our own labs or in those of our suppliers are not covered by the Abpromise guarantee.</p> <p>Please check that this product meets your needs before purchasing. If you have any questions, special requirements or concerns, please send us an inquiry and/or contact our Support team ahead of purchase. Recommended alternatives for this product can be found below, as well as customer reviews and Q&As.</p> |

Properties

| | |
|-----------------------------|---|
| Form | Liquid |
| Storage instructions | Shipped at 4°C. Store at +4°C short term (1-2 weeks). Upon delivery aliquot. Store at -20°C long term. Avoid freeze / thaw cycle. |
| Storage buffer | pH: 7.20 Preservative: 0.02% Sodium azide Constituents: 59% PBS, 40% Glycerol (glycerin, glycerine) |
| Purity | Immunogen affinity purified |
| Clonality | Polyclonal |
| Isotype | IgG |

Applications

Our [Abpromise guarantee](#) covers the use of **ab204234** in the following tested applications.

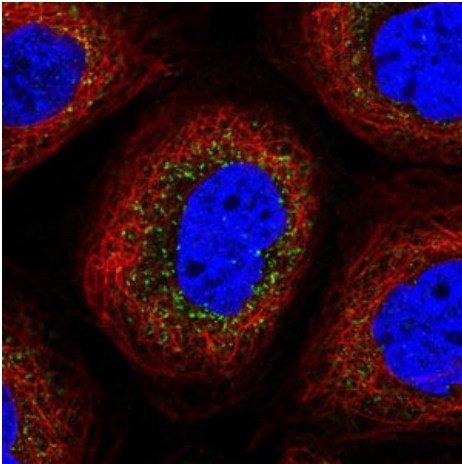
The application notes include recommended starting dilutions; optimal dilutions/concentrations should be determined by the end user.

| Application | Abreviews | Notes |
|-------------|-----------|--|
| ICC/IF | | Use a concentration of 0.25 - 2 µg/ml. |
| IHC-P | | 1/50 - 1/200. Perform heat mediated antigen retrieval with citrate buffer pH 6 before commencing with IHC staining protocol. |

Target

| | |
|------------------------------|--|
| Function | Involved in the mineralization and structural organization of enamel. |
| Sequence similarities | Belongs to the tuftelin family. |
| Cellular localization | Secreted. Secreted at a very early stage of enamel formation, concentrated at the dentin-enamel junction and tightly bound to the surface of the growing crystallites. |

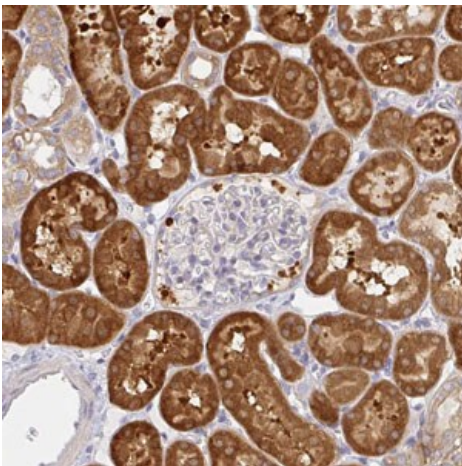
Images



Immunofluorescence analysis of A-431 cells labeling Tuftelin 1 with ab204234 at 4 $\mu\text{g}/\text{mL}$.

Fixation/Permeabilization: PFA/Triton X-100.

Immunocytochemistry/ Immunofluorescence - Anti-Tuftelin 1 antibody (ab204234)



Immunohistochemical analysis of paraffin-embedded human kidney tissue labeling Tuftelin 1 with ab204234 at 1/50 dilution.

Immunohistochemistry (Formalin/PFA-fixed paraffin-embedded sections) - Anti-Tuftelin 1 antibody (ab204234)

Please note: All products are "FOR RESEARCH USE ONLY. NOT FOR USE IN DIAGNOSTIC PROCEDURES"

Our Abpromise to you: Quality guaranteed and expert technical support

- Replacement or refund for products not performing as stated on the datasheet
- Valid for 12 months from date of delivery
- Response to your inquiry within 24 hours

- We provide support in Chinese, English, French, German, Japanese and Spanish
- Extensive multi-media technical resources to help you
- We investigate all quality concerns to ensure our products perform to the highest standards

If the product does not perform as described on this datasheet, we will offer a refund or replacement. For full details of the Abpromise, please visit <https://www.abcam.com/abpromise> or contact our technical team.

Terms and conditions

- Guarantee only valid for products bought direct from Abcam or one of our authorized distributors