



Product datasheet

Anti-TWF1/Twinfilin-1 antibody ab233129

3 Images

Overview

Product name	Anti-TWF1/Twinfilin-1 antibody
Description	Rabbit polyclonal to TWF1/Twinfilin-1
Host species	Rabbit
Tested applications	Suitable for: WB, IHC-P
Species reactivity	Reacts with: Human
Immunogen	<p>Recombinant fragment (His-tag) corresponding to Human TWF1/Twinfilin-1 aa 1-252. Expressed in E.coli. N-terminal tag.</p> <p>Sequence:</p> <p>MSHQTGIQASEDVKEIFARARNGKYRLLKISIENEQLVIG SYSQPSSDWD KDYDSFVLPLEDKQPCYILFRLDSQNAQGYEWIFIAW SPDHSVHRQKML YAATRATLKKEFGGGHIKDEVFGTVKEDVSLHGYYKYL LSQSSPAPLTAA EEELRQIKINEVQTDVGVDTKHQTLQGVAFPISREAFQ ALEKLNNRQLNY VQLEIDIKNEIIILANTTNTTELKDLPKRIPKDSARYHFFLYK HSHEGDYL ES</p> <p>Database link: Q12792-1</p> <p style="text-align: right;"> Run BLAST with  Run BLAST with</p>
Positive control	IHC-P: Human brain tissue. WB: Recombinant human TWF1/Twinfilin-1 protein and pig mammary gland tissue lysate.
General notes	This product was previously labelled as TWF1

Properties

Form	Liquid
Storage instructions	Shipped at 4°C. Store at +4°C short term (1-2 weeks). Upon delivery aliquot. Store at -20°C long term. Avoid freeze / thaw cycle.
Storage buffer	pH: 7.4 Preservative: 0.02% Sodium azide

	Constituents: PBS, 50% Glycerol
Purity	Immunogen affinity purified
Purification notes	Antigen-specific affinity chromatography followed by Protein A affinity chromatography.
Clonality	Polyclonal
Isotype	IgG

Applications

Our [Abpromise guarantee](#) covers the use of **ab233129** in the following tested applications.

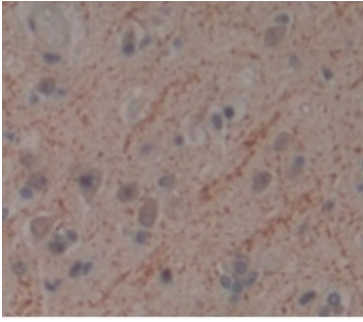
The application notes include recommended starting dilutions; optimal dilutions/concentrations should be determined by the end user.

Application	Abreviews	Notes
WB		Use a concentration of 0.2 - 2 µg/ml.
IHC-P		Use a concentration of 5 - 20 µg/ml.

Target

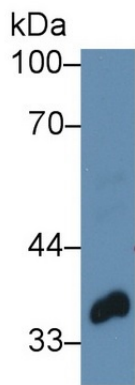
Function	Actin-binding protein involved in motile and morphological processes. Inhibits actin polymerization, likely by sequestering G-actin. By capping the barbed ends of filaments, it also regulates motility. Seems to play an important role in clathrin-mediated endocytosis and distribution of endocytic organelles.
Tissue specificity	Expressed at high levels in the colon, testis, ovary, prostate and lung. Expressed at lower levels in the brain, bladder and heart. Not detected in liver.
Sequence similarities	Belongs to the actin-binding proteins ADF family. Twinfilin subfamily. Contains 2 ADF-H domains.
Post-translational modifications	Phosphorylated on serine and threonine residues.
Cellular localization	Cytoplasm. Cytoplasm > cytoskeleton. Diffuse cytoplasmic localization with perinuclear and G-actin-rich cortical actin structures sublocalization. Also found at membrane ruffles and cell-cell contacts.

Images



Immunohistochemistry (Formalin/PFA-fixed paraffin-embedded sections) - Anti-TWF1/Twinfilin-1 antibody (ab233129)

Formalin-fixed, paraffin-embedded human brain tissue stained for TWF1/Twinfilin-1 using ab233129 at 20 µg/mL in immunohistochemical analysis. DAB staining.

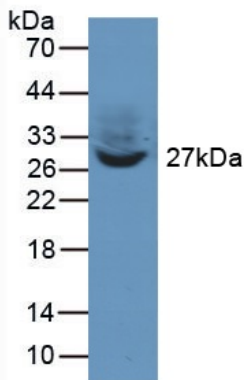


Western blot - Anti-TWF1/Twinfilin-1 antibody (ab233129)

Anti-TWF1/Twinfilin-1 antibody (ab233129) at 3 µg/ml + Pig mammary gland tissue lysate

Secondary

HRP-conjugated goat anti-rabbit IgG (polyclonal) at 0.2 µg/ml



Western blot - Anti-TWF1/Twinfilin-1 antibody (ab233129)

Anti-TWF1/Twinfilin-1 antibody (ab233129) at 2 µg/ml + Recombinant human TWF1/Twinfilin-1 protein

Our Abpromise to you: Quality guaranteed and expert technical support

- Replacement or refund for products not performing as stated on the datasheet
- Valid for 12 months from date of delivery
- Response to your inquiry within 24 hours

- We provide support in Chinese, English, French, German, Japanese and Spanish
- Extensive multi-media technical resources to help you
- We investigate all quality concerns to ensure our products perform to the highest standards

If the product does not perform as described on this datasheet, we will offer a refund or replacement. For full details of the Abpromise, please visit <https://www.abcam.com/abpromise> or contact our technical team.

Terms and conditions

- Guarantee only valid for products bought direct from Abcam or one of our authorized distributors