

Product datasheet

Anti-TXNDC13/TMX4 antibody ab242100

2 Images

Overview

---

<b>Product name</b>	Anti-TXNDC13/TMX4 antibody
<b>Description</b>	Rabbit polyclonal to TXNDC13/TMX4
<b>Host species</b>	Rabbit
<b>Tested applications</b>	<b>Suitable for:</b> IP, WB
<b>Species reactivity</b>	<b>Reacts with:</b> Human
<b>Immunogen</b>	Synthetic peptide within Human TXNDC13/TMX4 aa 299-349. The exact sequence is proprietary. Database link: <a href="#">Q9H1E5</a>
<b>Positive control</b>	WB: HeLa, HEK-293T, jurkat whole cell lysate. IP: HeLa whole cell lysate.
<b>General notes</b>	This product was previously labelled as TXNDC13

Reproducibility is key to advancing scientific discovery and accelerating scientists' next breakthrough.

Abcam is leading the way with our range of recombinant antibodies, knockout-validated antibodies and knockout cell lines, all of which support improved reproducibility.

We are also planning to innovate the way in which we present recommended applications and species on our product datasheets, so that only applications & species that have been tested in our own labs, our suppliers or by selected trusted collaborators are covered by our Abpromise™ guarantee.

In preparation for this, we have started to update the applications & species that this product is Abpromise guaranteed for.

We are also updating the applications & species that this product has been “predicted to work with,” however this information is not covered by our Abpromise guarantee.

Applications & species from publications and Abreviews that have not been tested in our own labs or in those of our suppliers are not covered by the Abpromise guarantee.

Please check that this product meets your needs before purchasing. If you have any questions, special requirements or concerns, please send us an inquiry and/or contact our Support team ahead of purchase. Recommended alternatives for this product can be found below, as well as customer reviews and Q&As.

Properties

---

<b>Form</b>	Liquid
<b>Storage instructions</b>	Shipped at 4°C. Store at +4°C short term (1-2 weeks). Upon delivery aliquot. Store at -20°C long term. Avoid freeze / thaw cycle.
<b>Storage buffer</b>	pH: 6.8 Preservative: 0.09% Sodium azide Constituents: Tris buffered saline, 0.1% BSA
<b>Purity</b>	Immunogen affinity purified
<b>Purification notes</b>	Antibody was affinity purified using an epitope specific to TXNDC13/TMX4 immobilized on solid support.
<b>Clonality</b>	Polyclonal
<b>Isotype</b>	IgG

## Applications

Our [Abpromise guarantee](#) covers the use of **ab242100** in the following tested applications.

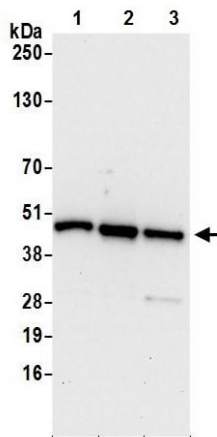
The application notes include recommended starting dilutions; optimal dilutions/concentrations should be determined by the end user.

Application	Abreviews	Notes
IP		Use at an assay dependent concentration. 20 µl/mg lysate
WB		1/1000. Predicted molecular weight: 39 kDa.

## Target

<b>Relevance</b>	TXNDC13 contains 1 thioredoxin domain. The exact function of TXNDC13 remains unknown.
<b>Cellular localization</b>	Membrane; Single pass type I membrane protein.

## Images



Western blot - Anti-TXNDC13/TMX4 antibody (ab242100)

**All lanes :** Anti-TXNDC13/TMX4 antibody (ab242100) at 1/1000 dilution

**Lane 1 :** HeLa (human epithelial cell line from cervix adenocarcinoma) whole cell lysate

**Lane 2 :** HEK-293T (human epithelial cell line from embryonic kidney transformed with large T antigen) whole cell lysate

**Lane 3 :** Jurkat (human T cell leukemia cell line from peripheral blood) whole cell lysate

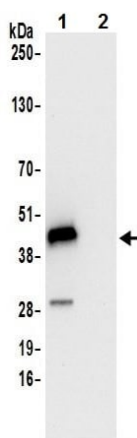
Lysates/proteins at 15 µg per lane.

Developed using the ECL technique.

**Predicted band size:** 39 kDa

**Exposure time:** 10 seconds

Lysates prepared in NETN buffer.



Immunoprecipitation - Anti-TXNDC13/TMX4 antibody (ab242100)

TXNDC13/TMX4 IP in HeLa (human epithelial cell line from cervix adenocarcinoma) whole cell lysate (1.0 mg per IP reaction; 20% of IP loaded) using ab242100 at 20 µL per reaction. Western blot was performed on the immunoprecipitate using ab242100 at 1/250 dilution.

**Lane 1:** ab242100 IP in HeLa whole cell lysate.

**Lane 2:** Control IgG in HeLa whole cell lysate.

Detection: Chemiluminescence with an exposure time of 10 seconds.

Lysates prepared in NETN buffer.

**Please note:** All products are "FOR RESEARCH USE ONLY. NOT FOR USE IN DIAGNOSTIC PROCEDURES"

### Our Abpromise to you: Quality guaranteed and expert technical support

- Replacement or refund for products not performing as stated on the datasheet
- Valid for 12 months from date of delivery
- Response to your inquiry within 24 hours

- We provide support in Chinese, English, French, German, Japanese and Spanish
- Extensive multi-media technical resources to help you
- We investigate all quality concerns to ensure our products perform to the highest standards

If the product does not perform as described on this datasheet, we will offer a refund or replacement. For full details of the Abpromise, please visit <https://www.abcam.com/abpromise> or contact our technical team.

### **Terms and conditions**

---

- Guarantee only valid for products bought direct from Abcam or one of our authorized distributors