

Product datasheet

Anti-UACA/Nucling antibody ab169684

1 References 1 Image

Overview

Product name	Anti-UACA/Nucling antibody
Description	Mouse polyclonal to UACA/Nucling
Host species	Mouse
Tested applications	Suitable for: WB
Species reactivity	Reacts with: Human
Immunogen	<p>Full length protein corresponding to Human UACA/Nucling aa 1-1416. Sequence:</p> <pre> MKSLKSRLRRQDVPGPASSGAAAASAHAADWNKYDDR LMKAAERGDVEKV TSILAKKGVNPGKLDVEGRSVFHVVTSKGNLECLNAILHG VDITSDTA GRNALHLLAAKYGHALCLQKLLQYNCPTTEHADLQGR TALHDAAMADCPSSI QLLCDHGASVNAKDVDGRTPLVLATQMSRPTICQL LIDRGADVNSRDKQN RTALMLGCEYGCRAVEVLIKNGADISLLDALGHDSS YYARIGDNDILT LLKTASENTNKGRELWKKGPSLQQRNLTHMQDEVN VKSHQREHQNIQDLE IENEDLKERLRKIQQEQRILLDKVNGLQLQLNEE VMVADDLESEREKLS LLAAKEKQHEESLRTIEALKNRFKYFESDHLGSGSH FSNRKEDMLLKQGQ MYMADSQCTSPGIPAQMQRSMRPLELSLPSQTSYSE N EILKKELEAMR TFCESAKQDRLKLQNELAHKVAECKALALECERVKED SD EQIKQLEDALK DVQKRMYESGKVKQMQTHFLALKEHLTSEAASGNH RLTEELKDQLKDLK VKYEGASAEVGKLRNQIKQNEEMVEEFKRDEGKLI ENKR LQKELSMCEM EREKKGRKVTEMEGQAKELSAKLALSIPAEEKFEN MKSSL SNEVNEKAKKL VEMEREHEKSLSEIRQLKRELENVKAKLAQHVKPEE HEQ VKSRLEQKSGE </pre>

LGKKITELTLKNQTLQKEIEKVYLDNKLLKEQAHNLTIE MKN
HYVPLKVS
EDMKKSHDAIIDDLNRKLLDVTQKYTEKKLEMEKLLLEND
SLSKDVSRL E
TVFVPPEKHEKEI IALKSNIVELKKQSELKKKCGEDQEKI H
ALTSENTN
LKKMMSNQYVPVKTHEEVKMTLNDTLAKTNRELLDVKKK
FEDINQEFVKI
KDKNEILKRNLENTQNQIKAEYISLAEHEAKMSSLSQSMRK
VQDSNAEIL
ANYRKGQEEIMTLHAEIKAQKKELDTIQECIKVKYAPVMSFE
ECERKFKA
TEKELKDQLSEQTQKYSVSEEEVKKNKQENDKLLKKEIFTL
QKDLRDKTVL
IEKSHEMERALS RKTDELNKQLKDLSQKYTEVKNVKEKLV
EENAKQTSEI
LAVQNLLQKQHVPLEQVEALKKSLNGTIENLKEELKSMQR
CYEKEQQTVT
KLHQLLENQKNSSVPLAEHLQIKEAFEKEVGIKASLREKE
EESQNK MEE
VSKLQSEVQNTKQALKKLETREVV DLSKYKATKSDLETQI
SSLNEKLANL
NRKYEEVCEEVLHAKKKEISAKDEKELLHFSIEQEIKDQKE
RCDKSLTTI
TELQRRIQESAKQIEAKDNKITELLNDVERLKQALNGLSQL
TYTSGNPTK
RQSQLIDTLQHVKSL EQQLADADRQHQEVIAIYRTHLLSA
AQGHMDEDV QEALLQIQMRQGLVC

Database link: [NP_060473.2](#)

 [Run BLAST with](#)

 [Run BLAST with](#)

Positive control

UACA/Nucling transfected 293T cell lysate.

General notes

Reproducibility is key to advancing scientific discovery and accelerating scientists' next breakthrough.

Abcam is leading the way with our range of recombinant antibodies, knockout-validated antibodies and knockout cell lines, all of which support improved reproducibility.

We are also planning to innovate the way in which we present recommended applications and species on our product datasheets, so that only applications & species that have been tested in our own labs, our suppliers or by selected trusted collaborators are covered by our Abpromise™ guarantee.

In preparation for this, we have started to update the applications & species that this product is Abpromise guaranteed for.

We are also updating the applications & species that this product has been "predicted to work with," however this information is not covered by our Abpromise guarantee.

Applications & species from publications and Abreviews that have not been tested in our own labs or in those of our suppliers are not covered by the Abpromise guarantee.

Please check that this product meets your needs before purchasing. If you have any questions, special requirements or concerns, please send us an inquiry and/or contact our Support team ahead of purchase. Recommended alternatives for this product can be found below, as well as

customer reviews and Q&As.

Properties

Form	Liquid
Storage instructions	Shipped at 4°C. Store at +4°C short term (1-2 weeks). Upon delivery aliquot. Store at -20°C long term.
Storage buffer	pH: 7.4 Constituent: 99% PBS
Purity	Protein A purified
Clonality	Polyclonal
Isotype	IgG

Applications

Our [Abpromise guarantee](#) covers the use of **ab169684** in the following tested applications.

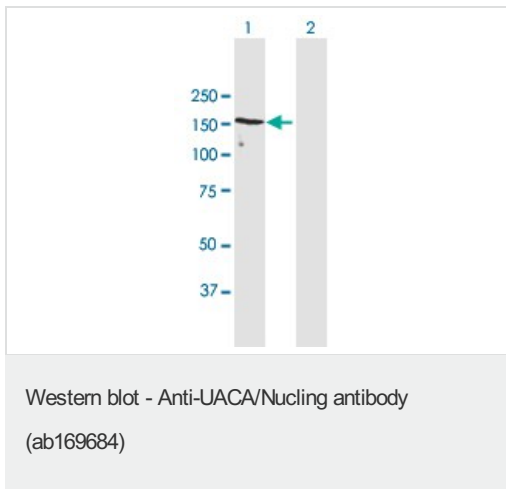
The application notes include recommended starting dilutions; optimal dilutions/concentrations should be determined by the end user.

Application	Abreviews	Notes
WB		Use a concentration of 1 µg/ml. Predicted molecular weight: 163 kDa.

Target

Function	Regulates APAF1 expression and plays an important role in the regulation of stress-induced apoptosis. Promotes apoptosis by regulating three pathways, apoptosome up-regulation, LGALS3/galectin-3 down-regulation and NF-kappa-B inactivation. Regulates the redistribution of APAF1 into the nucleus after proapoptotic stress. Down-regulates the expression of LGALS3 by inhibiting NFKB1. Modulates isoactin dynamics to regulate the morphological alterations required for cell growth and motility. Interaction with ARF6 may modulate cell shape and motility after injury.
Tissue specificity	Highly expressed in skeletal muscle, heart, kidney and pancreas. Expressed in choroid, retina and epidermal melanocytes. Expressed in eye muscles and thyroid follicular cells.
Sequence similarities	Contains 6 ANK repeats.
Cellular localization	Nucleus. Cytoplasm. Cytoplasm > cytoskeleton. Expressed diffusely in cytoplasm.

Images



All lanes : Anti-UACA/Nucling antibody (ab169684) at 1 µg/ml

Lane 1 : UACA/Nucling transfected 293T cell lysate

Lane 2 : Non-transfected 293T cell lysate

Lysates/proteins at 15 µl per lane.

Developed using the ECL technique.

Predicted band size: 163 kDa

Please note: All products are "FOR RESEARCH USE ONLY. NOT FOR USE IN DIAGNOSTIC PROCEDURES"

Our Abpromise to you: Quality guaranteed and expert technical support

- Replacement or refund for products not performing as stated on the datasheet
- Valid for 12 months from date of delivery
- Response to your inquiry within 24 hours
- We provide support in Chinese, English, French, German, Japanese and Spanish
- Extensive multi-media technical resources to help you
- We investigate all quality concerns to ensure our products perform to the highest standards

If the product does not perform as described on this datasheet, we will offer a refund or replacement. For full details of the Abpromise, please visit <https://www.abcam.com/abpromise> or contact our technical team.

Terms and conditions

- Guarantee only valid for products bought direct from Abcam or one of our authorized distributors