



Product datasheet

Anti-UBA2 antibody - C-terminal ab189289

2 Images

Overview

<b>Product name</b>	Anti-UBA2 antibody - C-terminal
<b>Description</b>	Rabbit polyclonal to UBA2 - C-terminal
<b>Host species</b>	Rabbit
<b>Specificity</b>	This antibody detects endogenous levels of total UBA2 protein.
<b>Tested applications</b>	<b>Suitable for:</b> IHC-P, WB
<b>Species reactivity</b>	<b>Reacts with:</b> Human
<b>Immunogen</b>	Synthetic peptide within Human UBA2 aa 591-640 (C terminal). The exact sequence is proprietary. NP_005490.1. Sequence:  DSDEEDSSNN ADVSEEERSR KRKLDEKENL SAKRSRIEQK EELDDVIALD  Database link: <a href="#">Q9UBT2</a>   <a href="#">Run BLAST with</a>  <a href="#">Run BLAST with</a>
<b>Positive control</b>	Human testis tissue; UV treated 293 cell extracts.

Properties

<b>Form</b>	Liquid
<b>Storage instructions</b>	Shipped at 4°C. Store at +4°C short term (1-2 weeks). Upon delivery aliquot. Store at -20°C long term. Avoid freeze / thaw cycle.
<b>Storage buffer</b>	pH: 7.40 Preservative: 0.02% Sodium azide Constituents: 50% Glycerol, 0.87% Sodium chloride, 49% PBS  PBS (without Mg <sup>2+</sup> , Ca <sup>2+</sup> )
<b>Purity</b>	Immunogen affinity purified
<b>Clonality</b>	Polyclonal
<b>Isotype</b>	IgG

Applications

## Applications

Our [Abpromise guarantee](#) covers the use of **ab189289** in the following tested applications.

The application notes include recommended starting dilutions; optimal dilutions/concentrations should be determined by the end user.

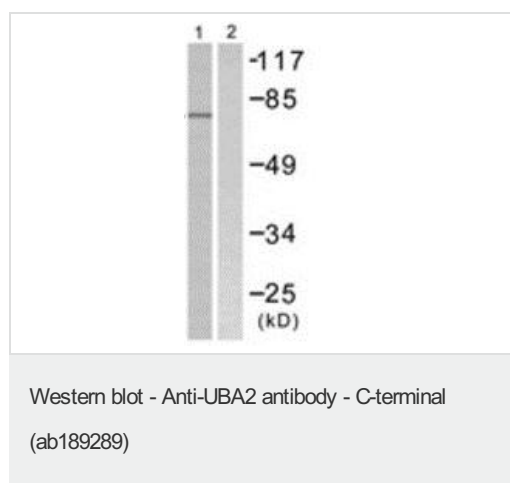
Application	Abreviews	Notes
IHC-P		Use a concentration of 10 µg/ml. Perform heat mediated antigen retrieval before commencing with IHC staining protocol.
WB		1/500 - 1/1000. Predicted molecular weight: 71 kDa.

## Target

### Relevance

Function: The heterodimer acts as a E1 ligase for SUMO1, SUMO2, SUMO3, and probably SUMO4. It mediates ATP-dependent activation of SUMO proteins followed by formation of a thioester bond between a SUMO protein and a conserved active site cysteine residue on UBA2/SAE2. Pathway: Protein modification; protein sumoylation. Similarity: Belongs to the ubiquitin-activating E1 family. PTM: Sumoylated with SUMO1 and SUMO2/3 and by UBC9. Sumoylation at Lys-236 inhibits enzymatic activity. Sumoylation at the C-terminal lysine cluster plays an essential role in nuclear trafficking.

## Images

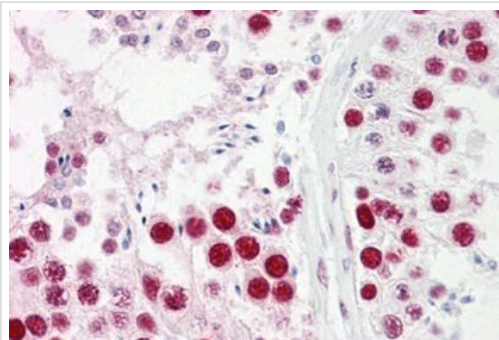


**All lanes** : Anti-UBA2 antibody - C-terminal (ab189289) at 1/500 dilution

**Lane 1** : 293 cell extracts, treated with UV 5'

**Lane 2** : 293 cell extracts, treated with UV 5' with synthesized peptide

**Predicted band size:** 71 kDa



Immunohistochemical analysis of formalin-fixed, paraffin-embedded Human testis tissue labeling UBA2 with ab189289 at 10µg/ml.

Immunohistochemistry (Formalin/PFA-fixed paraffin-embedded sections) - Anti-UBA2 antibody - C-terminal (ab189289)

**Please note:** All products are "FOR RESEARCH USE ONLY. NOT FOR USE IN DIAGNOSTIC PROCEDURES"

### **Our Abpromise to you: Quality guaranteed and expert technical support**

---

- Replacement or refund for products not performing as stated on the datasheet
- Valid for 12 months from date of delivery
- Response to your inquiry within 24 hours
  
- We provide support in Chinese, English, French, German, Japanese and Spanish
- Extensive multi-media technical resources to help you
- We investigate all quality concerns to ensure our products perform to the highest standards

If the product does not perform as described on this datasheet, we will offer a refund or replacement. For full details of the Abpromise, please visit <https://www.abcam.com/abpromise> or contact our technical team.

### **Terms and conditions**

---

- Guarantee only valid for products bought direct from Abcam or one of our authorized distributors