


Product datasheet

Anti-UBE2E3 antibody ab66257

1 Image

Overview

Product name	Anti-UBE2E3 antibody
Description	Mouse polyclonal to UBE2E3
Host species	Mouse
Tested applications	Suitable for: WB, ELISA
Species reactivity	Reacts with: Human Predicted to work with: Mouse, Rat, Horse, Chicken, Cow, Dog, Pig, Xenopus laevis, Zebrafish, Cynomolgus monkey, Rhesus monkey, Opossum 
Immunogen	Recombinant fragment with tag: RIQKELAEIT LDPPPNC SAG PKGDNIYEW R STILGPPGSV YEGGVFFLDI TFSSDYPFKP PKVTFRTR IY HCNINSQGV I CLDILKDN, corresponding to amino acids 65-153 of Human UBE2E3 Run BLAST with ExPASy Run BLAST with NCBI
Positive control	Partial recombinant UBE2E3 with tag.
General notes	<p>Reproducibility is key to advancing scientific discovery and accelerating scientists' next breakthrough.</p> <p>Abcam is leading the way with our range of recombinant antibodies, knockout-validated antibodies and knockout cell lines, all of which support improved reproducibility.</p> <p>We are also planning to innovate the way in which we present recommended applications and species on our product datasheets, so that only applications & species that have been tested in our own labs, our suppliers or by selected trusted collaborators are covered by our Abpromise™ guarantee.</p> <p>In preparation for this, we have started to update the applications & species that this product is Abpromise guaranteed for.</p> <p>We are also updating the applications & species that this product has been “predicted to work with,” however this information is not covered by our Abpromise guarantee.</p> <p>Applications & species from publications and Abreviews that have not been tested in our own labs or in those of our suppliers are not covered by the Abpromise guarantee.</p> <p>Please check that this product meets your needs before purchasing. If you have any questions, special requirements or concerns, please send us an inquiry and/or contact our Support team ahead of purchase. Recommended alternatives for this product can be found below, as well as customer reviews and Q&As.</p>

Properties

Form	Liquid
Storage instructions	Shipped at 4°C. Upon delivery aliquot and store at -20°C. Avoid freeze / thaw cycles.
Storage buffer	Constituents: Whole serum, 50% Glycerol
Purity	Whole antiserum
Clonality	Polyclonal
Isotype	IgG

Applications

Our [Abpromise guarantee](#) covers the use of **ab66257** in the following tested applications.

The application notes include recommended starting dilutions; optimal dilutions/concentrations should be determined by the end user.

Application	Abreviews	Notes
WB		
ELISA		

Application notes

ELISA: Use at an assay dependent dilution.
WB: 1/1000 - 1/2500. Predicted molecular weight: 23 kDa.

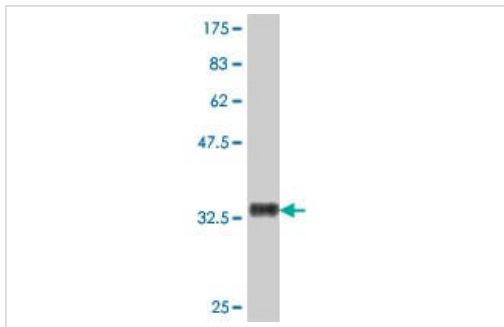
This antibody has only been tested in WB against the recombinant fragment used as immunogen. We have no data on the detection of endogenous protein.

Not yet tested in other applications.
Optimal dilutions/concentrations should be determined by the end user.

Target

Function	Accepts ubiquitin from the E1 complex and catalyzes its covalent attachment to other proteins. In vitro catalyzes 'Lys-11'- and 'Lys-48'-, as well as 'Lys-63'-linked polyubiquitination. Participates in the regulation of transepithelial sodium transport in renal cells. May be involved in cell growth arrest.
Tissue specificity	Ubiquitously expressed at low levels. Highly expressed in skeletal muscle.
Pathway	Protein modification; protein ubiquitination.
Sequence similarities	Belongs to the ubiquitin-conjugating enzyme family.
Cellular localization	Nucleus. Cytoplasm. Shuttles between the nucleus and cytoplasm in a IPO11-dependent manner.

Images



Western blot - Anti-UBE2E3 antibody (ab66257)

Western blot against tagged recombinant protein immunogen using ab66257 UBE2E3 antibody at 1/1000 dilution. Predicted band size of immunogen is 36 kDa.

Please note: All products are "FOR RESEARCH USE ONLY. NOT FOR USE IN DIAGNOSTIC PROCEDURES"

Our Abpromise to you: Quality guaranteed and expert technical support

- Replacement or refund for products not performing as stated on the datasheet
- Valid for 12 months from date of delivery
- Response to your inquiry within 24 hours
- We provide support in Chinese, English, French, German, Japanese and Spanish
- Extensive multi-media technical resources to help you
- We investigate all quality concerns to ensure our products perform to the highest standards

If the product does not perform as described on this datasheet, we will offer a refund or replacement. For full details of the Abpromise, please visit <https://www.abcam.com/abpromise> or contact our technical team.

Terms and conditions

- Guarantee only valid for products bought direct from Abcam or one of our authorized distributors