


Product datasheet

Anti-UPF3B/RENT3B antibody ab134566

1 References 2 Images

Overview

<b>Product name</b>	Anti-UPF3B/RENT3B antibody
<b>Description</b>	Rabbit polyclonal to UPF3B/RENT3B
<b>Host species</b>	Rabbit
<b>Tested applications</b>	<b>Suitable for:</b> WB, IP
<b>Species reactivity</b>	<b>Reacts with:</b> Human <b>Predicted to work with:</b> Chimpanzee, Rhesus monkey, Gorilla, Bat 
<b>Immunogen</b>	Synthetic peptide, corresponding to a region within amino acids 300-350 (KAKKLDKENL SDERASGQSC TLPKRSDSEL KDEKPKRPED ESGRDYRERE R) of Human UPF3B/RENT3B (NP_542199.1) <a href="#">Run BLAST with ExPASy</a> <a href="#">Run BLAST with NCBI</a>
<b>Positive control</b>	HeLa, 293T and Jurkat whole cell lysate ( <a href="#">ab7899</a> ).

Properties

<b>Form</b>	Liquid
<b>Storage instructions</b>	Shipped at 4°C. Store at +4°C.
<b>Storage buffer</b>	Preservative: 0.09% Sodium azide Constituent: 99% Tris citrate/phosphate  pH 7 to 8.
<b>Purity</b>	Immunogen affinity purified
<b>Clonality</b>	Polyclonal
<b>Isotype</b>	IgG

Applications

Our [Abpromise guarantee](#) covers the use of **ab134566** in the following tested applications.

The application notes include recommended starting dilutions; optimal dilutions/concentrations should be determined by the end user.

Application	Abreviews	Notes
WB		1/2000 - 1/10000. Predicted molecular weight: 58 kDa.
IP		Use at 2-10 µg/mg of lysate.

## Target

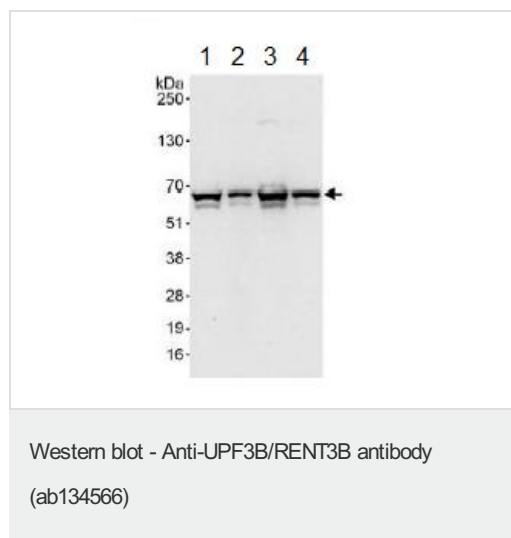
### Relevance

UPF3B is part of a post-splicing multiprotein complex involved in both mRNA nuclear export and mRNA surveillance. mRNA surveillance detects exported mRNAs with truncated open reading frames and initiates nonsense-mediated mRNA decay (NMD). When translation ends upstream from the last exon-exon junction, this triggers NMD to degrade mRNAs containing premature stop codons. UPF3B binds to the mRNA and remains bound after nuclear export, acting as a nucleocytoplasmic shuttling protein. It forms with Y14 a complex that binds specifically 20 nt upstream of exon-exon junctions. This gene is located on the long arm of chromosome X (referenced from entrez gene).

### Cellular localization

Nucleus. Cytoplasm. Note: Shuttling between the nucleus and the cytoplasm.

## Images



**All lanes :** Anti-UPF3B/RENT3B antibody (ab134566) at 0.1 µg/ml

**Lane 1 :** HeLa whole cell lysate at 50 µg

**Lane 2 :** HeLa whole cell lysate at 15 µg

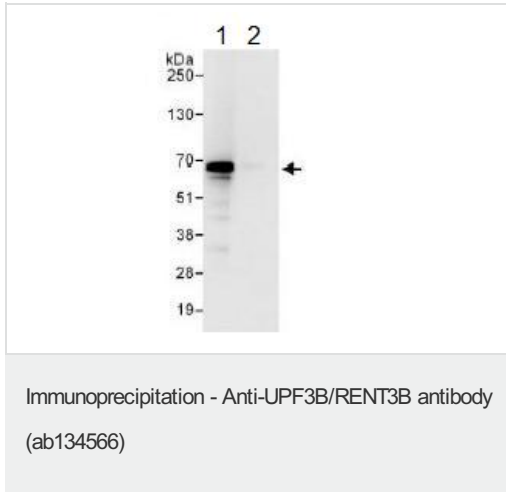
**Lane 3 :** 293T whole cell lysate at 50 µg

**Lane 4 :** Jurkat whole cell lysate at 50 µg

Developed using the ECL technique.

**Predicted band size:** 58 kDa

**Exposure time:** 10 seconds



Detection of UPF3B/RENT3B by Western Blot of Immunoprecipitate. Immunoprecipitation of HeLa whole cell lysate using ab134566 at 6µg/mg lysate (1 mg/IP; 20% of IP loaded/lane) followed by detection of UPF3B/RENT3B with ab134566 at 1µg/ml. The lysate in lane 2 is precipitated with an IgG control antibody. Detection: Chemiluminescence with exposure time of 3 seconds.

**Please note:** All products are "FOR RESEARCH USE ONLY. NOT FOR USE IN DIAGNOSTIC PROCEDURES"

### Our Abpromise to you: Quality guaranteed and expert technical support

---

- Replacement or refund for products not performing as stated on the datasheet
- Valid for 12 months from date of delivery
- Response to your inquiry within 24 hours
- We provide support in Chinese, English, French, German, Japanese and Spanish
- Extensive multi-media technical resources to help you
- We investigate all quality concerns to ensure our products perform to the highest standards

If the product does not perform as described on this datasheet, we will offer a refund or replacement. For full details of the Abpromise, please visit <https://www.abcam.com/abpromise> or contact our technical team.

### Terms and conditions

---

- Guarantee only valid for products bought direct from Abcam or one of our authorized distributors