

Product datasheet

Anti-UQCRC2 antibody ab103616

3 References 5 Images

Overview

<b>Product name</b>	Anti-UQCRC2 antibody
<b>Description</b>	Rabbit polyclonal to UQCRC2
<b>Host species</b>	Rabbit
<b>Tested applications</b>	<b>Suitable for:</b> WB, ICC/IF
<b>Species reactivity</b>	<b>Reacts with:</b> Mouse, Human
<b>Immunogen</b>	Full length Human UQCRC2 (NP_003357.2, amino acids 1-453).
<b>Positive control</b>	Human colon and Mouse kidney tissue lysates; A431 cell lysate; UQCRC2 transfected 293T cell lysate This antibody gave a positive result when used in the following formaldehyde fixed cell lines: HeLa

Properties

<b>Form</b>	Liquid
<b>Storage instructions</b>	Shipped at 4°C. Upon delivery aliquot. Store at -20°C or -80°C. Avoid freeze / thaw cycle.
<b>Storage buffer</b>	pH: 7.20 Constituent: 2.68% PBS
<b>Purity</b>	Protein A purified
<b>Clonality</b>	Polyclonal
<b>Isotype</b>	IgG

Applications

Our [Abpromise guarantee](#) covers the use of **ab103616** in the following tested applications.

The application notes include recommended starting dilutions; optimal dilutions/concentrations should be determined by the end user.

Application	Abreviews	Notes
WB		Use a concentration of 1 - 5 µg/ml. Predicted molecular weight: 48 kDa.
ICC/IF		Use a concentration of 5 µg/ml.

## Target

### Function

This is a component of the ubiquinol-cytochrome c reductase complex (complex III or cytochrome b-c1 complex), which is part of the mitochondrial respiratory chain. The core protein 2 is required for the assembly of the complex.

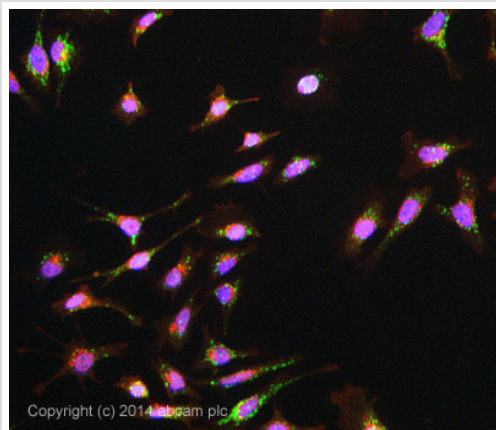
### Sequence similarities

Belongs to the peptidase M16 family. UQCRC2/QCR2 subfamily.

### Cellular localization

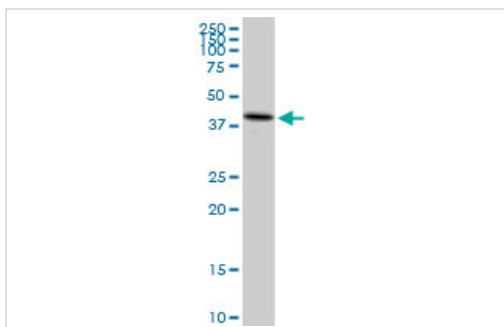
Mitochondrion inner membrane.

## Images



Immunocytochemistry/ Immunofluorescence - Anti-UQCRC2 antibody (ab103616)

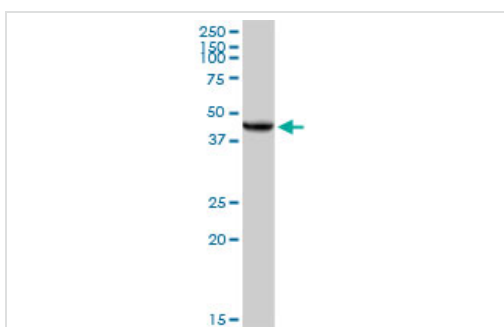
ICC/IF image of ab103616 stained HeLa cells. The cells were 4% formaldehyde fixed (10 min) and then incubated in 1%BSA / 10% normal goat serum / 0.3M glycine in 0.1% PBS-Tween for 1h to permeabilise the cells and block non-specific protein-protein interactions. The cells were then incubated with the antibody ab103616 at 5µg/ml overnight at +4°C. The secondary antibody (pseudo-colored green) was Alexa Fluor® 488 goat anti- rabbit (ab150081) IgG (H+L) preadsorbed, used at a 1/1000 dilution for 1h. Alexa Fluor® 594 WGA was used to label plasma membranes (pseudo-colored red) at a 1/200 dilution for 1h at room temperature. DAPI was used to stain the cell nuclei (pseudo-colored blue) at a concentration of 1.43µM for 1hour at room temperature.



Western blot - Anti-UQCRC2 antibody (ab103616)

Anti-UQCRC2 antibody (ab103616) at 5 µg/ml + Human colon tissue lysate at 50 µg

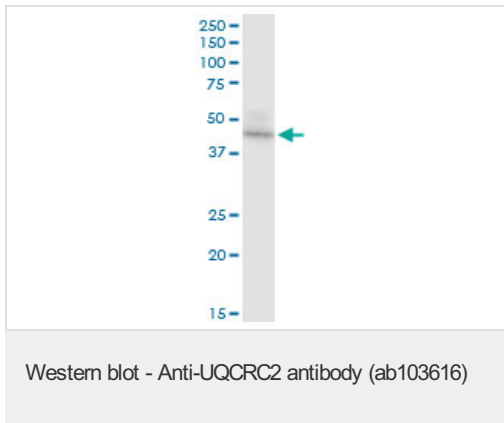
**Predicted band size: 48 kDa**



Western blot - Anti-UQCRC2 antibody (ab103616)

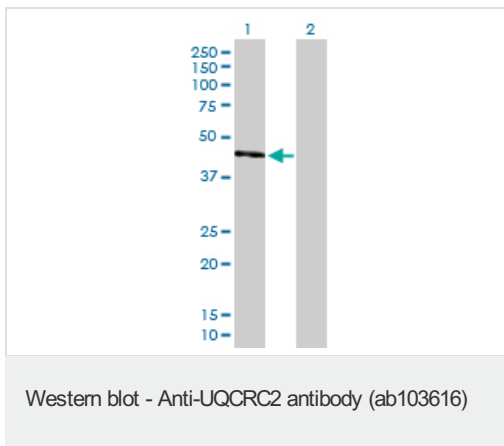
Anti-UQCRC2 antibody (ab103616) at 5 µg/ml + Mouse kidney tissue lysate at 50 µg

**Predicted band size: 48 kDa**



Anti-UQCRC2 antibody (ab103616) at 5 µg/ml + A431 cell lysate at 50 µg

**Predicted band size:** 48 kDa



**All lanes :** Anti-UQCRC2 antibody (ab103616) at 5 µg/ml

**Lane 1 :** UQCRC2 transfected 293T cell lysate

**Lane 2 :** Non-transfected 293T cell lysate

Lysates/proteins at 25 µg per lane.

**Predicted band size:** 48 kDa

**Please note:** All products are "FOR RESEARCH USE ONLY. NOT FOR USE IN DIAGNOSTIC PROCEDURES"

### Our Abpromise to you: Quality guaranteed and expert technical support

- Replacement or refund for products not performing as stated on the datasheet
- Valid for 12 months from date of delivery
- Response to your inquiry within 24 hours
- We provide support in Chinese, English, French, German, Japanese and Spanish
- Extensive multi-media technical resources to help you
- We investigate all quality concerns to ensure our products perform to the highest standards

If the product does not perform as described on this datasheet, we will offer a refund or replacement. For full details of the Abpromise, please visit <https://www.abcam.com/abpromise> or contact our technical team.

### Terms and conditions

- Guarantee only valid for products bought direct from Abcam or one of our authorized distributors