

Product datasheet

Anti-UQCRFS1/RISP antibody [EPR16289] - C-terminal ab191079

Recombinant RabMAb

[1 References](#) [6 Images](#)

Overview

Product name	Anti-UQCRFS1/RISP antibody [EPR16289] - C-terminal
Description	Rabbit monoclonal [EPR16289] to UQCRFS1/RISP - C-terminal
Host species	Rabbit
Tested applications	Suitable for: IHC-P, ICC/IF, IP, Flow Cyt, WB
Species reactivity	Reacts with: Mouse, Rat, Human
Immunogen	within Human UQCRFS1/RISP aa 200 to the C-terminus. The exact sequence is proprietary. Database link: P47985
Positive control	HeLa, Raji, 293, PC12, mouse brain and Human fetal heart lysates; Human kidney tissue; HepG2 and HeLa cells.
General notes	<p>Previously labelled as UQCRFS1.</p> <p>This product is a recombinant monoclonal antibody, which offers several advantages including:</p> <ul style="list-style-type: none"> - High batch-to-batch consistency and reproducibility - Improved sensitivity and specificity - Long-term security of supply - Animal-free production <p>For more information see here.</p> <p>Our RabMAb[®] technology is a patented hybridoma-based technology for making rabbit monoclonal antibodies. For details on our patents, please refer to RabMAb[®] patents.</p>

Properties

Form	Liquid
Storage instructions	Shipped at 4°C. Store at +4°C short term (1-2 weeks). Upon delivery aliquot. Store at -20°C long term. Avoid freeze / thaw cycle.
Storage buffer	Preservative: 0.01% Sodium azide Constituents: 40% Glycerol, 59% PBS, 0.05% BSA
Purity	Protein A purified
Clonality	Monoclonal

Clone number EPR16289

Isotype IgG

Applications

Our [Abpromise guarantee](#) covers the use of **ab191079** in the following tested applications.

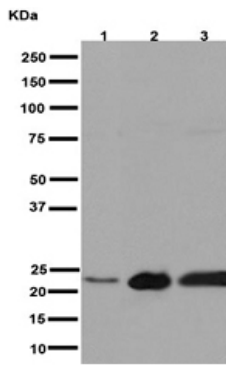
The application notes include recommended starting dilutions; optimal dilutions/concentrations should be determined by the end user.

Application	Abreviews	Notes
IHC-P		1/1000. Perform heat mediated antigen retrieval with Tris/EDTA buffer pH 9.0 before commencing with IHC staining protocol.
ICC/IF		1/100.
IP		1/90.
Flow Cyt		1/280. ab172730 - Rabbit monoclonal IgG, is suitable for use as an isotype control with this antibody.
WB		1/1000 - 1/10000. Detects a band of approximately 25 kDa (predicted molecular weight: 30 kDa).

Target

Function	Component of the ubiquinol-cytochrome c reductase complex (complex III or cytochrome b-c1 complex), which is a respiratory chain that generates an electrochemical potential coupled to ATP synthesis. The transit peptide of the Rieske protein seems to form part of the bc1 complex and is considered to be the subunit 11/IX of that complex.
Sequence similarities	Contains 1 Rieske domain.
Cellular localization	Mitochondrion inner membrane.

Images



Western blot - Anti-UQCRFS1/RISP antibody [EPR16289] - C-terminal (ab191079)

All lanes : Anti-UQCRFS1/RISP antibody [EPR16289] - C-terminal (ab191079) at 1/1000 dilution

Lane 1 : PC12 cell lysate

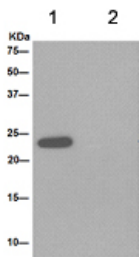
Lanes 2-3 : Mouse brain lysate

Lysates/proteins at 10 µg per lane.

Secondary

All lanes : Goat Anti-Rabbit IgG, (H+L), Peroxidase conjugate at 1/1000 dilution

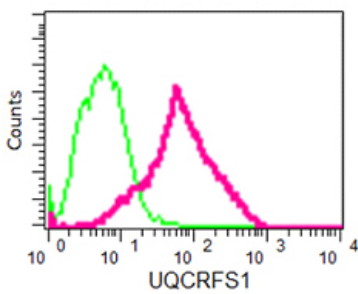
Predicted band size: 30 kDa



Immunoprecipitation - Anti-UQCRFS1/RISP antibody [EPR16289] - C-terminal (ab191079)

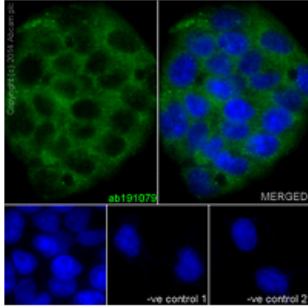
Western blot analysis of immunoprecipitation pellet from Human fetal heart lysate immunoprecipitated using ab191079 at 1/90 dilution (lane 1) or PBS control (lane 2).

Secondary: Anti-Rabbit IgG (HRP), specific to the non-reduced form of IgG at 1/1500 dilution.



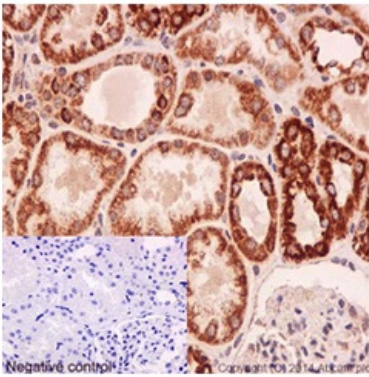
Flow Cytometry - Anti-UQCRFS1/RISP antibody [EPR16289] - C-terminal (ab191079)

Flow cytometric analysis of HeLa cells (paraformaldehyde-fixed, 2%) labeling UQCRFS1/RISP with ab191079 at 1/280 dilution (red) or a rabbit IgG (negative) (green), followed by Goat anti rabbit IgG (FITC) secondary at 1/150 dilution.



Immunofluorescent analysis of HepG2 cells (4% Paraformaldehyde-fixed; 0.1% tritonX-100 permeabilized) labeling UQCRFS1/RISP with ab191079 at 1/100 dilution followed by Goat anti rabbit IgG (AlexaFluor® 488) secondary at 1/200 dilution and counter-stained with DAPI (blue). Negative controls also shown.

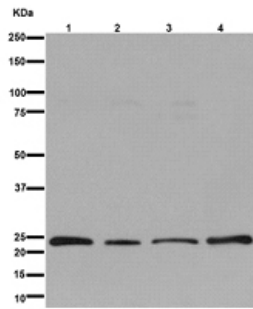
Immunocytochemistry/ Immunofluorescence - Anti-UQCRFS1/RISP antibody [EPR16289] - C-terminal (ab191079)



Immunohistochemical analysis of paraffin-embedded Human kidney tissue labeling UQCRFS1/RISP with ab191079 at 1/100 dilution followed by pre-diluted HRP Polymer for Rabbit IgG secondary antibody and counter-stained with Hematoxylin (inset: negative control).

Perform heat mediated antigen retrieval with Tris/EDTA buffer pH 9.0 before commencing with IHC staining protocol.

Immunohistochemistry (Formalin/PFA-fixed paraffin-embedded sections) - Anti-UQCRFS1/RISP antibody [EPR16289] - C-terminal (ab191079)



Western blot - Anti-UQCRFS1/RISP antibody [EPR16289] - C-terminal (ab191079)

All lanes : Anti-UQCRFS1/RISP antibody [EPR16289] - C-terminal (ab191079) at 1/10000 dilution

Lane 1 : HeLa cell lysate

Lane 2 : Raji cell lysate

Lane 3 : 293 cell lysate

Lane 4 : Human fetal heart lysate

Lysates/proteins at 20 µg per lane.

Secondary

All lanes : Goat Anti-Rabbit IgG, (H+L), Peroxidase conjugate at 1/1000 dilution

Predicted band size: 30 kDa

Please note: All products are "FOR RESEARCH USE ONLY. NOT FOR USE IN DIAGNOSTIC PROCEDURES"

Our Abpromise to you: Quality guaranteed and expert technical support

- Replacement or refund for products not performing as stated on the datasheet
- Valid for 12 months from date of delivery
- Response to your inquiry within 24 hours
- We provide support in Chinese, English, French, German, Japanese and Spanish
- Extensive multi-media technical resources to help you
- We investigate all quality concerns to ensure our products perform to the highest standards

If the product does not perform as described on this datasheet, we will offer a refund or replacement. For full details of the Abpromise, please visit <https://www.abcam.com/abpromise> or contact our technical team.

Terms and conditions

- Guarantee only valid for products bought direct from Abcam or one of our authorized distributors