


Product datasheet

Anti-USP13 antibody ab99421

3 References 4 Images

Overview

<b>Product name</b>	Anti-USP13 antibody
<b>Description</b>	Rabbit polyclonal to USP13
<b>Host species</b>	Rabbit
<b>Tested applications</b>	<b>Suitable for:</b> WB, IP, IHC-P, ICC/IF
<b>Species reactivity</b>	<b>Reacts with:</b> Mouse, Human <b>Predicted to work with:</b> Rat, Rabbit, Horse, Guinea pig, Cow, Dog, Pig, Chimpanzee, Rhesus monkey, Gorilla, Chinese hamster, Orangutan, Elephant 
<b>Immunogen</b>	Synthetic peptide, corresponding to a region within amino acids 175-225 of Human USP13 (NP_003931.2).
<b>Positive control</b>	HeLa and 293T whole cell lysate This antibody gave a positive result when used in the following methanol fixed cell lines: HeLa

Properties

<b>Form</b>	Liquid
<b>Storage instructions</b>	Shipped at 4°C. Upon delivery aliquot and store at -20°C. Avoid freeze / thaw cycles.
<b>Storage buffer</b>	Preservative: 0.09% Sodium Azide Constituents: Tris citrate/phosphate buffer, pH 7-8
<b>Purity</b>	Immunogen affinity purified
<b>Clonality</b>	Polyclonal
<b>Isotype</b>	IgG

Applications

Our [Abpromise guarantee](#) covers the use of **ab99421** in the following tested applications.

The application notes include recommended starting dilutions; optimal dilutions/concentrations should be determined by the end user.

Application	Abreviews	Notes
WB		1/2000 - 1/10000. Predicted molecular weight: 97 kDa.

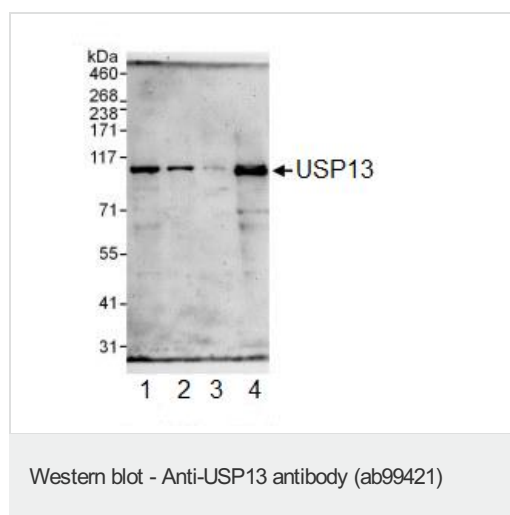
Application	Abreviews	Notes
IP		Use at 2-5 µg/mg of lysate.
IHC-P		1/1000 - 1/5000. Perform heat mediated antigen retrieval with citrate buffer pH 6 before commencing with IHC staining protocol.
ICC/IF		Use a concentration of 5 µg/ml.

## Target

**Tissue specificity** Highly expressed in ovary and testes.

**Sequence similarities** Belongs to the peptidase C19 family.  
Contains 2 UBA domains.  
Contains 1 UBP-type zinc finger.

## Images



**All lanes** : Anti-USP13 antibody (ab99421) at 0.1 µg/ml

**Lane 1** : HeLa whole cell lysate at 50 µg

**Lane 2** : HeLa whole cell lysate at 15 µg

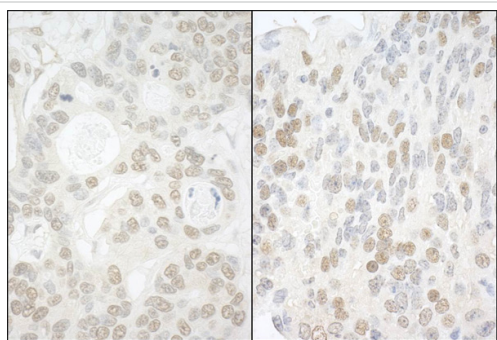
**Lane 3** : HeLa whole cell lysate at 5 µg

**Lane 4** : 293T whole cell lysate at 50 µg

Developed using the ECL technique.

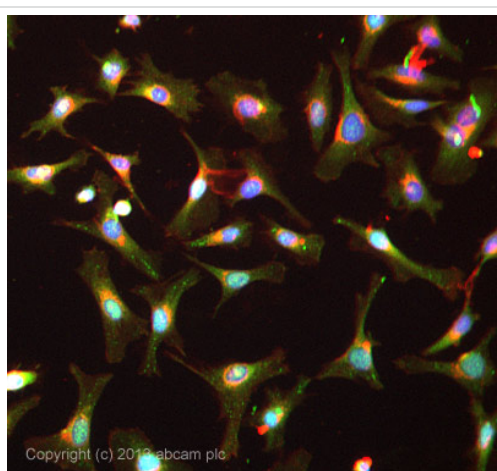
**Predicted band size:** 97 kDa

**Exposure time:** 3 minutes



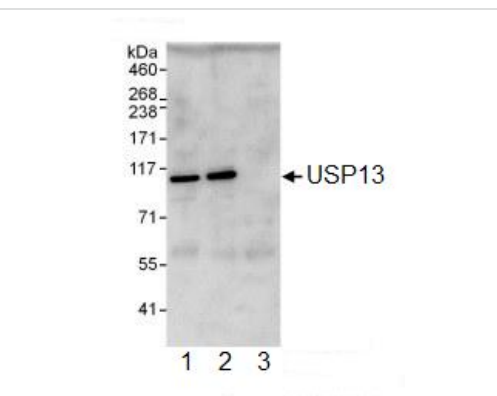
Immunohistochemistry (Formalin/PFA-fixed paraffin-embedded sections) - Anti-USP13 antibody (ab99421)

Immunohistochemistry (Formalin/PFA-fixed paraffin-embedded sections) analysis of human ovarian carcinoma (left) and mouse teratoma tissues labelling USP13 with ab99421 at 1/5000 (0.2µg/ml) and 1/1000 (1µg/ml). Detection: DAB.



Immunocytochemistry/ Immunofluorescence - Anti-USP13 antibody (ab99421)

ICC/IF image of ab99421 stained HeLa cells. The cells were 100% methanol fixed (5 min) and then incubated in 1%BSA / 10% normal goat serum / 0.3M glycine in 0.1% PBS-Tween for 1h to permeabilise the cells and block non-specific protein-protein interactions. The cells were then incubated with the antibody ab99421 at 5µg/ml overnight at +4°C. The secondary antibody (green) was DyLight® 488 goat anti- rabbit (ab96899) IgG (H+L) used at a 1/250 dilution for 1h. Alexa Fluor® 594 WGA was used to label plasma membranes (red) at a 1/200 dilution for 1h. DAPI was used to stain the cell nuclei (blue) at a concentration of 1.43µM.



Immunoprecipitation - Anti-USP13 antibody (ab99421)

ab99421 at 1 µg/ml detecting USP13 in HeLa whole cell lysate by western blot analysis following immunoprecipitation. Detection utilised ECL with a 10 second exposure.

For immunoprecipitation, ab99421 was used at at 3 µg/mg lysate; 1 mg of lysate was used for IP and 20% of IP was loaded.

Lane 1; IP using ab99421

Lane 2; IP using ab99423, a rabbit anti-USP13 antibody which recognizes a downstream epitope.

Lane 3; IP using control IgG.

**Please note:** All products are "FOR RESEARCH USE ONLY. NOT FOR USE IN DIAGNOSTIC PROCEDURES"

## **Our Abpromise to you: Quality guaranteed and expert technical support**

---

- Replacement or refund for products not performing as stated on the datasheet
- Valid for 12 months from date of delivery
- Response to your inquiry within 24 hours
  
- We provide support in Chinese, English, French, German, Japanese and Spanish
- Extensive multi-media technical resources to help you
- We investigate all quality concerns to ensure our products perform to the highest standards

If the product does not perform as described on this datasheet, we will offer a refund or replacement. For full details of the Abpromise, please visit <https://www.abcam.com/abpromise> or contact our technical team.

## **Terms and conditions**

---

- Guarantee only valid for products bought direct from Abcam or one of our authorized distributors