

## Product datasheet

# Anti-UTP3 antibody [2950C2α] ab60063

[1 Abreviews](#) [1 Image](#)

### Overview

<b>Product name</b>	Anti-UTP3 antibody [2950C2α]
<b>Description</b>	Mouse monoclonal [2950C2α] to UTP3
<b>Host species</b>	Mouse
<b>Tested applications</b>	<b>Suitable for:</b> WB
<b>Species reactivity</b>	<b>Reacts with:</b> Recombinant fragment
<b>Immunogen</b>	Recombinant fragment, sequence taken from near the C terminus of Human UTP3.
<b>General notes</b>	<p>The Life Science industry has been in the grips of a reproducibility crisis for a number of years. Abcam is leading the way in addressing this with our range of recombinant monoclonal antibodies and knockout edited cell lines for gold-standard validation. Please check that this product meets your needs before purchasing.</p> <p>If you have any questions, special requirements or concerns, please send us an inquiry and/or contact our Support team ahead of purchase. Recommended alternatives for this product can be found below, along with publications, customer reviews and Q&amp;As</p>

### Properties

<b>Form</b>	Liquid
<b>Storage instructions</b>	Shipped at 4°C. Store at +4°C short term (1-2 weeks). Upon delivery aliquot. Store at -20°C long term.
<b>Storage buffer</b>	<p>pH: 7.40</p> <p>Preservative: 0.05% Sodium azide</p> <p>Constituents: 0.0204% Monobasic dihydrogen potassium phosphate, 0.1136% Dibasic monohydrogen sodium phosphate, 0.0225% Potassium chloride, 0.03% Potassium phosphate, 0.1312% Sodium phosphate, 0.812% Sodium chloride, 1% BSA</p>
<b>Purity</b>	Protein G purified
<b>Purification notes</b>	ab60063 was purified using protein G column chromatography from culture supernatant of hybridoma cultured in a medium containing bovine IgG-depleted (approximately 95%) fetal bovine serum and filtered through a 0.22µm membrane.
<b>Clonality</b>	Monoclonal
<b>Clone number</b>	2950C2α
<b>Isotype</b>	IgG1

## Applications

**The Abpromise guarantee** Our [Abpromise guarantee](#) covers the use of ab60063 in the following tested applications.

The application notes include recommended starting dilutions; optimal dilutions/concentrations should be determined by the end user.

Application	Abreviews	Notes
WB		

### Application notes

Dot: Use at an assay dependent dilution.

WB: Use at an assay dependent dilution. Detects a band of approximately 39 kDa (fragment), (predicted molecular weight: 55 kDa).

Not yet tested in other applications.

Optimal dilutions/concentrations should be determined by the end user.

## Target

### Function

Essential for gene silencing: has a role in the structure of silenced chromatin. Plays a role in the developing brain.

### Sequence similarities

Belongs to the SAS10 family.

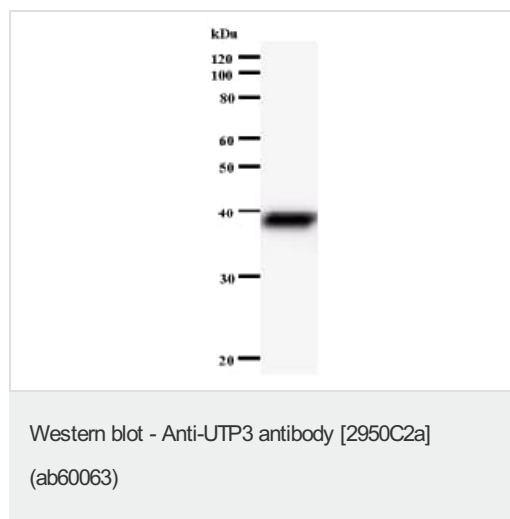
### Post-translational modifications

Citrullinated by PAD4.

### Cellular localization

Nucleus.

## Images



Anti-UTP3 antibody [2950C2a] (ab60063) + immunising recombinant protein

**Predicted band size:** 55 kDa

**Observed band size:** 39 kDa

The molecular weight of the band on the western blot does not correspond to the molecular weight of the natural protein because only a fragment of the protein was used.

**Please note:** All products are "FOR RESEARCH USE ONLY. NOT FOR USE IN DIAGNOSTIC PROCEDURES"

**Our Abpromise to you: Quality guaranteed and expert technical support**

- 
- Replacement or refund for products not performing as stated on the datasheet
  - Valid for 12 months from date of delivery
  - Response to your inquiry within 24 hours
  
  - We provide support in Chinese, English, French, German, Japanese and Spanish
  - Extensive multi-media technical resources to help you
  - We investigate all quality concerns to ensure our products perform to the highest standards

If the product does not perform as described on this datasheet, we will offer a refund or replacement. For full details of the Abpromise, please visit <https://www.abcam.com/abpromise> or contact our technical team.

### **Terms and conditions**

---

- Guarantee only valid for products bought direct from Abcam or one of our authorized distributors