

## Product datasheet

# Anti-V5 tag antibody (HRP) ab1325

★★★★★ 2 Abreviews 3 References 1 Image

### Overview

---

<b>Product name</b>	Anti-V5 tag antibody (HRP)
<b>Description</b>	Rabbit polyclonal to V5 tag (HRP)
<b>Host species</b>	Rabbit
<b>Conjugation</b>	HRP
<b>Specificity</b>	In a direct ELISA against 1 ug of V5 peptide coupled to BSA, conjugate diluted to 1/20,000 produced a 1.0 OD in a 15 minute reaction with TMB as substrate.
<b>Tested applications</b>	<b>Suitable for:</b> ICC, WB, ELISA
<b>Species reactivity</b>	<b>Reacts with:</b> Species independent
<b>Immunogen</b>	Synthetic peptide: GKPIPPLLGLDST conjugated to KLH.

### Properties

---

<b>Form</b>	Liquid
<b>Storage instructions</b>	Shipped at 4°C. Store at +4°C.
<b>Storage buffer</b>	Preservative: 0.1% Proclin Constituents: PBS, 0.2% BSA
<b>Purity</b>	Immunogen affinity purified
<b>Purification notes</b>	Antibodies were immunoaffinity purified using the peptide conjugated to a solid phase support and conjugated to horseradish peroxidase.
<b>Clonality</b>	Polyclonal
<b>Isotype</b>	unknown
<b>Light chain type</b>	unknown

### Applications

---

Our [Abpromise guarantee](#) covers the use of **ab1325** in the following tested applications.

The application notes include recommended starting dilutions; optimal dilutions/concentrations should be determined by the end user.

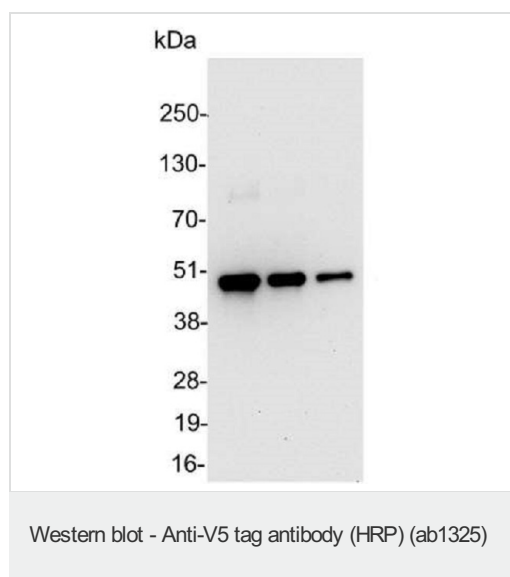
Application	Abreviews	Notes
ICC		Use at an assay dependent dilution.
WB	★★★★★	Use at an assay dependent dilution. Predicted molecular weight: 1 kDa. Can be blocked with <a href="#">V5 tag peptide (ab15829)</a> .
ELISA	★★★★★	Use at an assay dependent dilution.

## Target

### Relevance

The V5 epitope tag is derived from a small epitope (Pk) present on the P and V proteins of the paramyxovirus of simian virus 5 (SV5). The V5 tag is usually used with all 14 amino acids (GKPIPNPLLGLDST), although it has also been used with a shorter 9 amino acid sequence (IPNPLLGLD).

## Images



**All lanes :** Anti-V5 tag antibody (HRP) (ab1325) at 0.2 µg/ml

**Lane 1 :** E. coli whole cell lysate at 0.2 µg

**Lane 2 :** E. coli whole cell lysate at 0.1 µg

**Lane 3 :** E. coli whole cell lysate at 0.05 µg

**Predicted band size:** 1 kDa

**Please note:** All products are "FOR RESEARCH USE ONLY AND ARE NOT INTENDED FOR DIAGNOSTIC OR THERAPEUTIC USE"

## Our Abpromise to you: Quality guaranteed and expert technical support

- Replacement or refund for products not performing as stated on the datasheet
- Valid for 12 months from date of delivery
- Response to your inquiry within 24 hours
- We provide support in Chinese, English, French, German, Japanese and Spanish
- Extensive multi-media technical resources to help you
- We investigate all quality concerns to ensure our products perform to the highest standards

If the product does not perform as described on this datasheet, we will offer a refund or replacement. For full details of the Abpromise, please visit <https://www.abcam.com/abpromise> or contact our technical team.

### **Terms and conditions**

---

- Guarantee only valid for products bought direct from Abcam or one of our authorized distributors