


Product datasheet

Anti-VAMP8/EDB antibody - N-terminal ab226795

1 Image

Overview

Product name	Anti-VAMP8/EDB antibody - N-terminal
Description	Rabbit polyclonal to VAMP8/EDB - N-terminal
Host species	Rabbit
Tested applications	Suitable for: WB
Species reactivity	Reacts with: Rat Predicted to work with: Human, Rhesus monkey 
Immunogen	Synthetic peptide within Human VAMP8/EDB (N terminal). The exact sequence is proprietary. Conjugated to a carrier protein. Database link: Q9BV40
Positive control	WB: PC-12 and Rat2 whole cell lysates.
General notes	Previously labelled as VAMP8.

Properties

Form	Liquid
Storage instructions	Shipped at 4°C. Store at +4°C short term (1-2 weeks). Upon delivery aliquot. Store at -20°C long term. Avoid freeze / thaw cycle.
Storage buffer	pH: 7.00 Preservative: 0.025% Proclin Constituents: PBS, 20% Glycerol
Purity	Immunogen affinity purified
Clonality	Polyclonal
Isotype	IgG

Applications

Our [Abpromise guarantee](#) covers the use of **ab226795** in the following tested applications.

The application notes include recommended starting dilutions; optimal dilutions/concentrations should be determined by the end user.

Application	Abreviews	Notes
WB		1/500 - 1/3000. Predicted molecular weight: 11 kDa.

Target

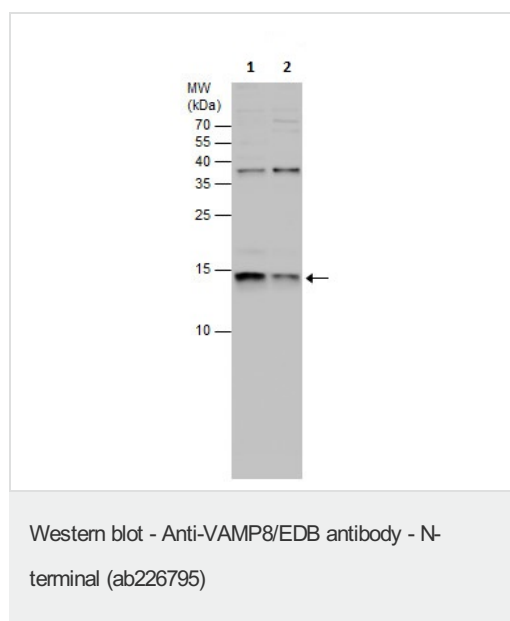
Function Involved in the targeting and/or fusion of transport vesicles to their target membrane. Involved for dense-granule secretion in platelets. Plays a role in regulated enzyme secretion in pancreatic acinar cells. Involved in the abscission of the midbody during cell division, which leads to completely separate daughter cells. Involved in the homotypic fusion of early and late endosomes.

Tissue specificity Platelets.

Sequence similarities Belongs to the synaptobrevin family.
Contains 1 v-SNARE coiled-coil homology domain.

Cellular localization Membrane.

Images



All lanes : Anti-VAMP8/EDB antibody - N-terminal (ab226795) at 1/1000 dilution

Lane 1 : PC-12 (rat adrenal gland pheochromocytoma cell line) whole cell lysate

Lane 2 : Rat2 (rat fibroblast cell line) whole cell lysate

Lysates/proteins at 30 µg per lane.

Predicted band size: 11 kDa

15% SDS-PAGE

Please note: All products are "FOR RESEARCH USE ONLY. NOT FOR USE IN DIAGNOSTIC PROCEDURES"

Our Abpromise to you: Quality guaranteed and expert technical support

- Replacement or refund for products not performing as stated on the datasheet
- Valid for 12 months from date of delivery
- Response to your inquiry within 24 hours
- We provide support in Chinese, English, French, German, Japanese and Spanish
- Extensive multi-media technical resources to help you

- We investigate all quality concerns to ensure our products perform to the highest standards

If the product does not perform as described on this datasheet, we will offer a refund or replacement. For full details of the Abpromise, please visit <https://www.abcam.com/abpromise> or contact our technical team.

Terms and conditions

- Guarantee only valid for products bought direct from Abcam or one of our authorized distributors