

## Product datasheet

# Anti-VEGF Receptor 1 + VEGF Receptor 2 antibody ab36844

[7 References](#) [2 Images](#)

### Overview

<b>Product name</b>	Anti-VEGF Receptor 1 + VEGF Receptor 2 antibody
<b>Description</b>	Rabbit polyclonal to VEGF Receptor 1 + VEGF Receptor 2
<b>Host species</b>	Rabbit
<b>Specificity</b>	This antibody is specific for VEGFR 1 with significant cross-reactivity with the VEGFR 2 protein.
<b>Tested applications</b>	<b>Suitable for:</b> IHC-P
<b>Species reactivity</b>	<b>Reacts with:</b> Mouse, Human
<b>Immunogen</b>	Synthetic peptide corresponding to Mouse VEGF Receptor 1 + VEGF Receptor 2 aa 800-900. Sequence:  PDEVPLDEQCERLPYDASKWEFARERLKLKSLGRGAF GK VVQASAFG IKKSPTCRTVAVKMLKEGATASEYKALMTELKILTHIGHHLN VVNLLGAC TK

 [Run BLAST with](#)

 [Run BLAST with](#)

### General notes

Reproducibility is key to advancing scientific discovery and accelerating scientists' next breakthrough.

Abcam is leading the way with our range of recombinant antibodies, knockout-validated antibodies and knockout cell lines, all of which support improved reproducibility.

We are also planning to innovate the way in which we present recommended applications and species on our product datasheets, so that only applications & species that have been tested in our own labs, our suppliers or by selected trusted collaborators are covered by our Abpromise™ guarantee.

In preparation for this, we have started to update the applications & species that this product is Abpromise guaranteed for.

We are also updating the applications & species that this product has been “predicted to work with,” however this information is not covered by our Abpromise guarantee.

Applications & species from publications and Abreviews that have not been tested in our own labs or in those of our suppliers are not covered by the Abpromise guarantee.

Please check that this product meets your needs before purchasing. If you have any questions, special requirements or concerns, please send us an inquiry and/or contact our Support team ahead of purchase. Recommended alternatives for this product can be found below, as well as

customer reviews and Q&As.

## Properties

---

<b>Form</b>	Liquid
<b>Storage instructions</b>	Shipped at 4°C. Upon delivery aliquot and store at -20°C. Avoid repeated freeze / thaw cycles.
<b>Storage buffer</b>	pH: 7.4 Preservative: 0.05% Sodium azide
<b>Purity</b>	Protein A purified
<b>Purification notes</b>	ab36844 is an affinity purified IgG.
<b>Clonality</b>	Polyclonal
<b>Isotype</b>	IgG

## Applications

---

Our [Abpromise guarantee](#) covers the use of **ab36844** in the following tested applications.

The application notes include recommended starting dilutions; optimal dilutions/concentrations should be determined by the end user.

Application	Abreviews	Notes
IHC-P		1/250 - 1/500.

---

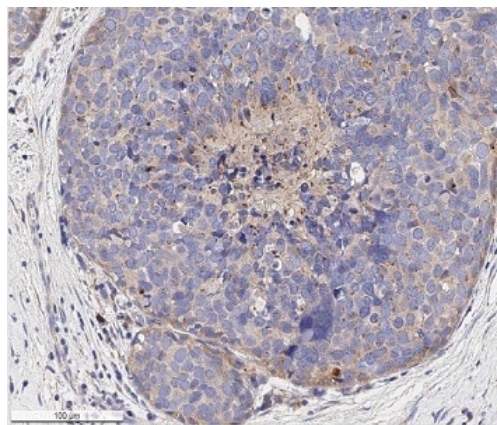
## Target

---

<b>Relevance</b>	Receptors for VEGF, VEGFB and PGF have a tyrosine-protein kinase activity. The VEGF-kinase ligand/receptor signaling system plays a key role in vascular development and regulation of vascular permeability. VEGF and its high-affinity binding receptors, the tyrosine kinases FLK1 and FLT1, are thought to be important for the development of embryonic vasculature. It has been shown that an alternately spliced form of FLT1 produces a soluble protein, termed sFLT1, which binds vascular endothelial growth factor with high affinity, playing an inhibitory role in angiogenesis.
<b>Cellular localization</b>	Cell Membrane

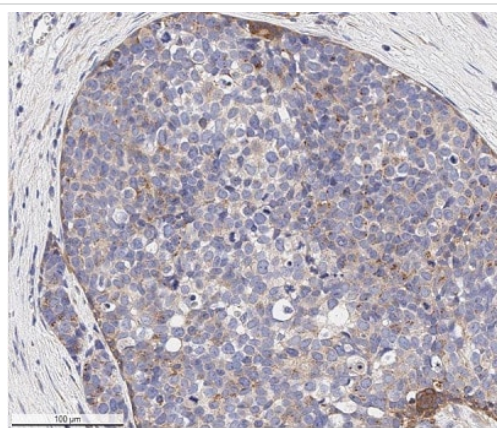
## Images

---



Immunohistochemistry (Formalin/PFA-fixed paraffin-embedded sections) - Anti-VEGF Receptor 1 + VEGF Receptor 2 antibody (ab36844)

IHC analysis of a formalin-fixed paraffin-embedded (FFPE) human breast carcinoma tissue section using 1:500 dilution of ab36844. The assay involved 20 minutes of heat induced antigen retrieval (HIER) with 10mM sodium citrate buffer (pH 6.0) and endogenous peroxidase quenching using peroxide block. The sections were incubated with primary antibody for 30 minutes.



Immunohistochemistry (Formalin/PFA-fixed paraffin-embedded sections) - Anti-VEGF Receptor 1 + VEGF Receptor 2 antibody (ab36844)

IHC analysis of a formalin-fixed paraffin-embedded (FFPE) human breast carcinoma tissue section using 1:500 dilution of ab36844. The assay involved 20 minutes of heat induced antigen retrieval (HIER) with 10mM sodium citrate buffer (pH 6.0) and endogenous peroxidase quenching using peroxide block. The sections were incubated with primary antibody for 30 minutes.

**Please note:** All products are "FOR RESEARCH USE ONLY. NOT FOR USE IN DIAGNOSTIC PROCEDURES"

#### **Our Abpromise to you: Quality guaranteed and expert technical support**

- Replacement or refund for products not performing as stated on the datasheet
- Valid for 12 months from date of delivery

- Response to your inquiry within 24 hours
- We provide support in Chinese, English, French, German, Japanese and Spanish
- Extensive multi-media technical resources to help you
- We investigate all quality concerns to ensure our products perform to the highest standards

If the product does not perform as described on this datasheet, we will offer a refund or replacement. For full details of the Abpromise, please visit <https://www.abcam.com/abpromise> or contact our technical team.

### **Terms and conditions**

---

- Guarantee only valid for products bought direct from Abcam or one of our authorized distributors