

Product datasheet

Anti-VEGF Receptor 1 antibody [EWF] ab11934

2 References 3 Images

Overview

Product name	Anti-VEGF Receptor 1 antibody [EWF]
Description	Mouse monoclonal [EWF] to VEGF Receptor 1
Host species	Mouse
Tested applications	Suitable for: WB
Species reactivity	Reacts with: Human
Immunogen	<p>Recombinant full length protein corresponding to Human VEGF Receptor 1 aa 1-687. Sequence:</p> <p>MVSYWDTGVLLCALLSCLLLTGSSSGSKLKDPELSLKG QHIMQAGQTLH LQCRGEAAHKWVSLPEMVSKESEKLSITKSACGRNGKQF CSTLTLNTAQAN HTGFYSCKYLAVPTSKKKETESAMFISDTGRPFVEMYSEI PEIHMTE GRELVIPCRVTSPNITVTLKKFPLDTLIPDGKRIWDSRKGFI SNATYK EIGLLTCEATVNGHLYKTNYLTHRQNTIIDVQISTPRPVKLL RGHTLVL NCTATTPLNTRVQMTWSYPDEKNKRASVRRRIDQSNSHA NIFYSVLTIDK MQNKDKGLYTCRVRSGPSFKSVNTSVHYDKAFITVKHRK QQVLETVAGK RSYRLSMKVKAFFSPEVVWLKDGLPATEKSARYLTRGYS LIKDVTEEDA GNYTILLSIKQSNVFNLTATLIVNVKQIYEKAVSSFPDPAL YPLGSRQ ILTCTAYGIPQPTIKWFWHPCNHNHSEARCDFCSNNEESFI LDADSNMGN RIESITQRMAIIEGKNKMASTLVVADSRISGIYCIASNKVGTV GRNISF YITDVPNGFHVNLEKMPTEGEDLKLSCVTNKFLYRDVTWIL LRTVNNRTM HYSISKQKMAITKEHSITLNLTIMNVSLQDSGTYACRARNVY TGEEILQK KEITIRGEHCNKKAVFSRISKFKSTRNDCTTQSNVKH</p>

Database link: [P17948-2](#)

 [Run BLAST with](#)

 [Run BLAST with](#)

Positive control

WB: Recombinant human soluble VEGF Receptor 1; Conditioned media from insect cells expressing recombinant human soluble VEGF Receptor 1; Supernatant from Adenovirus Infected A549 cells expressing mouse VEGF Receptor 1.

General notes

The Life Science industry has been in the grips of a reproducibility crisis for a number of years. Abcam is leading the way in addressing this with our range of recombinant monoclonal antibodies and knockout edited cell lines for gold-standard validation. Please check that this product meets your needs before purchasing.

If you have any questions, special requirements or concerns, please send us an inquiry and/or contact our Support team ahead of purchase. Recommended alternatives for this product can be found below, along with publications, customer reviews and Q&As

Properties

Form	Lyophilized:Lyophilised. Reconstitute in sterile water to a concentration of 0.1-1.0 mg/ml.
Storage instructions	Shipped at 4°C. Store at +4°C short term (1-2 weeks). Upon delivery aliquot. Store at -20°C long term. Avoid freeze / thaw cycle.
Storage buffer	Constituent: PBS
Purity	Protein G purified
Purification notes	Purified from TCS.
Clonality	Monoclonal
Clone number	EWF
Isotype	IgG1

Applications

The Abpromise guarantee Our [Abpromise guarantee](#) covers the use of ab11934 in the following tested applications. The application notes include recommended starting dilutions; optimal dilutions/concentrations should be determined by the end user.

Application	Abreviews	Notes
WB		Use a concentration of 1 - 10 µg/ml. Predicted molecular weight: 150 kDa.

Target

Function	Receptor for VEGF, VEGFB and PGF. Has a tyrosine-protein kinase activity. The VEGF-kinase ligand/receptor signaling system plays a key role in vascular development and regulation of vascular permeability. Isoform sFlt1 may have an inhibitory role in angiogenesis.
Tissue specificity	Mostly in normal lung, but also in placenta, liver, kidney, heart and brain tissues. Specifically expressed in most of the vascular endothelial cells, and also expressed in peripheral blood monocytes. Isoform sFlt1 is strongly expressed in placenta.
Sequence similarities	Belongs to the protein kinase superfamily. Tyr protein kinase family. CSF-1/PDGF receptor

subfamily.

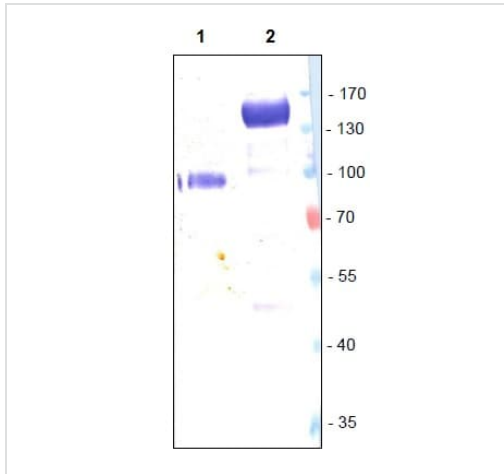
Contains 7 Ig-like C2-type (immunoglobulin-like) domains.

Contains 1 protein kinase domain.

Cellular localization

Secreted and Cell membrane.

Images



Western blot - Anti-VEGF Receptor 1 antibody [EWF] (ab11934)

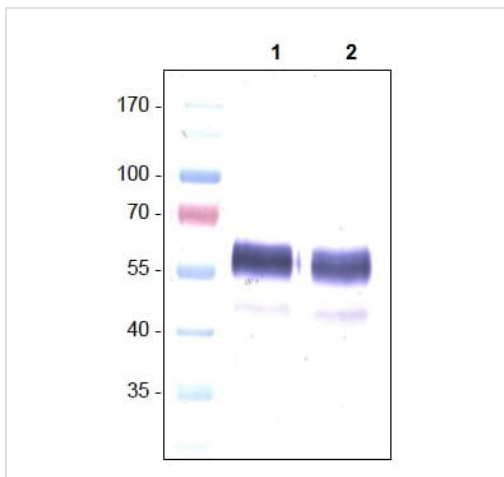
Lane 1 : Anti-VEGF Receptor 1 antibody [EWF] (ab11934) at 10 mg/ml

Lane 2 : Anti-VEGF Receptor 1 antibody [EWF] (ab11934) at 10 µg/ml

Lane 1 : Recombinant human soluble VEGF Receptor 1

Lane 2 : Supernatant from Adenovirus Infected A549 cells expressing mouse VEGF Receptor 1

Predicted band size: 150 kDa

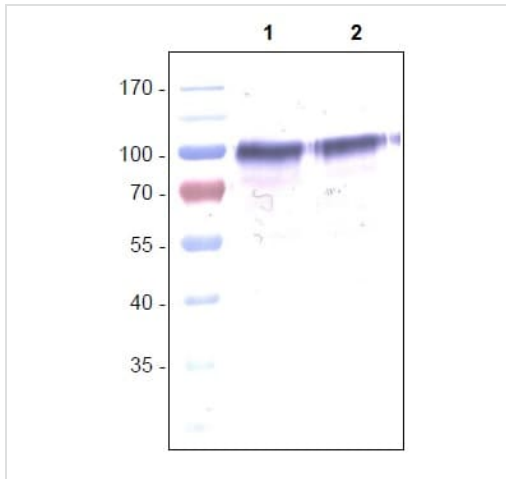


Western blot - Anti-VEGF Receptor 1 antibody [EWF] (ab11934)

All lanes : Anti-VEGF Receptor 1 antibody [EWF] (ab11934) at 10 µg/ml

All lanes : Conditioned media from insect cells expressing recombinant human soluble VEGF Receptor 1

Predicted band size: 150 kDa



Western blot - Anti-VEGF Receptor 1 antibody [EWF] (ab11934)

All lanes : Anti-VEGF Receptor 1 antibody [EWF] (ab11934) at 10 $\mu\text{g/ml}$

All lanes : Conditioned media from insect cells expressing recombinant human soluble VEGF Receptor 1

Predicted band size: 150 kDa

Please note: All products are "FOR RESEARCH USE ONLY. NOT FOR USE IN DIAGNOSTIC PROCEDURES"

Our Abpromise to you: Quality guaranteed and expert technical support

- Replacement or refund for products not performing as stated on the datasheet
- Valid for 12 months from date of delivery
- Response to your inquiry within 24 hours
- We provide support in Chinese, English, French, German, Japanese and Spanish
- Extensive multi-media technical resources to help you
- We investigate all quality concerns to ensure our products perform to the highest standards

If the product does not perform as described on this datasheet, we will offer a refund or replacement. For full details of the Abpromise, please visit <https://www.abcam.com/abpromise> or contact our technical team.

Terms and conditions

- Guarantee only valid for products bought direct from Abcam or one of our authorized distributors