

Product datasheet

Anti-VEGF Receptor 2 antibody [001] (PE) ab275612

Recombinant

2 Images

Overview

Product name	Anti-VEGF Receptor 2 antibody [001] (PE)
Description	Rabbit monoclonal [001] to VEGF Receptor 2 (PE)
Host species	Rabbit
Conjugation	PE. Ex: 488nm, Em: 575nm
Tested applications	Suitable for: Flow Cyt
Species reactivity	Reacts with: Mouse
Immunogen	Recombinant fragment (His-tag) corresponding to Mouse VEGF Receptor 2 aa 1-762 (extracellular). Including signal peptide. Database link: P35918
Positive control	Flow Cyt: bEnd.3 cells.
General notes	<p>Reproducibility is key to advancing scientific discovery and accelerating scientists' next breakthrough.</p> <p>Abcam is leading the way with our range of recombinant antibodies, knockout-validated antibodies and knockout cell lines, all of which support improved reproducibility.</p> <p>We are also planning to innovate the way in which we present recommended applications and species on our product datasheets, so that only applications & species that have been tested in our own labs, our suppliers or by selected trusted collaborators are covered by our Abpromise™ guarantee.</p> <p>In preparation for this, we have started to update the applications & species that this product is Abpromise guaranteed for.</p> <p>We are also updating the applications & species that this product has been “predicted to work with,” however this information is not covered by our Abpromise guarantee.</p> <p>Applications & species from publications and Abreviews that have not been tested in our own labs or in those of our suppliers are not covered by the Abpromise guarantee.</p> <p>Please check that this product meets your needs before purchasing. If you have any questions, special requirements or concerns, please send us an inquiry and/or contact our Support team ahead of purchase. Recommended alternatives for this product can be found below, as well as customer reviews and Q&As.</p>

Properties

Form	Liquid
Storage instructions	Shipped at 4°C. Store at +4°C. Do Not Freeze. Store In the Dark.
Storage buffer	Preservative: 0.09% Sodium azide Constituent: 0.5% BSA
Purity	Protein A purified
Clonality	Monoclonal
Clone number	001
Isotype	IgG

Applications

Our [Abpromise guarantee](#) covers the use of **ab275612** in the following tested applications.

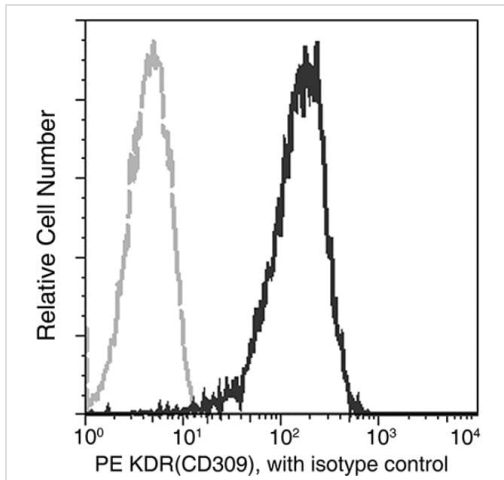
The application notes include recommended starting dilutions; optimal dilutions/concentrations should be determined by the end user.

Application	Abreviews	Notes
Flow Cyt		Use at an assay dependent concentration. 5 µl/Test

Target

Function	Receptor for VEGF or VEGFC. Has a tyrosine-protein kinase activity. The VEGF-kinase ligand/receptor signaling system plays a key role in vascular development and regulation of vascular permeability. In case of HIV-1 infection, the interaction with extracellular viral Tat protein seems to enhance angiogenesis in Kaposi's sarcoma lesions.
Involvement in disease	Defects in KDR are associated with susceptibility to hemangioma capillary infantile (HCI) [MIM:602089]. HCI are benign, highly proliferative lesions involving aberrant localized growth of capillary endothelium. They are the most common tumor of infancy, occurring in up to 10% of all births. Hemangiomas tend to appear shortly after birth and show rapid neonatal growth for up to 12 months characterized by endothelial hypercellularity and increased numbers of mast cells. This phase is followed by slow involution at a rate of about 10% per year and replacement by fibrofatty stroma.
Sequence similarities	Belongs to the protein kinase superfamily. Tyr protein kinase family. CSF-1/PDGF receptor subfamily. Contains 7 Ig-like C2-type (immunoglobulin-like) domains. Contains 1 protein kinase domain.
Post-translational modifications	Phosphorylated. Dephosphorylated by PTPRB. Dephosphorylated by PTPRJ at Tyr-951, Tyr-996, Tyr-1054, Tyr-1059, Tyr-1175 and Tyr-1214.
Cellular localization	Membrane.





Images



Flow cytometric analysis of bEnd.3 (mouse brain endothelialpolyoma middle T antigen transformed cell line) cells labeling VEGF receptor 2 with ab275612 at 5 µl/Test (black) compared with isotype control (Grey). The fluorescence histograms were derived from gated events with the forward and side light-scatter characteristics of intact cells.

Flow Cytometry - Anti-VEGF Receptor 2 antibody
[001] (PE) (ab275612)

Why choose a recombinant antibody?

 Research with confidence Consistent and reproducible results	 Long-term and scalable supply Recombinant technology
 Success from the first experiment Confirmed specificity	 Ethical standards compliant Animal-free production

Anti-VEGF Receptor 2 antibody [001] (PE)
(ab275612)

Please note: All products are "FOR RESEARCH USE ONLY. NOT FOR USE IN DIAGNOSTIC PROCEDURES"

Our Abpromise to you: Quality guaranteed and expert technical support

- Replacement or refund for products not performing as stated on the datasheet
- Valid for 12 months from date of delivery
- Response to your inquiry within 24 hours
- We provide support in Chinese, English, French, German, Japanese and Spanish
- Extensive multi-media technical resources to help you
- We investigate all quality concerns to ensure our products perform to the highest standards

If the product does not perform as described on this datasheet, we will offer a refund or replacement. For full details of the Abpromise, please visit <https://www.abcam.com/abpromise> or contact our technical team.

Terms and conditions

- Guarantee only valid for products bought direct from Abcam or one of our authorized distributors