

Product datasheet

Anti-VEGFD antibody [EPR8457] ab155288

Recombinant RabMAb

2 References 10 Images

Overview

<b>Product name</b>	Anti-VEGFD antibody [EPR8457]
<b>Description</b>	Rabbit monoclonal [EPR8457] to VEGFD
<b>Host species</b>	Rabbit
<b>Tested applications</b>	<b>Suitable for:</b> WB, IHC-P, Flow Cyt, ICC/IF
<b>Species reactivity</b>	<b>Reacts with:</b> Mouse, Rat, Human
<b>Immunogen</b>	Synthetic peptide within Human VEGFD. The exact sequence is proprietary. Database link: <a href="#">O43915</a> (Peptide available as <a href="#">ab189506</a> )
<b>Positive control</b>	Raji, HT-1080, MCF-7, and Caco-2 cell lysates. Human heart and lung tissue.
<b>General notes</b>	A trial size is available to purchase for this antibody.  Our RabMAb <sup>®</sup> technology is a patented hybridoma-based technology for making rabbit monoclonal antibodies. For details on our patents, please refer to <a href="#">RabMab<sup>®</sup> patents</a>  <b>We are constantly working hard to ensure we provide our customers with best in class antibodies. As a result of this work we are pleased to now offer this antibody in purified format. We are in the process of updating our datasheets. The purified format is designated 'PUR' on our product labels. If you have any questions regarding this update, please contact our Scientific Support team.</b>  This product is a recombinant rabbit monoclonal antibody.

Properties

<b>Form</b>	Liquid
<b>Storage instructions</b>	Shipped at 4°C. Store at +4°C short term (1-2 weeks). Upon delivery aliquot. Store at -20°C. Avoid freeze / thaw cycle.
<b>Storage buffer</b>	Preservative: 0.01% Sodium azide Constituents: 40% Glycerol, 0.05% BSA
<b>Purity</b>	Protein A purified
<b>Clonality</b>	Monoclonal
<b>Clone number</b>	EPR8457

Isotype

IgG

## Applications

---

Our [Abpromise guarantee](#) covers the use of **ab155288** in the following tested applications.

The application notes include recommended starting dilutions; optimal dilutions/concentrations should be determined by the end user.

Application	Abreviews	Notes
WB		1/1000 - 1/10000. Predicted molecular weight: 40 kDa.
IHC-P		1/100 - 1/700.
Flow Cyt		1/100 - 1/500. <a href="#">ab172730</a> - Rabbit monoclonal IgG, is suitable for use as an isotype control with this antibody.
ICC/IF		1/200.

## Target

---

### Function

Growth factor active in angiogenesis, lymphangiogenesis and endothelial cell growth, stimulating their proliferation and migration and also has effects on the permeability of blood vessels. May function in the formation of the venous and lymphatic vascular systems during embryogenesis, and also in the maintenance of differentiated lymphatic endothelium in adults. Binds and activates VEGFR-2 (KDR/FLK1) and VEGFR-3 (FLT4) receptors.

### Tissue specificity

Highly expressed in lung, heart, small intestine and fetal lung, and at lower levels in skeletal muscle, colon, and pancreas.

### Sequence similarities

Belongs to the PDGF/VEGF growth factor family.

### Post-translational modifications

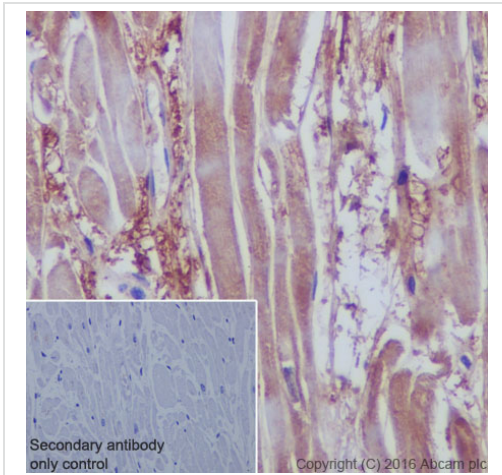
Undergoes a complex proteolytic maturation which generates a variety of processed secreted forms with increased activity toward VEGFR-3 and VEGFR-2. VEGF-D first form an antiparallel homodimer linked by disulfide bonds before secretion. The fully processed VEGF-D is composed mostly of two VEGF homology domains (VHDs) bound by non-covalent interactions.

### Cellular localization

Secreted.

## Images

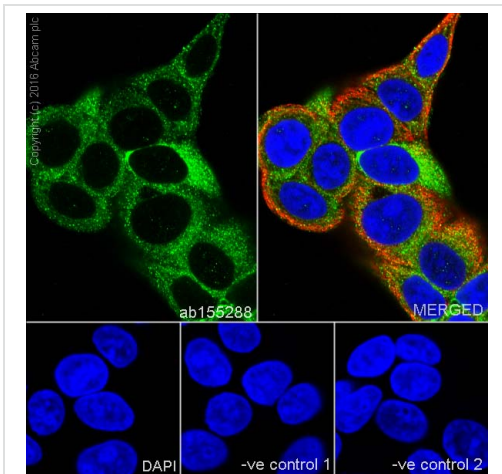
---



Immunohistochemistry (Formalin/PFA-fixed paraffin-embedded sections) - Anti-VEGFD antibody [EPR8457] (ab155288)

ab155288 staining VEGFD in human cardiac muscle tissue sections by Immunohistochemistry (IHC-P - Formalin/paraformaldehyde-fixed, paraffin-embedded sections). Tissue was fixed with paraformaldehyde and antigen retrieval was by heat mediation in a EDTA buffer. Samples were incubated with primary antibody at a dilution of 1/700. A goat anti-rabbit IgG H&L (HRP) [ab97051](#) was used as the secondary antibody at a dilution of 1/500.

**Negative control:** PBS in place of primary antibody.

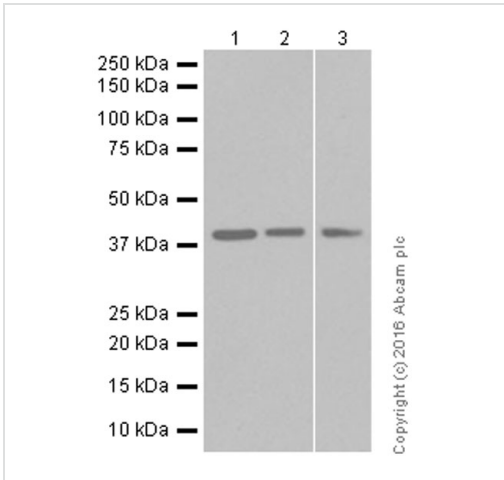


Immunocytochemistry/ Immunofluorescence - Anti-VEGFD antibody [EPR8457] (ab155288)

ab155288 staining VEGFD in MCF-7 (human breast carcinoma) cells by ICC/IF (Immunocytochemistry/immunofluorescence). Cells were fixed with 4% Paraformaldehyde and permeabilized with 0.1% Triton X-100. Samples were incubated with primary antibody at a dilution of 1/200. A goat anti rabbit IgG (Alexa Fluor® 488) ([ab150077](#)) was used as the secondary antibody. [ab7291](#) and [ab150120](#) were used as counterstains for primary antibody ab155288 and secondary antibody [ab150077](#) respectively and DAPI was used as a nuclear counterstain.

**Negative control 1:** Rabbit primary antibody and anti-mouse secondary antibody ([ab150120](#))

**Negative control 2:** Mouse primary antibody ([ab7291](#)) and anti-rabbit secondary antibody ([ab150077](#))



Western blot - Anti-VEGFD antibody [EPR8457] (ab155288)

**All lanes :** Anti-VEGFD antibody [EPR8457] (ab155288) at 1/10000 dilution

**Lane 1 :** Raji (human Burkitt's lymphoma) whole cell lysate

**Lane 2 :** HT1080 (human fibrosarcoma) whole cell lysate

**Lane 3 :** Caco-2 (human colorectal adenocarcinoma) whole cell lysate

Lysates/proteins at 20 µg per lane.

### Secondary

**All lanes :** Goat Anti-Rabbit IgG H&L (HRP) (ab97051) at 1/20000 dilution

**Predicted band size:** 40 kDa

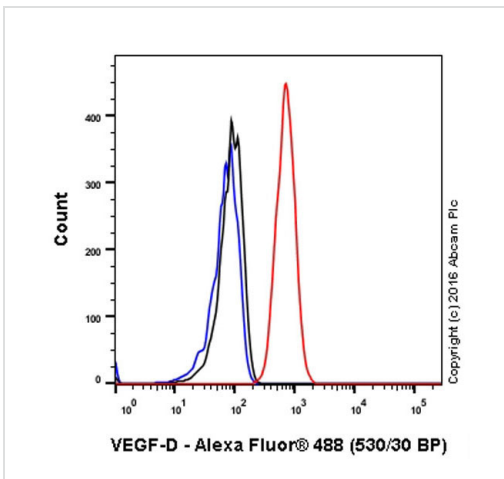
**Additional bands at:** 40 kDa. We are unsure as to the identity of these extra bands.

**Diluting and blocking buffer:** 5% NFDM/TBST

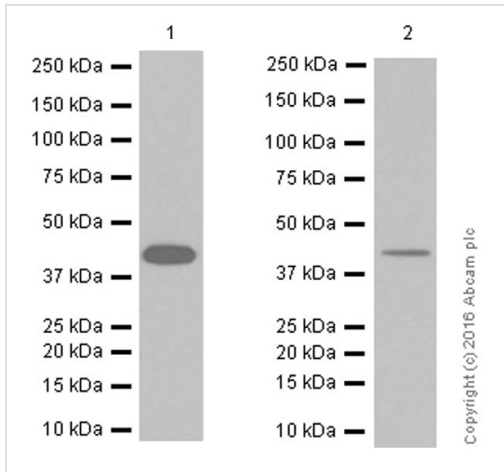
ab155288 staining VEGFD in the human cell line NIH/3T3 (mouse embryo) by flow cytometry. Cells were fixed with 4% paraformaldehyde and the sample was incubated with the primary antibody at a dilution of 1/200. A goat anti rabbit IgG (Alexa Fluor<sup>®</sup> 488) at a dilution of 1/2000 was used as the secondary antibody.

**Isoytype control:** Rabbit monoclonal IgG (Black)

**Unlabelled control:** Cell without incubation with primary antibody and secondary antibody (Blue)



Flow Cytometry - Anti-VEGFD antibody [EPR8457] (ab155288)



Western blot - Anti-VEGFD antibody [EPR8457]  
(ab155288)

**All lanes :** Anti-VEGFD antibody [EPR8457] (ab155288) at 1/2000 dilution

**Lane 1 :** Rat lung tissue lysate

**Lane 2 :** NIH/3T3 (mouse embryo) whole cell lysate

Lysates/proteins at 15 µg per lane.

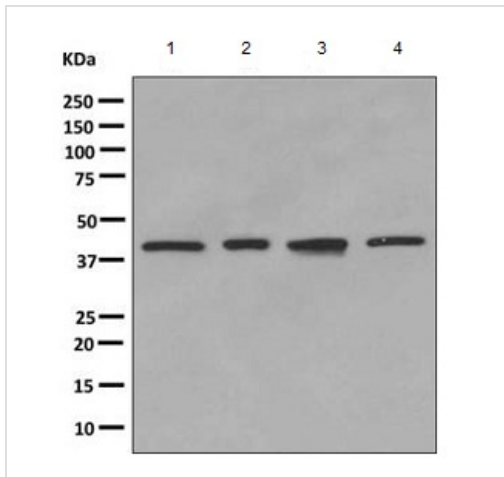
**Secondary**

**All lanes :** Goat Anti-Rabbit IgG H&L (HRP) (ab97051) at 1/20000 dilution

**Predicted band size:** 40 kDa

**Additional bands at:** 40 kDa. We are unsure as to the identity of these extra bands.

**Diluting and blocking buffer:** 5% NFDM/TBST



Western blot - Anti-VEGFD antibody [EPR8457]  
(ab155288)

**All lanes :** Anti-VEGFD antibody [EPR8457] (ab155288) at 1/1000 dilution

**Lane 1 :** Raji lysate

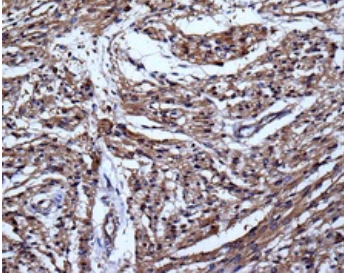
**Lane 2 :** HT-1080 lysate

**Lane 3 :** MCF-7 lysate

**Lane 4 :** Caco-2 lysate

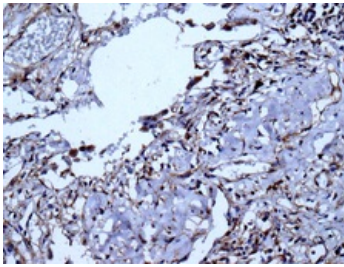
Lysates/proteins at 10 µg per lane.

**Predicted band size:** 40 kDa



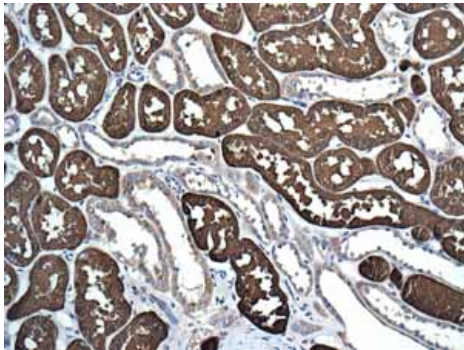
Immunohistochemistry (Formalin/PFA-fixed paraffin-embedded sections) - Anti-VEGFD antibody [EPR8457] (ab155288)

Immunohistochemical analysis of paraffin embedded Human heart tissue labeling VEGFD with ab155288 at a 1/100 dilution.



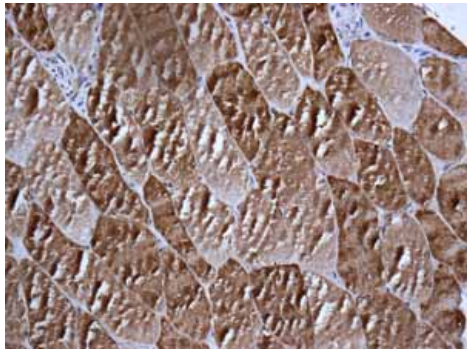
Immunohistochemistry (Formalin/PFA-fixed paraffin-embedded sections) - Anti-VEGFD antibody [EPR8457] (ab155288)

Immunohistochemical analysis of paraffin embedded Human lung tissue labeling VEGFD with ab155288 at a 1/100 dilution.



Immunohistochemistry (Formalin/PFA-fixed paraffin-embedded sections) - Anti-VEGFD antibody [EPR8457] (ab155288)

Immunohistochemical analysis of paraffin embedded Human normal kidney tissue using ab155288 showing +ve staining.



Immunohistochemical analysis of paraffin embedded Human skeletal muscle tissue using ab155288 showing +ve staining.

Immunohistochemistry (Formalin/PFA-fixed paraffin-embedded sections) - Anti-VEGFD antibody [EPR8457] (ab155288)

**Please note:** All products are "FOR RESEARCH USE ONLY AND ARE NOT INTENDED FOR DIAGNOSTIC OR THERAPEUTIC USE"

### Our Abpromise to you: Quality guaranteed and expert technical support

---

- Replacement or refund for products not performing as stated on the datasheet
- Valid for 12 months from date of delivery
- Response to your inquiry within 24 hours
- We provide support in Chinese, English, French, German, Japanese and Spanish
- Extensive multi-media technical resources to help you
- We investigate all quality concerns to ensure our products perform to the highest standards

If the product does not perform as described on this datasheet, we will offer a refund or replacement. For full details of the Abpromise, please visit <https://www.abcam.com/abpromise> or contact our technical team.

### Terms and conditions

---

- Guarantee only valid for products bought direct from Abcam or one of our authorized distributors