

Product datasheet

Anti-Villin antibody ab272922

3 Images

Overview

Product name	Anti-Villin antibody
Description	Rabbit polyclonal to Villin
Host species	Rabbit
Tested applications	Suitable for: WB, ICC/IF
Species reactivity	Reacts with: Mouse, Human
Immunogen	Synthetic peptide within Human Villin (C terminal). The exact sequence is proprietary. Carrier-protein conjugated. Database link: P09327
Positive control	ICC/IF: HepG2 cells. WB: Mouse kidney tissue extract. HepG2 whole cell extract.
General notes	<p>The Life Science industry has been in the grips of a reproducibility crisis for a number of years. Abcam is leading the way in addressing this with our range of recombinant monoclonal antibodies and knockout edited cell lines for gold-standard validation. Please check that this product meets your needs before purchasing.</p> <p>If you have any questions, special requirements or concerns, please send us an inquiry and/or contact our Support team ahead of purchase. Recommended alternatives for this product can be found below, along with publications, customer reviews and Q&As</p>

Properties

Form	Liquid
Storage instructions	Shipped at 4°C. Store at +4°C short term (1-2 weeks). Upon delivery aliquot. Store at -20°C long term. Avoid freeze / thaw cycle.
Storage buffer	pH: 7.00 Preservative: 0.025% Proclin 300 Constituents: 78% PBS, 1% BSA, 20% Glycerol (glycerin, glycerine)
Purity	Immunogen affinity purified
Clonality	Polyclonal
Isotype	IgG

Applications

The Abpromise guarantee

Our [Abpromise guarantee](#) covers the use of ab272922 in the following tested applications.

The application notes include recommended starting dilutions; optimal dilutions/concentrations should be determined by the end user.

Application	Abreviews	Notes
WB		1/500 - 1/3000.
ICC/IF		1/100 - 1/1000.

Target

Function

Ca(2+)-regulated actin-binding protein.

Tissue specificity

Major component of microvilli of intestinal epithelial cells and kidney proximal tubule cells.

Sequence similarities

Belongs to the villin/gelsolin family.

Contains 6 gelsolin-like repeats.

Contains 1 HP (headpiece) domain.

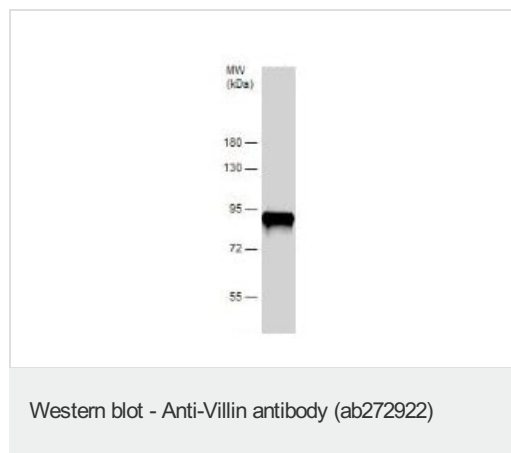
Domain

Consists of a large core fragment, the N-terminal portion, and a small headpiece, the C-terminal portion. The headpiece binds F-actin strongly in both the presence and absence of calcium.

Cellular localization

Cytoplasm > cytoskeleton.

Images

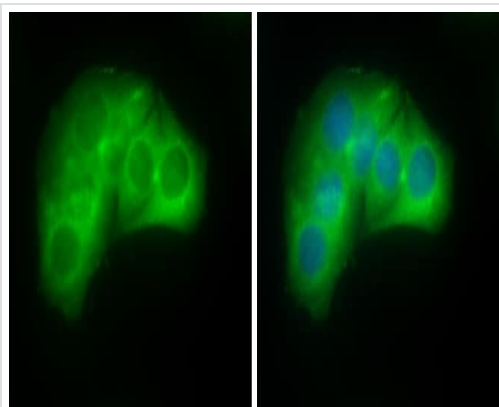


Anti-Villin antibody (ab272922) at 1/1000 dilution + HepG2 (Human liver hepatocellular carcinoma cell line) whole cell extract at 30 µg

Secondary

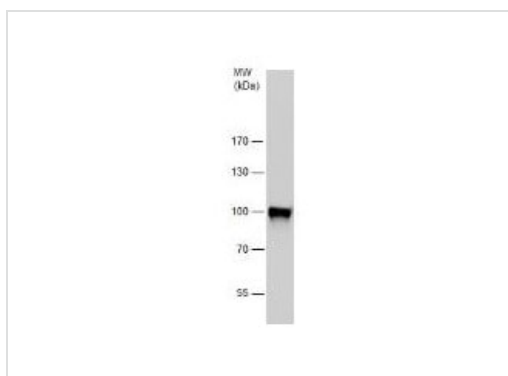
HRP-conjugated anti-rabbit IgG

7.5% SDS-PAGE



Immunocytochemistry/ Immunofluorescence - Anti-Villin antibody (ab272922)

4% PFA-fixed HepG2 (Human liver hepatocellular carcinoma cell line) cells stained for Villin using ab272922 at 1/500 dilution in ICC/IF (green). Blue: DAPI.



Western blot - Anti-Villin antibody (ab272922)

Anti-Villin antibody (ab272922) at 1/1000 dilution + Mouse kidney tissue extract at 50 µg

Secondary

HRP-conjugated anti-rabbit IgG

7.5% SDS-PAGE

Please note: All products are "FOR RESEARCH USE ONLY. NOT FOR USE IN DIAGNOSTIC PROCEDURES"

Our Abpromise to you: Quality guaranteed and expert technical support

- Replacement or refund for products not performing as stated on the datasheet
- Valid for 12 months from date of delivery
- Response to your inquiry within 24 hours
- We provide support in Chinese, English, French, German, Japanese and Spanish
- Extensive multi-media technical resources to help you
- We investigate all quality concerns to ensure our products perform to the highest standards

If the product does not perform as described on this datasheet, we will offer a refund or replacement. For full details of the Abpromise, please visit <https://www.abcam.com/abpromise> or contact our technical team.

Terms and conditions

- Guarantee only valid for products bought direct from Abcam or one of our authorized distributors