

Product datasheet

Anti-Villin antibody [M245] ab86704

[1 Image](#)

Overview

Product name	Anti-Villin antibody [M245]
Description	Mouse monoclonal [M245] to Villin
Host species	Mouse
Tested applications	Suitable for: ELISA, WB
Species reactivity	Reacts with: Mouse, Human Predicted to work with: Rat
Immunogen	Recombinant full length protein (Human)
Positive control	Adult mouse kidney.

Properties

Form	Liquid
Storage instructions	Shipped at 4°C. Store at -20°C. Stable for 12 months at -20°C.
Storage buffer	Preservative: 0.05% Sodium azide Constituents: 0.1% BSA, 50% Glycerol, PBS
Purity	Protein A purified
Clonality	Monoclonal
Clone number	M245
Isotype	IgG1

Applications

Our [Abpromise guarantee](#) covers the use of **ab86704** in the following tested applications.

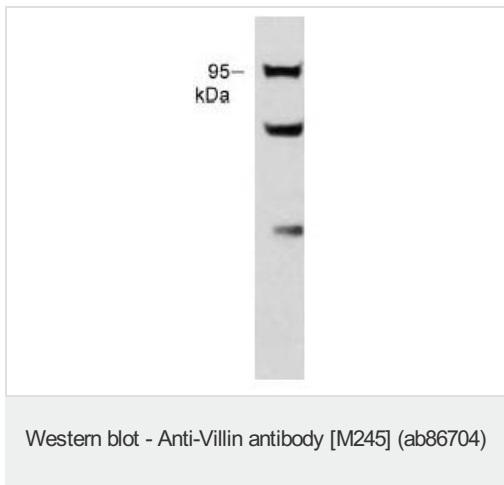
The application notes include recommended starting dilutions; optimal dilutions/concentrations should be determined by the end user.

Application	Abreviews	Notes
ELISA		1/2000.
WB		1/1000. Predicted molecular weight: 93 kDa.

Target

Function	Ca(2+)-regulated actin-binding protein.
Tissue specificity	Major component of microvilli of intestinal epithelial cells and kidney proximal tubule cells.
Sequence similarities	Belongs to the villin/gelsolin family. Contains 6 gelsolin-like repeats. Contains 1 HP (headpiece) domain.
Domain	Consists of a large core fragment, the N-terminal portion, and a small headpiece, the C-terminal portion. The headpiece binds F-actin strongly in both the presence and absence of calcium.
Cellular localization	Cytoplasm > cytoskeleton.

Images



Anti-Villin antibody [M245] (ab86704) at 1/250 dilution + Adult mouse kidney lysate

Predicted band size: 93 kDa

Western blot membranes were incubated with diluted antibody in 5% non-fat milk, PBS, 0.04% Tween 20 for 1 hour at room temperature.

Please note: All products are "FOR RESEARCH USE ONLY. NOT FOR USE IN DIAGNOSTIC PROCEDURES"

Our Abpromise to you: Quality guaranteed and expert technical support

- Replacement or refund for products not performing as stated on the datasheet
- Valid for 12 months from date of delivery
- Response to your inquiry within 24 hours
- We provide support in Chinese, English, French, German, Japanese and Spanish
- Extensive multi-media technical resources to help you
- We investigate all quality concerns to ensure our products perform to the highest standards

If the product does not perform as described on this datasheet, we will offer a refund or replacement. For full details of the Abpromise, please visit <https://www.abcam.com/abpromise> or contact our technical team.

Terms and conditions

- Guarantee only valid for products bought direct from Abcam or one of our authorized distributors