

Product datasheet

violetFluor™ 450 Anti-F4/80 antibody [BM8.1] ab242258

1 Image

Overview

<b>Product name</b>	violetFluor™ 450 Anti-F4/80 antibody [BM8.1]
<b>Description</b>	violetFluor™ 450 Rat monoclonal [BM8.1] to F4/80
<b>Host species</b>	Rat
<b>Conjugation</b>	violetFluor™ 450. Ex: 405nm, Em: 450nm
<b>Tested applications</b>	<b>Suitable for:</b> Flow Cyt
<b>Species reactivity</b>	<b>Reacts with:</b> Mouse
<b>Immunogen</b>	The details of the immunogen for this antibody are not available.
<b>Positive control</b>	Flow Cyt: C57Bl/6 bone marrow cells.
<b>General notes</b>	<p>The Life Science industry has been in the grips of a reproducibility crisis for a number of years. Abcam is leading the way in addressing this with our range of recombinant monoclonal antibodies and knockout edited cell lines for gold-standard validation. Please check that this product meets your needs before purchasing.</p> <p>If you have any questions, special requirements or concerns, please send us an inquiry and/or contact our Support team ahead of purchase. Recommended alternatives for this product can be found below, along with publications, customer reviews and Q&amp;As</p>

Properties

<b>Form</b>	Liquid
<b>Storage instructions</b>	Shipped at 4°C. Store at +4°C. Store In the Dark.
<b>Storage buffer</b>	<p>pH: 7.20</p> <p>Preservative: 0.09% Sodium azide</p> <p>Constituents: 0.12% Monobasic dihydrogen sodium phosphate, 0.87% Sodium chloride, 0.1% Gelatin</p>
<b>Purity</b>	Affinity purified
<b>Purification notes</b>	Purified from TCS.
<b>Clonality</b>	Monoclonal
<b>Clone number</b>	BM8.1
<b>Isotype</b>	IgG2b
<b>Light chain type</b>	kappa

## Applications

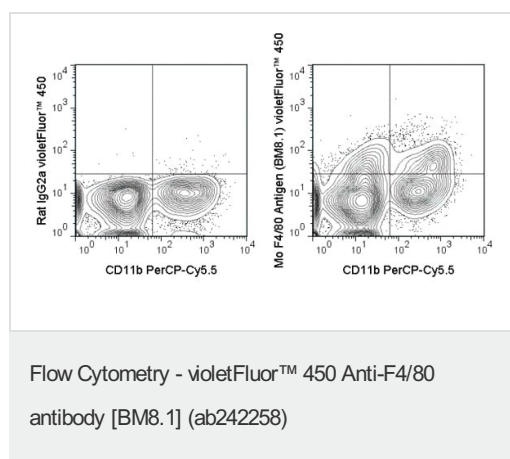
**The Abpromise guarantee** Our [Abpromise guarantee](#) covers the use of ab242258 in the following tested applications. The application notes include recommended starting dilutions; optimal dilutions/concentrations should be determined by the end user.

Application	Abreviews	Notes
Flow Cyt		Use at an assay dependent concentration. We recommend titrating the antibody under your specific conditions to determine the optimal concentration of antibody needed in your experimental system.

## Target

<b>Function</b>	Orphan receptor involved in cell adhesion and probably in cell-cell interactions specifically involving cells of the immune system. May play a role in regulatory T-cells (Treg) development.
<b>Tissue specificity</b>	Expression is restricted to eosinophils.
<b>Sequence similarities</b>	Belongs to the G-protein coupled receptor 2 family. Adhesion G-protein coupled receptor (ADGR) subfamily. Contains 6 EGF-like domains. Contains 1 GPS domain.
<b>Cellular localization</b>	Cell membrane.

## Images



Flow Cytometric analysis of C57Bl/6 bone marrow cells staining F4/80 using PerCP-Cy5.5 Anti-Mouse CD11b and 0.5 µg ab242258 (right panel) or 0.5 µg violet-Fluor™ 450 Rat IgG2b isotype control (left panel).

**Please note:** All products are "FOR RESEARCH USE ONLY. NOT FOR USE IN DIAGNOSTIC PROCEDURES"

## Our Abpromise to you: Quality guaranteed and expert technical support

- Replacement or refund for products not performing as stated on the datasheet
- Valid for 12 months from date of delivery

- Response to your inquiry within 24 hours
- We provide support in Chinese, English, French, German, Japanese and Spanish
- Extensive multi-media technical resources to help you
- We investigate all quality concerns to ensure our products perform to the highest standards

If the product does not perform as described on this datasheet, we will offer a refund or replacement. For full details of the Abpromise, please visit <https://www.abcam.com/abpromise> or contact our technical team.

### **Terms and conditions**

---

- Guarantee only valid for products bought direct from Abcam or one of our authorized distributors