

Product datasheet

violetFluor™ 450 Anti-TCR beta antibody [H57-597]
ab242073

1 Image

Overview

Product name	violetFluor™ 450 Anti-TCR beta antibody [H57-597]
Description	violetFluor™ 450 Armenian hamster monoclonal [H57-597] to TCR beta
Host species	Armenian hamster
Conjugation	violetFluor™ 450. Ex: 405nm, Em: 450nm
Specificity	The antibody does not cross-react with cells expressing the gamma-delta TCR.
Tested applications	Suitable for: Flow Cyt
Species reactivity	Reacts with: Mouse
Immunogen	The details of the immunogen for this antibody are not available.
Positive control	Flow Cyt: C57Bl/6 splenocytes.
General notes	<p>The Life Science industry has been in the grips of a reproducibility crisis for a number of years. Abcam is leading the way in addressing this with our range of recombinant monoclonal antibodies and knockout edited cell lines for gold-standard validation. Please check that this product meets your needs before purchasing.</p> <p>If you have any questions, special requirements or concerns, please send us an inquiry and/or contact our Support team ahead of purchase. Recommended alternatives for this product can be found below, along with publications, customer reviews and Q&As</p>

Properties

Form	Liquid
Storage instructions	Shipped at 4°C. Store at +4°C. Store In the Dark.
Storage buffer	<p>pH: 7.20</p> <p>Preservative: 0.09% Sodium azide</p> <p>Constituents: 0.12% Monobasic dihydrogen sodium phosphate, 0.87% Sodium chloride, 0.1% Gelatin</p>
Purity	Affinity purified
Purification notes	ab242073 was purified from tissue culture supernatant via affinity chromatography.
Clonality	Monoclonal

Clone number H57-597
Isotype IgG

Applications

The Abpromise guarantee Our [Abpromise guarantee](#) covers the use of ab242073 in the following tested applications. The application notes include recommended starting dilutions; optimal dilutions/concentrations should be determined by the end user.

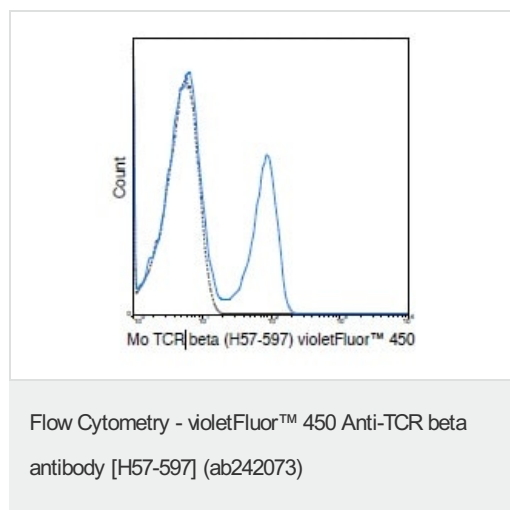
Application	Abreviews	Notes
Flow Cyt		Use at an assay dependent concentration. 0.25 µg: The amount of antibody required for optimal staining of a cell sample should be determined empirically in your system.

Target

Relevance TCR (T cell antigen receptor) recognizes foreign antigens and translates such recognition events into intracellular signals that elicit a change in the cell from a dormant to an activated state. TCR is a heterodimer composed of either alpha and beta or gamma and delta chains. The vast majority of circulating T cells (95%) express the alpha/beta heterodimer while roughly 2-5% express the gamma/delta heterodimer. CD3 chains and the CD4 or CD8 coreceptors are also required for efficient signal transduction through the TCR.

Cellular localization Plasma membrane.

Images



Flow cytometric analysis of C57Bl/6 splenocytes labeling ab242073 (0.25 µg, solid line) compared to a IgG isotype control (Dashed line).

Please note: All products are "FOR RESEARCH USE ONLY. NOT FOR USE IN DIAGNOSTIC PROCEDURES"

Our Abpromise to you: Quality guaranteed and expert technical support

- Replacement or refund for products not performing as stated on the datasheet

- Valid for 12 months from date of delivery
- Response to your inquiry within 24 hours

- We provide support in Chinese, English, French, German, Japanese and Spanish
- Extensive multi-media technical resources to help you
- We investigate all quality concerns to ensure our products perform to the highest standards

If the product does not perform as described on this datasheet, we will offer a refund or replacement. For full details of the Abpromise, please visit <https://www.abcam.com/abpromise> or contact our technical team.

Terms and conditions

- Guarantee only valid for products bought direct from Abcam or one of our authorized distributors