




Product datasheet

Anti-VPS15 antibody ab240914

[2 Images](#)

Overview

Product name	Anti-VPS15 antibody
Description	Rabbit polyclonal to VPS15
Host species	Rabbit
Tested applications	Suitable for: ICC/IF, WB
Species reactivity	Reacts with: Rat, Human Predicted to work with: Mouse, Orangutan 
Immunogen	Synthetic peptide corresponding to Human VPS15 aa 1314-1325 (C terminal). Sequence: DDTPRRGPESLP Database link: Q99570  Run BLAST with  Run BLAST with

General notes

This product was previously labelled as PI 3 Kinase regulatory subunit 4

Reproducibility is key to advancing scientific discovery and accelerating scientists' next breakthrough.

Abcam is leading the way with our range of recombinant antibodies, knockout-validated antibodies and knockout cell lines, all of which support improved reproducibility.

We are also planning to innovate the way in which we present recommended applications and species on our product datasheets, so that only applications & species that have been tested in our own labs, our suppliers or by selected trusted collaborators are covered by our Abpromise™ guarantee.

In preparation for this, we have started to update the applications & species that this product is Abpromise guaranteed for.

We are also updating the applications & species that this product has been “predicted to work with,” however this information is not covered by our Abpromise guarantee.

Applications & species from publications and Abreviews that have not been tested in our own labs or in those of our suppliers are not covered by the Abpromise guarantee.

Please check that this product meets your needs before purchasing. If you have any questions, special requirements or concerns, please send us an inquiry and/or contact our Support team ahead of purchase. Recommended alternatives for this product can be found below, as well as customer reviews and Q&As.

Properties

Form	Liquid
Storage instructions	Shipped at 4°C. Store at +4°C short term (1-2 weeks). Upon delivery aliquot. Store at -20°C long term. Avoid freeze / thaw cycle.
Storage buffer	Preservative: 0.09% Sodium azide Constituents: PBS, 50% Glycerol (glycerin, glycerine)
Purity	Immunogen affinity purified
Clonality	Polyclonal
Isotype	IgG

Applications

Our [Abpromise guarantee](#) covers the use of **ab240914** in the following tested applications.

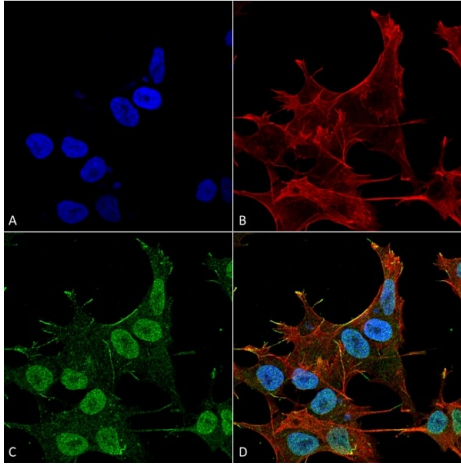
The application notes include recommended starting dilutions; optimal dilutions/concentrations should be determined by the end user.

Application	Abreviews	Notes
ICC/IF		1/100.
WB		1/1000. Predicted molecular weight: 153 kDa.

Target

Function	Regulatory subunit of the PI3K complex. May regulate membrane trafficking late in the endocytic pathway.
Tissue specificity	Ubiquitously expressed.
Sequence similarities	Belongs to the protein kinase superfamily. Ser/Thr protein kinase family. Contains 3 HEAT repeats. Contains 1 protein kinase domain. Contains 7 WD repeats.
Post-translational modifications	Myristoylated. Probably autophosphorylated.

Images

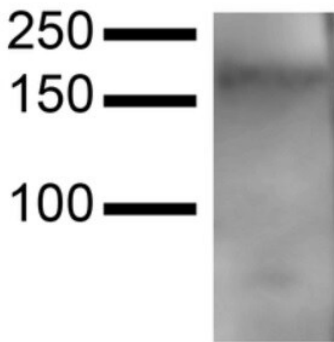


Immunocytochemistry/ Immunofluorescence - Anti-VPS15 antibody (ab240914)

4% formaldehyde-fixed SK-N-BE (human neuroblastoma cell line) cells labeling VPS15 (green) using ab240914 at 1/100 dilution in ICC/IF, followed by a goat anti-rabbit ATTO 488 conjugated secondary antibody at 1/200 dilution. Both primary and secondary antibodies were incubated for 1 hour at RT. Counterstained with Phalloidin Texas Red F-Actin stain (red) at 1/1000 for 1 hour at RT. The nuclear counterstain in DAPI (blue) at 1/5000 for 5 minutes at RT.

- (A) DAPI (blue) nuclear stain
- (B) Phalloidin Texas Red F-Actin stain (red)
- (C) ab240914
- (D) Composite

kDa MW



Western blot - Anti-VPS15 antibody (ab240914)

Anti-VPS15 antibody (ab240914) at 1/1000 dilution + Rat brain lysate at 15 µg

Secondary

HRP-linked goat anti-rabbit IgG at 1/2000 dilution

Developed using the ECL technique.

Predicted band size: 153 kDa

Exposure time: 6 minutes

Blocked with 5% skim milk in 1XTBST.

Primary and secondary incubation: 1 hour at RT.

Please note: All products are "FOR RESEARCH USE ONLY. NOT FOR USE IN DIAGNOSTIC PROCEDURES"

Our Abpromise to you: Quality guaranteed and expert technical support

- Replacement or refund for products not performing as stated on the datasheet

- Valid for 12 months from date of delivery
- Response to your inquiry within 24 hours

- We provide support in Chinese, English, French, German, Japanese and Spanish
- Extensive multi-media technical resources to help you
- We investigate all quality concerns to ensure our products perform to the highest standards

If the product does not perform as described on this datasheet, we will offer a refund or replacement. For full details of the Abpromise, please visit <https://www.abcam.com/abpromise> or contact our technical team.

Terms and conditions

- Guarantee only valid for products bought direct from Abcam or one of our authorized distributors