




Product datasheet

Anti-VPS26 antibody [CL2287] - C-terminal ab211530

11 Images

Overview

<b>Product name</b>	Anti-VPS26 antibody [CL2287] - C-terminal
<b>Description</b>	Mouse monoclonal [CL2287] to VPS26 - C-terminal
<b>Host species</b>	Mouse
<b>Tested applications</b>	<b>Suitable for:</b> WB, ICC/IF, IHC-P
<b>Species reactivity</b>	<b>Reacts with:</b> Human <b>Predicted to work with:</b> Mouse, Rat, Cow 
<b>Immunogen</b>	Recombinant fragment corresponding to Human VPS26 aa 302-327 (C terminal). Sequence: LRKQRTNHFHQRFESPESQASAEQPEM  Database link: <a href="#">O75436</a>   <a href="#">Run BLAST with</a>  <a href="#">Run BLAST with</a>
<b>Positive control</b>	U251 MG cell line lysate; Human fallopian tube, small intestine, testis, and kidney tissues; HeLa , A431 , MCF7, U2OS and U251 cells.

Properties

<b>Form</b>	Liquid
<b>Storage instructions</b>	Shipped at 4°C. Store at +4°C short term (1-2 weeks). Upon delivery aliquot. Store at -20°C long term. Avoid freeze / thaw cycle.
<b>Storage buffer</b>	pH: 7.2 Preservative: 0.02% Sodium azide Constituents: 40% Glycerol, 59% PBS
<b>Purity</b>	Protein A purified
<b>Clonality</b>	Monoclonal
<b>Clone number</b>	CL2287
<b>Isotype</b>	IgG1

Applications

Our [Abpromise guarantee](#) covers the use of **ab211530** in the following tested applications.

The application notes include recommended starting dilutions; optimal dilutions/concentrations should be determined by the end user.

Application	Abreviews	Notes
WB		1/200 - 1/500. Predicted molecular weight: 38 kDa.
ICC/IF		Use a concentration of 1 - 4 µg/ml. Fixation/Permeabilization: PFA/Triton X-100
IHC-P		1/200 - 1/500. Perform heat mediated antigen retrieval with citrate buffer pH 6 before commencing with IHC staining protocol.

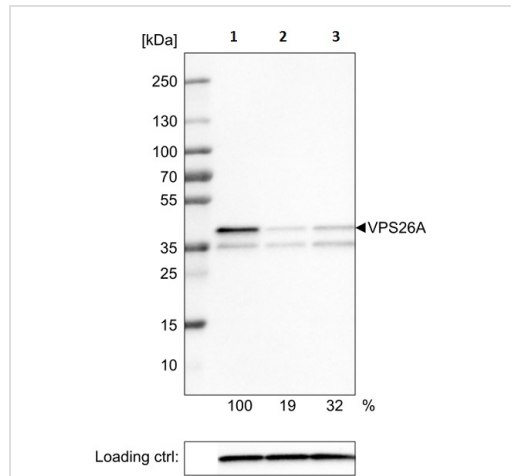
## Target

**Function** Essential component of the retromer complex, a complex required to retrieve lysosomal enzyme receptors (IGF2R and M6PR) from endosomes to the trans-Golgi network. Also required to regulate transcytosis of the polymeric immunoglobulin receptor (pIgR-pIgA).

**Sequence similarities** Belongs to the VPS26 family.

**Cellular localization** Cytoplasm. Endosome membrane.

## Images



Western blot - Anti-VPS26 antibody [CL2287] - C-terminal (ab211530)

**All lanes :** Anti-VPS26 antibody [CL2287] - C-terminal (ab211530)

**Lane 1 :** U-251 cells, transfected with control siRNA

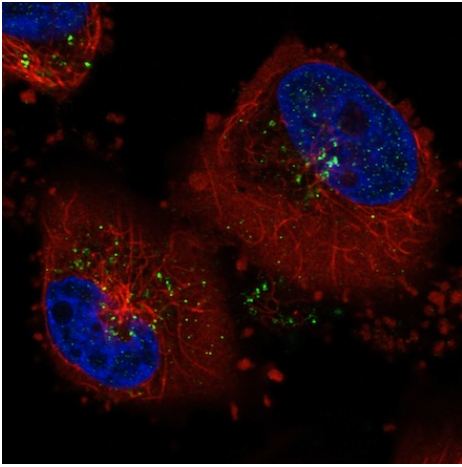
**Lane 2 :** U-251 cells, transfected with target specific siRNA probe #1

**Lane 3 :** U-251 cells, transfected with target specific siRNA probe #2

**Predicted band size:** 38 kDa

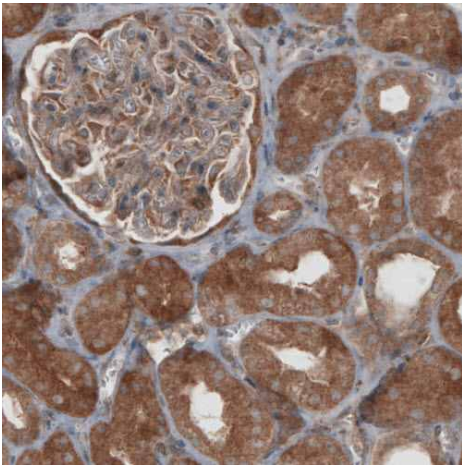
Downregulation of antibody signal confirms target specificity.

Remaining % intensity, relative control lane, is indicated. Anti-PPIB monoclonal antibody was used as loading control.



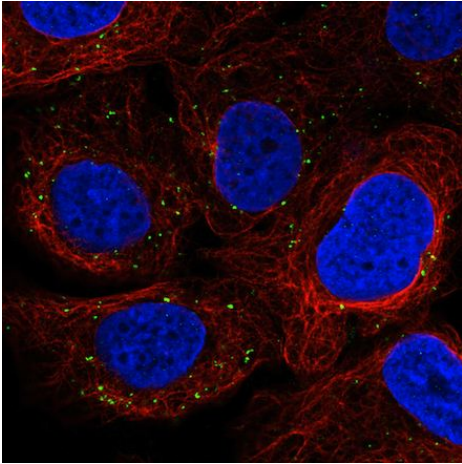
Immunofluorescent analysis of U251 cells (PFA-fixed/Triton X-100 permeabilized) labeling VPS26 with ab211530 at 4 µg/ml dilution (green). Microtubule- and nuclear probes are visualized in red and blue respectively.

Immunocytochemistry/ Immunofluorescence - Anti-VPS26 antibody [CL2287] - C-terminal (ab211530)



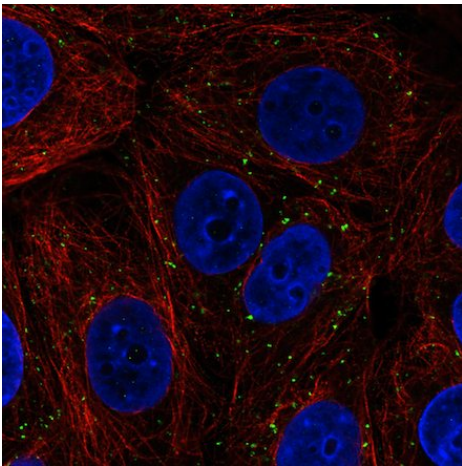
Immunohistochemical analysis of paraffin-embedded Human kidney tissue labeling VPS26 with ab211530 at 1/200 dilution.

Immunohistochemistry (Formalin/PFA-fixed paraffin-embedded sections) - Anti-VPS26 antibody [CL2287] - C-terminal (ab211530)



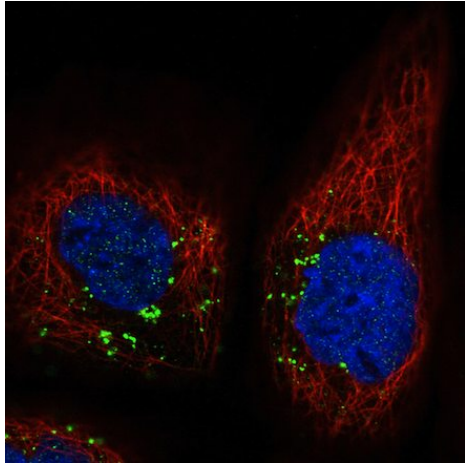
Immunocytochemistry/ Immunofluorescence - Anti-VPS26 antibody [CL2287] - C-terminal (ab211530)

Immunofluorescent analysis of U2OS cells (PFA-fixed/Triton X-100 permeabilized) labeling VPS26 with ab211530 at 4  $\mu\text{g/ml}$  dilution (green). Microtubule- and nuclear probes are visualized in red and blue respectively.



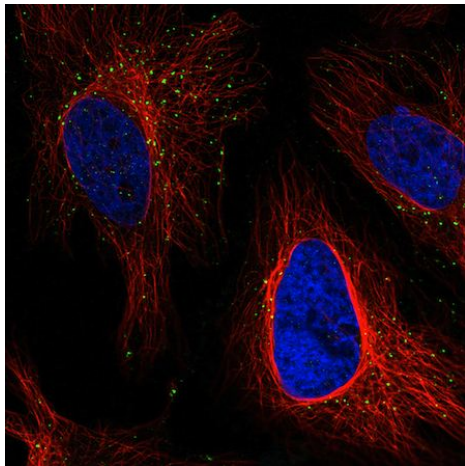
Immunocytochemistry/ Immunofluorescence - Anti-VPS26 antibody [CL2287] - C-terminal (ab211530)

Immunofluorescent analysis of MCF7 cells (PFA-fixed/Triton X-100 permeabilized) labeling VPS26 with ab211530 at 4  $\mu\text{g/ml}$  dilution (green). Microtubule- and nuclear probes are visualized in red and blue respectively.



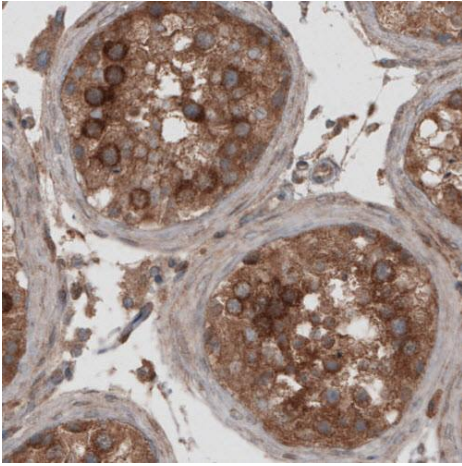
Immunocytochemistry/ Immunofluorescence - Anti-VPS26 antibody [CL2287] - C-terminal (ab211530)

Immunofluorescent analysis of A431 cells (PFA-fixed/Triton X-100 permeabilized) labeling VPS26 with ab211530 at 4  $\mu\text{g/ml}$  dilution (green). Microtubule- and nuclear probes are visualized in red and blue respectively.



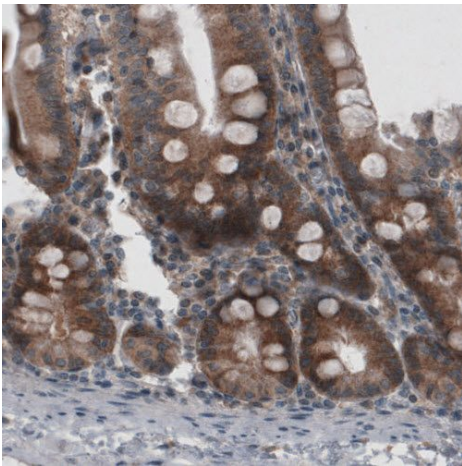
Immunocytochemistry/ Immunofluorescence - Anti-VPS26 antibody [CL2287] - C-terminal (ab211530)

Immunofluorescent analysis of HeLa cells (PFA-fixed/Triton X-100 permeabilized) labeling VPS26 with ab211530 at 4  $\mu\text{g/ml}$  dilution (green). Microtubule- and nuclear probes are visualized in red and blue respectively.



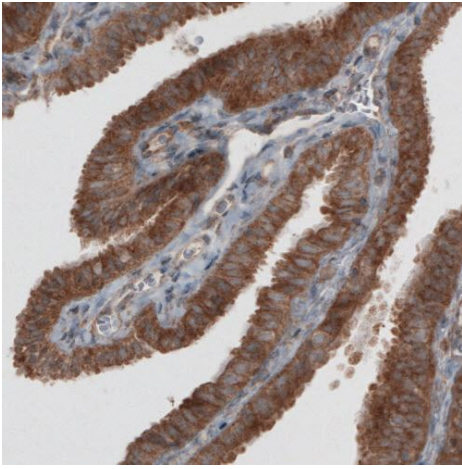
Immunohistochemical analysis of paraffin-embedded Human testis tissue labeling VPS26 with ab211530 at 1/200 dilution.

Immunohistochemistry (Formalin/PFA-fixed paraffin-embedded sections) - Anti-VPS26 antibody [CL2287] - C-terminal (ab211530)



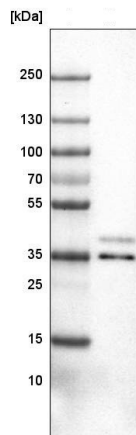
Immunohistochemical analysis of paraffin-embedded Human small intestine tissue labeling VPS26 with ab211530 at 1/200 dilution.

Immunohistochemistry (Formalin/PFA-fixed paraffin-embedded sections) - Anti-VPS26 antibody [CL2287] - C-terminal (ab211530)



Immunohistochemical analysis of paraffin-embedded Human fallopian tube tissue labeling VPS26 with ab211530 at 1/200 dilution.

Immunohistochemistry (Formalin/PFA-fixed paraffin-embedded sections) - Anti-VPS26 antibody [CL2287] - C-terminal (ab211530)



Anti-VPS26 antibody [CL2287] - C-terminal (ab211530) at 1/200 dilution + U251 MG cell line lysate

**Predicted band size: 38 kDa**

Western blot - Anti-VPS26 antibody [CL2287] - C-terminal (ab211530)

**Please note:** All products are "FOR RESEARCH USE ONLY. NOT FOR USE IN DIAGNOSTIC PROCEDURES"

### Our Abpromise to you: Quality guaranteed and expert technical support

- Replacement or refund for products not performing as stated on the datasheet
- Valid for 12 months from date of delivery
- Response to your inquiry within 24 hours
- We provide support in Chinese, English, French, German, Japanese and Spanish

- Extensive multi-media technical resources to help you
- We investigate all quality concerns to ensure our products perform to the highest standards

If the product does not perform as described on this datasheet, we will offer a refund or replacement. For full details of the Abpromise, please visit <https://www.abcam.com/abpromise> or contact our technical team.

### **Terms and conditions**

---

- Guarantee only valid for products bought direct from Abcam or one of our authorized distributors