


## Product datasheet

# Anti-WDR1 antibody ab244541

2 Images

### Overview

|                            |   |
|----------------------------|---|
| <b>Product name</b>        | Anti-WDR1 antibody  |
| <b>Description</b>         | Rabbit polyclonal to WDR1   |
| <b>Host species</b>        | Rabbit  |
| <b>Tested applications</b> | <b>Suitable for:</b> WB, ICC/IF   |
| <b>Species reactivity</b>  | <b>Reacts with:</b> Human<br><b>Predicted to work with:</b> Mouse, Rat, Cow    |
| <b>Immunogen</b>           | Recombinant fragment corresponding to Human WDR1 aa 405-477.<br>Sequence:<br>KLDVQPKCVAVGPGGYAVVVCIGQMLLKDQRKCFSIDNP<br>GYEPEVVAVH PGGDTVAIGGVDGNVRLYSILGT<br><br>Database link: <a href="#">O75083</a><br><a href="#">Run BLAST with</a> <a href="#">Run BLAST with</a>  |
| <b>Positive control</b>    | ICC/IF: U-2 OS cells. WB: RT4 and U-251 MG cell lysates.  |
| <b>General notes</b>       | <p>Reproducibility is key to advancing scientific discovery and accelerating scientists' next breakthrough.</p> <p>Abcam is leading the way with our range of recombinant antibodies, knockout-validated antibodies and knockout cell lines, all of which support improved reproducibility.</p> <p>We are also planning to innovate the way in which we present recommended applications and species on our product datasheets, so that only applications &amp; species that have been tested in our own labs, our suppliers or by selected trusted collaborators are covered by our Abpromise™ guarantee.</p> <p>In preparation for this, we have started to update the applications &amp; species that this product is Abpromise guaranteed for.</p> <p>We are also updating the applications &amp; species that this product has been “predicted to work with,” however this information is not covered by our Abpromise guarantee.</p> <p>Applications &amp; species from publications and Abreviews that have not been tested in our own labs or in those of our suppliers are not covered by the Abpromise guarantee.</p> <p>Please check that this product meets your needs before purchasing. If you have any questions, special requirements or concerns, please send us an inquiry and/or contact our Support team ahead of purchase. Recommended alternatives for this product can be found below, as well as customer reviews and Q&amp;As.</p> |

## Properties

---

|                             |   |
|-----------------------------|---|
| <b>Form</b>                 | Liquid  |
| <b>Storage instructions</b> | Shipped at 4°C. Store at +4°C short term (1-2 weeks). Upon delivery aliquot. Store at -20°C long term. Avoid freeze / thaw cycle. |
| <b>Storage buffer</b>       | pH: 7.20<br>Preservative: 0.02% Sodium azide<br>Constituents: PBS, 40% Glycerol (glycerin, glycerine)                             |
| <b>Purity</b>               | Immunogen affinity purified   |
| <b>Clonality</b>            | Polyclonal  |
| <b>Isotype</b>              | IgG   |

## Applications

---

Our [Abpromise guarantee](#) covers the use of **ab244541** in the following tested applications.

The application notes include recommended starting dilutions; optimal dilutions/concentrations should be determined by the end user.

| Application | Abreviews | Notes  |
|-------------|-----------|--|
| WB          |           | Use a concentration of 0.04 - 0.4 µg/ml. Predicted molecular weight: 66 kDa.           |
| ICC/IF      |           | Use a concentration of 0.25 - 2 µg/ml.<br>Fixation/Permeabilization: PFA/Triton X-100. |

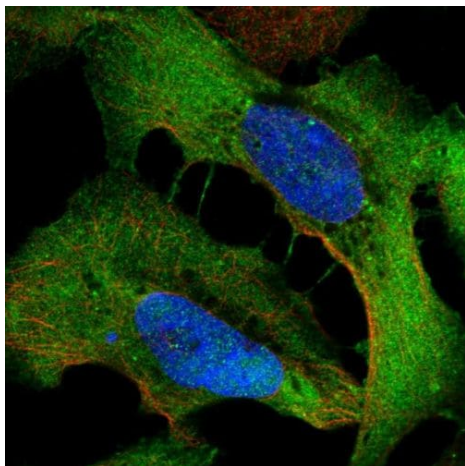
---

## Target

---

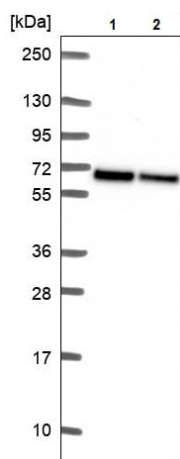
## Images

---



Immunocytochemistry/ Immunofluorescence - Anti-WDR1 antibody (ab244541)

PFA-fixed, Triton X-100 permeabilized U-2 OS (human bone osteosarcoma epithelial cell line) cells stained for WDR1 (green) using ab244541 at 4 µg/ml in ICC/IF.



Western blot - Anti-WDR1 antibody (ab244541)

**All lanes :** Anti-WDR1 antibody (ab244541) at 0.4 µg/ml

**Lane 1 :** RT4 (human urinary bladder cancer cell line) cell lysate

**Lane 2 :** U-251 MG (human brain glioma cell line) cell lysate

**Predicted band size:** 66 kDa

**Please note:** All products are "FOR RESEARCH USE ONLY. NOT FOR USE IN DIAGNOSTIC PROCEDURES"

### Our Abpromise to you: Quality guaranteed and expert technical support

- Replacement or refund for products not performing as stated on the datasheet
- Valid for 12 months from date of delivery
- Response to your inquiry within 24 hours
- We provide support in Chinese, English, French, German, Japanese and Spanish
- Extensive multi-media technical resources to help you
- We investigate all quality concerns to ensure our products perform to the highest standards

If the product does not perform as described on this datasheet, we will offer a refund or replacement. For full details of the Abpromise, please visit <https://www.abcam.com/abpromise> or contact our technical team.

## Terms and conditions

---

- Guarantee only valid for products bought direct from Abcam or one of our authorized distributors