


Product datasheet

Anti-WDR1 antibody - C-terminal ab228738

4 Images

Overview

<b>Product name</b>	Anti-WDR1 antibody - C-terminal
<b>Description</b>	Rabbit polyclonal to WDR1 - C-terminal
<b>Host species</b>	Rabbit
<b>Tested applications</b>	<b>Suitable for:</b> WB, IHC-P
<b>Species reactivity</b>	<b>Reacts with:</b> Mouse, Human <b>Predicted to work with:</b> Rat, Guinea pig, Cow, Dog, Chimpanzee 
<b>Immunogen</b>	Recombinant fragment within Human WDR1 (C terminal). The exact sequence is proprietary. Database link: <a href="#">O75083</a>
<b>Positive control</b>	WB: Raji whole cell lysate; Mouse brain tissue extract. IHC-P: U87 xenograft tissue; Mouse liver tissue.

Properties

<b>Form</b>	Liquid
<b>Storage instructions</b>	Shipped at 4°C. Store at +4°C short term (1-2 weeks). Upon delivery aliquot. Store at -20°C long term. Avoid freeze / thaw cycle.
<b>Storage buffer</b>	pH: 7.00 Preservative: 0.01% Thimerosal (merthiolate) Constituents: 1.21% Tris, 0.75% Glycine, 20% Glycerol
<b>Purity</b>	Immunogen affinity purified
<b>Clonality</b>	Polyclonal
<b>Isotype</b>	IgG

Applications

Our [Abpromise guarantee](#) covers the use of **ab228738** in the following tested applications.

The application notes include recommended starting dilutions; optimal dilutions/concentrations should be determined by the end user.

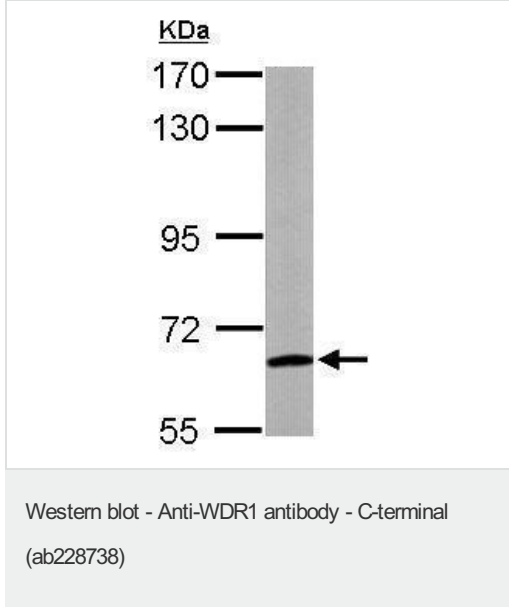
Application	Abreviews	Notes
WB		1/500 - 1/5000. Predicted molecular weight: 66 kDa.

Application	Abreviews	Notes
-------------	-----------	-------

IHC-P 1/100 - 1/1000.

**Target**

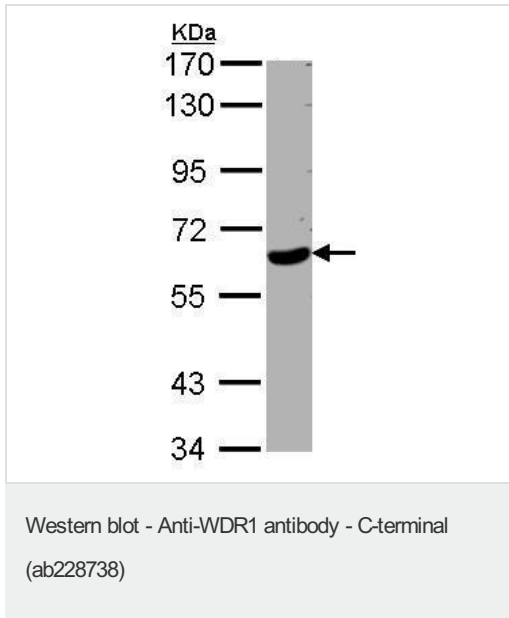
**Images**



Anti-WDR1 antibody - C-terminal (ab228738) at 1/5000 dilution +  
 Mouse brain lysate at 50 µg

**Predicted band size:** 66 kDa

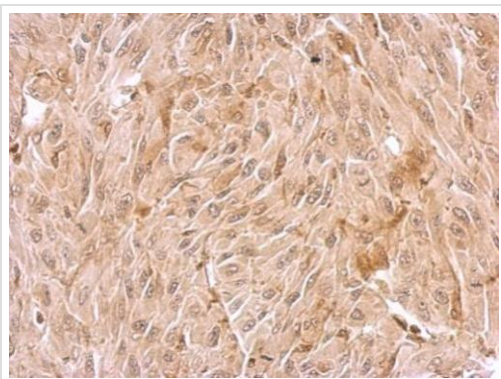
7.5% SDS-PAGE gel.



Anti-WDR1 antibody - C-terminal (ab228738) at 1/500 dilution +  
 Raji (human Burkitt's lymphoma cell line) whole cell lysate at 30 µg

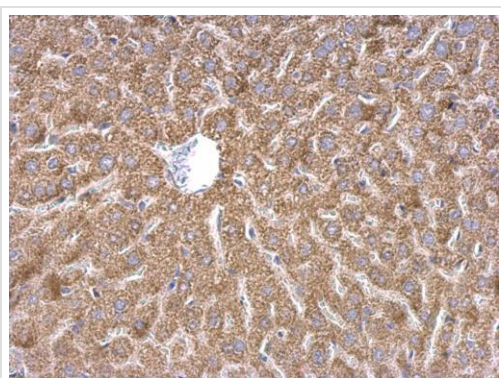
**Predicted band size:** 66 kDa

7.5% SDS-PAGE gel.



Paraffin-embedded U87 xenograft tissue stained for WDR1 using ab228738 at 1/500 dilution in immunohistochemical analysis.

Immunohistochemistry (Formalin/PFA-fixed paraffin-embedded sections) - Anti-WDR1 antibody - C-terminal (ab228738)



Paraffin-embedded mouse liver tissue stained for WDR1 using ab228738 at 1/500 dilution in immunohistochemical analysis.

Immunohistochemistry (Formalin/PFA-fixed paraffin-embedded sections) - Anti-WDR1 antibody - C-terminal (ab228738)

**Please note:** All products are "FOR RESEARCH USE ONLY. NOT FOR USE IN DIAGNOSTIC PROCEDURES"

### Our Abpromise to you: Quality guaranteed and expert technical support

---

- Replacement or refund for products not performing as stated on the datasheet
- Valid for 12 months from date of delivery
- Response to your inquiry within 24 hours
  
- We provide support in Chinese, English, French, German, Japanese and Spanish
- Extensive multi-media technical resources to help you
- We investigate all quality concerns to ensure our products perform to the highest standards

If the product does not perform as described on this datasheet, we will offer a refund or replacement. For full details of the Abpromise,

please visit <https://www.abcam.com/abpromise> or contact our technical team.

## **Terms and conditions**

---

- Guarantee only valid for products bought direct from Abcam or one of our authorized distributors