


Product datasheet

Anti-WDR35 antibody ab105557

1 Abreviews 1 Image

Overview

Product name	Anti-WDR35 antibody
Description	Rabbit polyclonal to WDR35
Host species	Rabbit
Tested applications	Suitable for: WB
Species reactivity	Reacts with: Human Predicted to work with: Mouse, Rat, Rabbit, Horse, Chicken, Guinea pig, Cat, Dog, Zebrafish 
Immunogen	Synthetic peptide corresponding to a region within N terminal amino acids 71 - 120 (SGSVQVVTWN EQYQKLTTS D ENGLIIVWML YKGSWIEEMI NNRNKS VVRS) of Human WDR35 isoform 2 (NP_065830). Run BLAST with ExPASy Run BLAST with NCBI
Positive control	Human fetal lung lysate

Properties

Form	Liquid
Storage instructions	Shipped at 4°C. Upon delivery aliquot and store at -20°C. Avoid repeated freeze / thaw cycles.
Storage buffer	Preservative: 0.09% Sodium azide Constituents: 2% Sucrose, PBS
Purity	Immunogen affinity purified
Clonality	Polyclonal
Isotype	IgG

Applications

Our [Abpromise guarantee](#) covers the use of **ab105557** in the following tested applications.

The application notes include recommended starting dilutions; optimal dilutions/concentrations should be determined by the end user.

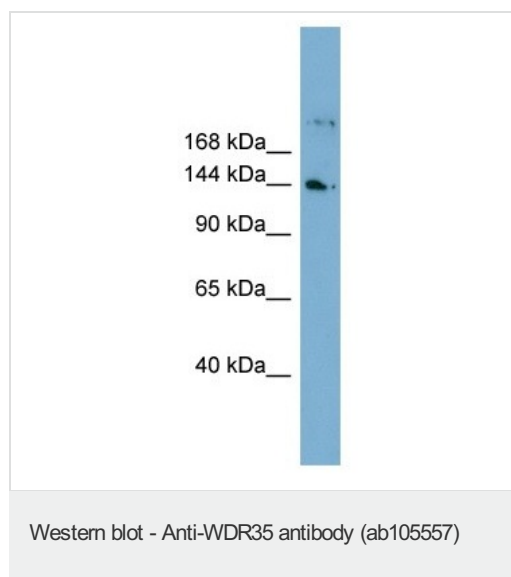
Application	Abreviews	Notes
-------------	-----------	-------

Application	Abreviews	Notes
WB		Use a concentration of 1 µg/ml. Predicted molecular weight: 132 kDa. Good results were obtained when blocked with 5% non-fat dry milk in 0.05% PBS-T.

Target

Function	May promote CASP3 activation and TNF-stimulated apoptosis.
Involvement in disease	Defects in WDR35 are the cause of cranioectodermal dysplasia type 2 (CED2) [MIM:613610]. A disorder characterized by craniofacial, skeletal and ectodermal abnormalities. Clinical features include short stature, dolichocephaly, craniosynostosis, narrow thorax with pectus excavatum, short limbs, brachydactyly, joint laxity, narrow palpebral fissures, telecanthus with hypertelorism, low-set simple ears, everted lower lip, and short neck. Teeth abnormalities included widely spaced, hypoplastic and fused teeth.
Sequence similarities	Contains 5 WD repeats.

Images



Anti-WDR35 antibody (ab105557) at 1 µg/ml + Human fetal lung lysate at 10 µg

Predicted band size: 132 kDa

Gel concentration: 6-18%

Please note: All products are "FOR RESEARCH USE ONLY. NOT FOR USE IN DIAGNOSTIC PROCEDURES"

Our Abpromise to you: Quality guaranteed and expert technical support

- Replacement or refund for products not performing as stated on the datasheet
- Valid for 12 months from date of delivery
- Response to your inquiry within 24 hours
- We provide support in Chinese, English, French, German, Japanese and Spanish
- Extensive multi-media technical resources to help you
- We investigate all quality concerns to ensure our products perform to the highest standards

If the product does not perform as described on this datasheet, we will offer a refund or replacement. For full details of the Abpromise, please visit <https://www.abcam.com/abpromise> or contact our technical team.

Terms and conditions

- Guarantee only valid for products bought direct from Abcam or one of our authorized distributors