




Product datasheet

Anti-WDR42A antibody ab222831

3 Images

Overview

| | |
|----------------------------|--|
| Product name | Anti-WDR42A antibody |
| Description | Rabbit polyclonal to WDR42A |
| Host species | Rabbit |
| Tested applications | Suitable for: WB, IHC-P |
| Species reactivity | Reacts with: Mouse, Human Predicted to work with: Orangutan  |
| Immunogen | Recombinant fragment corresponding to Human WDR42A aa 1-135. Sequence: MSSKGSSTDGRTDLANGSLSSSPEEMSGAEEGRETSSGI EVEASDL SLSL TGDDGGPNRTSTESRGTDTESGDKDSDSMEDTGHYSI NDENRVHDRSE EEEEEEEEEEEEQP RRRVQRKRANRDQDSSDDERA Database link: Q5TAQ9  Run BLAST with  Run BLAST with |

Positive control WB: Mouse heart and lung tissue lysates. IHC-P: Human prostate and endometrial cancer tissue.

General notes

Reproducibility is key to advancing scientific discovery and accelerating scientists' next breakthrough.

Abcam is leading the way with our range of recombinant antibodies, knockout-validated antibodies and knockout cell lines, all of which support improved reproducibility.

We are also planning to innovate the way in which we present recommended applications and species on our product datasheets, so that only applications & species that have been tested in our own labs, our suppliers or by selected trusted collaborators are covered by our Abpromise™ guarantee.

In preparation for this, we have started to update the applications & species that this product is Abpromise guaranteed for.

We are also updating the applications & species that this product has been “predicted to work with,” however this information is not covered by our Abpromise guarantee.

Applications & species from publications and Abreviews that have not been tested in our own labs or in those of our suppliers are not covered by the Abpromise guarantee.

Please check that this product meets your needs before purchasing. If you have any questions,

special requirements or concerns, please send us an inquiry and/or contact our Support team ahead of purchase. Recommended alternatives for this product can be found below, as well as customer reviews and Q&As.

Properties

| | |
|-----------------------------|---|
| Form | Liquid |
| Storage instructions | Shipped at 4°C. Store at +4°C short term (1-2 weeks). Upon delivery aliquot. Store at -20°C long term. Avoid freeze / thaw cycle. |
| Storage buffer | pH: 7.40 Constituents: 50% Glycerol (glycerin, glycerine), PBS, 0.03% Proclin 300 |
| Purity | Protein G purified |
| Purification notes | >95% |
| Clonality | Polyclonal |
| Isotype | IgG |

Applications

Our [Abpromise guarantee](#) covers the use of **ab222831** in the following tested applications.

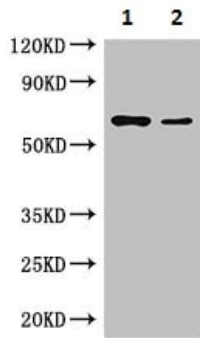
The application notes include recommended starting dilutions; optimal dilutions/concentrations should be determined by the end user.

| Application | Abreviews | Notes |
|-------------|-----------|--|
| WB | | 1/2000 - 1/5000. Detects a band of approximately 67 kDa (predicted molecular weight: 31,67 kDa). |
| IHC-P | | 1/20 - 1/200. |

Target

| | |
|------------------|--|
| Relevance | This gene encodes a WD repeat-containing protein that interacts with the Cul4-Ddb1 E3 ligase macromolecular complex. May function as a substrate receptor for CUL4-DDB1 E3 ubiquitin-protein ligase complex. The protein contains 7 WD repeats. There are two isoforms produced by alternative splicing. |
|------------------|--|

Images



Western blot - Anti-WDR42A antibody (ab222831)

All lanes : Anti-WDR42A antibody (ab222831) at 1/2000 dilution

Lane 1 : Mouse heart tissue lysate

Lane 2 : Mouse liver tissue lysate

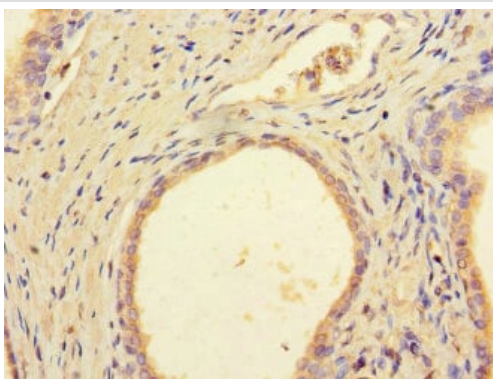
Secondary

All lanes : Goat Anti-Rabbit IgG at 1/50000 dilution

Predicted band size: 31,67 kDa

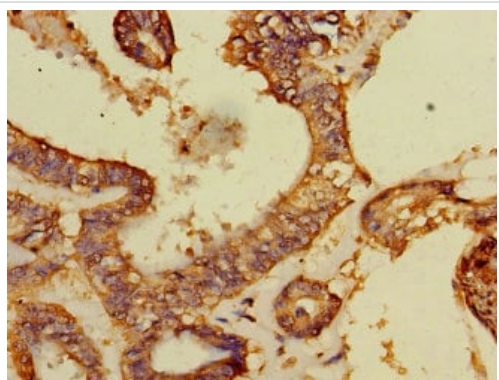
Observed band size: 67 kDa

[why is the actual band size different from the predicted?](#)



Immunohistochemistry (Formalin/PFA-fixed paraffin-embedded sections) - Anti-WDR42A antibody (ab222831)

Paraffin-embedded human prostate cancer tissue stained for WDR42A using ab222831 at 1/100 dilution in immunohistochemical analysis.



Paraffin-embedded human endometrial cancer tissue stained for WDR42A using ab222831 at 1/100 dilution in immunohistochemical analysis.

Immunohistochemistry (Formalin/PFA-fixed paraffin-embedded sections) - Anti-WDR42A antibody (ab222831)

Please note: All products are "FOR RESEARCH USE ONLY. NOT FOR USE IN DIAGNOSTIC PROCEDURES"

Our Abpromise to you: Quality guaranteed and expert technical support

- Replacement or refund for products not performing as stated on the datasheet
- Valid for 12 months from date of delivery
- Response to your inquiry within 24 hours
- We provide support in Chinese, English, French, German, Japanese and Spanish
- Extensive multi-media technical resources to help you
- We investigate all quality concerns to ensure our products perform to the highest standards

If the product does not perform as described on this datasheet, we will offer a refund or replacement. For full details of the Abpromise, please visit <https://www.abcam.com/abpromise> or contact our technical team.

Terms and conditions

- Guarantee only valid for products bought direct from Abcam or one of our authorized distributors