

Product datasheet

Anti-WDR45 antibody ab240905

2 Images

Overview

---

<b>Product name</b>	Anti-WDR45 antibody
<b>Description</b>	Rabbit polyclonal to WDR45
<b>Host species</b>	Rabbit
<b>Tested applications</b>	<b>Suitable for:</b> WB, ICC/IF
<b>Species reactivity</b>	<b>Reacts with:</b> Human
<b>Immunogen</b>	Synthetic peptide corresponding to Human WDR45 aa 312-322 (C terminal). Database link: <a href="#">Q9Y484</a>
<b>Positive control</b>	ICC/IF: HeLa cells. WB: HEK-293Trap and HeLa cell lysats.
<b>General notes</b>	<p>Reproducibility is key to advancing scientific discovery and accelerating scientists' next breakthrough.</p> <p>Abcam is leading the way with our range of recombinant antibodies, knockout-validated antibodies and knockout cell lines, all of which support improved reproducibility.</p> <p>We are also planning to innovate the way in which we present recommended applications and species on our product datasheets, so that only applications &amp; species that have been tested in our own labs, our suppliers or by selected trusted collaborators are covered by our Abpromise™ guarantee.</p> <p>In preparation for this, we have started to update the applications &amp; species that this product is Abpromise guaranteed for.</p> <p>We are also updating the applications &amp; species that this product has been “predicted to work with,” however this information is not covered by our Abpromise guarantee.</p> <p>Applications &amp; species from publications and Abreviews that have not been tested in our own labs or in those of our suppliers are not covered by the Abpromise guarantee.</p> <p>Please check that this product meets your needs before purchasing. If you have any questions, special requirements or concerns, please send us an inquiry and/or contact our Support team ahead of purchase. Recommended alternatives for this product can be found below, as well as customer reviews and Q&amp;As.</p>

Properties

---

<b>Form</b>	Liquid
<b>Storage instructions</b>	Shipped at 4°C. Store at +4°C short term (1-2 weeks). Upon delivery aliquot. Store at -20°C long

term. Avoid freeze / thaw cycle.

**Storage buffer**

Preservative: 0.09% Sodium azide  
Constituents: PBS, 50% Glycerol (glycerin, glycerine)

**Purity**

Immunogen affinity purified

**Clonality**

Polyclonal

**Isotype**

IgG

**Applications**

Our [Abpromise guarantee](#) covers the use of **ab240905** in the following tested applications.

The application notes include recommended starting dilutions; optimal dilutions/concentrations should be determined by the end user.

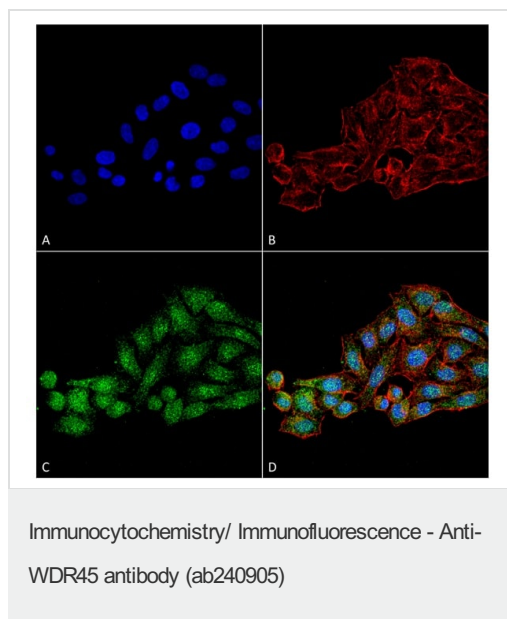
Application	Abreviews	Notes
WB		1/1000.
ICC/IF		1/100.

**Target**

**Relevance**

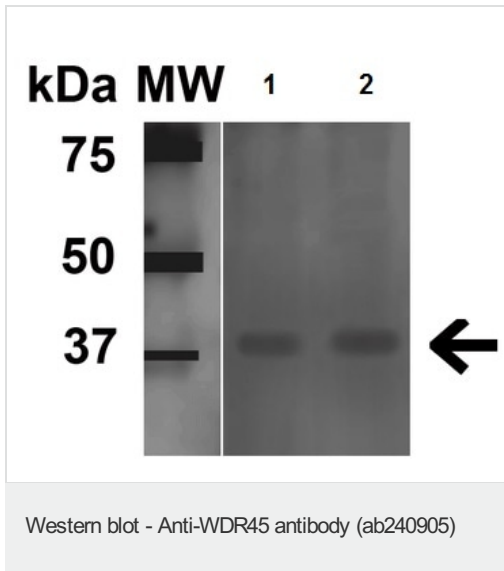
WDR45 is a member of the WD repeat protein family. WD repeat proteins are involved in a variety of cellular processes, including cell cycle progression, signal transduction, apoptosis, and gene regulation. This gene has a pseudogene at chromosome 4q31.3. Multiple alternatively spliced transcript variants encoding distinct isoforms have been found for this gene, but the biological validity and full-length nature of some variants have not been determined.

**Images**



4% Formaldehyde-fixed HeLa (human epithelial cell line from cervix adenocarcinoma) cells stained for WDR45 (Green) using ab240905 at 1/100 dilution for 60 minutes at RT. Anti-Rabbit ATTO 488 at 1:200 dilution was used as the secondary antibody for 60 minutes at RT. Phalloidin Texas Red F-Actin stain was used as the counterstain at 1/1000 dilution for 60 minutes at RT. The nuclear counterstain was DAPI (Blue) for 5 minutes at RT. Localization: Cytoplasm . Magnification: 60X.

A: DAPI, B: Actin, C: WDR45, D: Composite.



**All lanes** : Anti-WDR45 antibody (ab240905) at 1/1000 dilution (1 hour at RT)

**Lane 1** : HeLa whole cell lysate

**Lane 2** : HEK-293Trap whole cell lysate

Lysates/proteins at 15 µg per lane.

**Secondary**

**All lanes** : Goat Anti-Rabbit HRP at 1:2000 for 60 min at RT

Developed using the ECL technique.

**Exposure time:** 6 minutes

Block: 5% Skim Milk in 1X TBST.

**Please note:** All products are "FOR RESEARCH USE ONLY. NOT FOR USE IN DIAGNOSTIC PROCEDURES"

### Our Abpromise to you: Quality guaranteed and expert technical support

- Replacement or refund for products not performing as stated on the datasheet
- Valid for 12 months from date of delivery
- Response to your inquiry within 24 hours
- We provide support in Chinese, English, French, German, Japanese and Spanish
- Extensive multi-media technical resources to help you
- We investigate all quality concerns to ensure our products perform to the highest standards

If the product does not perform as described on this datasheet, we will offer a refund or replacement. For full details of the Abpromise, please visit <https://www.abcam.com/abpromise> or contact our technical team.

### Terms and conditions

- Guarantee only valid for products bought direct from Abcam or one of our authorized distributors